

## LUBRICATION ADAPTORS – CONTINUED

### FEATURES / BENEFITS

- Suitable for oil & grease applications

### SPECIFICATIONS

Max. working pressure	100 bar
Material	Zinc nickel coated or brass (see table below)

### STRAIGHT EXTENSION ADAPTOR ZINC NICKEL COATED



7900

PART NUMBER	MALE THREAD	FEMALE THREAD	OVERALL LENGTH
LU-1900	M6 x 1	M8 x 1	18 mm
LU-1910	M8 x 1	M8 x 1	32 mm
LU-1920	1/8" BSPT	1/8" BSPT	18 mm
LU-1930	1/8" BSPT	1/8" BSPT	22 mm
LU-1940	1/8" BSPT	1/8" BSPT	35 mm
LU-1950	1/8" BSPT	1/8" BSPT	50 mm

### 90° BANJO ELBOW BRASS



7900

PART NUMBER	MALE THREAD	FEMALE THREAD	TUBE OD
LU-1650	M8 x 1	M8 x 1	4 mm
LU-1660	M10 x 1	M8 x 1	4 mm
LU-1670	M6 x 1	M10 x 1	6 mm
LU-1680	M8 x 1	M10 x 1	6 mm
LU-1690	M10 x 1	M10 x 1	6 mm
LU-1700	1/8" BSPT	M10 x 1	6 mm

## HIGH PRESSURE HOSE & FITTINGS

### HOSE SPECIFICATIONS

Burst pressure	840 bar (12183 psi) @ 20°C
Hose length	10 m

### MATERIALS

Inner	Polyamide 6 (PA6) tube is encased & embedded in polyester mesh
Outer	Polyurethane coat is adhered onto the polyester mesh & inner tube

### STRAIGHT INSERT ZINC NICKEL COATED



7900

PART NUMBER	STANDPIPE OD	HOSE OD
LU-1740	4 mm	8.75 mm
LU-1750	6 mm	8.75 mm
LU-1770	8 mm	11.30 mm

### 316 STAINLESS STEEL

LU-1760S/S	6 mm	8.75 mm
------------	------	---------

### HIGH PRESSURE HOSE GREASE FILLED



7900

PART NUMBER				
LU-1720	8.75	4.0	840	10
LU-1765	11.30	6.3	840	10

### NON-GREASE FILLED

LU-1710	8.75	4.0	840	10
LU-1730	11.30	6.3	840	10

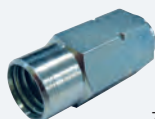
### FERRULES ZINC NICKEL COATED



7900

PART NUMBER	HOSE OD
LU-1800	8.75 mm
LU-1810	11.30 mm

### FERRULES 316 STAINLESS STEEL



7900

PART NUMBER	HOSE OD
LU-1820S/S	8.75 mm

### 45° INSERT ZINC NICKEL COATED



7900

PART NUMBER	STANDPIPE OD	HOSE OD
LU-1785	6 mm	8.75 mm

### 90° INSERT ZINC NICKEL COATED



7900

PART NUMBER	STANDPIPE OD	HOSE OD
LU-1780	6 mm	8.75 mm
LU-1790	8 mm	11.30 mm

### Do you also need?

### Tubing & hose symbol guide

Find it on page 260, section four