

SF SERIES

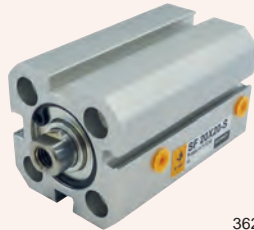
DESCRIPTION

The SF series ISO21287 is a standard compact pneumatic cylinder with a bore size ranging from 20 to 100 mm. The cylinder is designed to be more robust with self-lubricating bronze bearings that provide high guiding performance. The piston rod and rod connection are designed with a rotary riveting structure to ensure high concentricity, smooth running, and low starting pressure.

The compact cylinder features slots for four-sided magnetic switches and has various mountings that make installation easy. The rear cap and cylinder body are riveted for superior assembling reliability, while the front cap and barrel are connected by a buckle for easier maintenance.

SPECIFICATIONS

Cylinder type	Double acting, magnetic positioning
Max. working pressure	10 bar
Operating temperature	-20°C to +80°C (dry air)
Available bore size	ø20 – 100 mm
Available stroke length	10 – 50 mm
Cushion type	Rubber



3620

FEATURES / BENEFITS

- ISO21287 standard cylinder
- Compact structure, 50% space saving compared to ISO15552 standard pneumatic cylinders
- Double-ended cushion gasket, provides smooth reversing, less impact & mechanical damage
- Rotary riveted piston rod & rod connection, offering high concentricity
- Riveted rear cover & body for reliability

Do you also need?



Speed controllers

Find it on pages 497 – 501, section eight

SF SERIES

20 MM BORE

PART NUMBER	BORE	STROKE
EM-SF20X10-S	20 mm	10 mm
EM-SF20X15-S	20 mm	15 mm
EM-SF20X20-S	20 mm	20 mm
EM-SF20X25-S	20 mm	25 mm
EM-SF20X30-S	20 mm	30 mm
EM-SF20X40-S	20 mm	40 mm
EM-SF20X50-S	20 mm	50 mm

25 MM BORE

EM-SF25X10-S	25 mm	10 mm
EM-SF25X15-S	25 mm	15 mm
EM-SF25X20-S	25 mm	20 mm
EM-SF25X25-S	25 mm	25 mm
EM-SF25X30-S	25 mm	30 mm
EM-SF25X40-S	25 mm	40 mm
EM-SF25X50-S	25 mm	50 mm

32 MM BORE

EM-SF32X10-S	32 mm	10 mm
EM-SF32X15-S	32 mm	15 mm
EM-SF32X20-S	32 mm	20 mm
EM-SF32X25-S	32 mm	25 mm
EM-SF32X30-S	32 mm	30 mm
EM-SF32X40-S	32 mm	40 mm
EM-SF32X50-S	32 mm	50 mm

40 MM BORE

PART NUMBER	BORE	STROKE
EM-SF40X10-S	40 mm	10 mm
EM-SF40X15-S	40 mm	15 mm
EM-SF40X20-S	40 mm	20 mm
EM-SF40X25-S	40 mm	25 mm
EM-SF40X30-S	40 mm	30 mm
EM-SF40X40-S	40 mm	40 mm
EM-SF40X50-S	40 mm	50 mm

50 MM BORE

EM-SF50X10-S	50 mm	10 mm
EM-SF50X15-S	50 mm	15 mm
EM-SF50X20-S	50 mm	20 mm
EM-SF50X25-S	50 mm	25 mm
EM-SF50X30-S	50 mm	30 mm
EM-SF50X40-S	50 mm	40 mm
EM-SF50X50-S	50 mm	50 mm

63 MM BORE

EM-SF63X10-S	63 mm	10 mm
EM-SF63X15-S	63 mm	15 mm
EM-SF63X20-S	63 mm	20 mm
EM-SF63X25-S	63 mm	25 mm
EM-SF63X30-S	63 mm	30 mm
EM-SF63X40-S	63 mm	40 mm
EM-SF63X50-S	63 mm	50 mm

Additional strokes available on all bore sizes