



LEVER
3/2

PART NUMBER	FUNCTION	PORT SIZE
Z138-900	3/2 NC	1/8"
Z134-900	3/2 NC	1/4"

5/2

Z158-900	5/2	1/8"
Z154-900	5/2	1/4"

LEVER
3/2

PART NUMBER	FUNCTION	PORT SIZE
Z138-935	3/2 NC	1/8"
Z134-935	3/2 NC	1/4"



2530

LEVER
3/2

PART NUMBER	FUNCTION	LEVER/SPRING	PORT SIZE
Z338-900	3/2 NC	L/L	1/8"
Z338-905	3/2 NC	L/S	1/8"
Z434-900	3/2 NC	L/L	1/4"
Z434-905	3/2 NC	L/S	1/4"

5/2

Z358-900	5/2	L/L	1/8"
Z358-905	5/2	L/S	1/8"
Z454-900	5/2	L/L	1/4"
Z454-905	5/2	L/S	1/4"

5/3

Z368-900	5/3 CC	L/L/L	1/8"
Z368-905	5/3 CC	L/S/L	1/8"
Z378-900	5/3 CO	L/L/L	1/8"
Z378-905	5/3 CO	L/S/L	1/8"
Z464-900	5/3 CC	L/L/L	1/4"
Z464-905	5/3 CC	L/S/L	1/4"
Z474-900	5/3 CO	L/L/L	1/4"
Z474-905	5/3 CO	L/S/L	1/4"

FOOT OPERATED PEDAL VALVES

DESCRIPTION

The pedals can be supplied in either the pneumatic or electrical foot operated version. The pneumatic type is available with a 5/2 valve & 1/4" front ports, which allow the fittings & silencers to be assembled conveniently on the front face. A 3/2 operation can be obtained by closing an outlet port. The electrical type is available with a single pole changeover contact microswitch & a front wire outlet (PG9). The pedal can be operated as bi-stable or monostable, by switching the selector placed under the small red protection flap.

SPECIFICATIONS – PNEUMATICALLY OPERATED

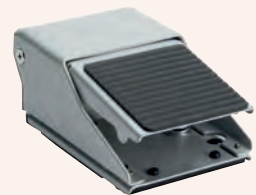
Type of construction	Spool type
Valve function	3/2 & 5/2
Materials	Valve body AL, stainless steel spool, NBR seals, plastic casing
Assembly	Valve built into pedal body
Operating temperature	0°C to 50°C (with dry air -10°C)
Operating pressure	2.5 to 8 bar
Rated flow	650 NI/min
Ports	1/4" gas



PNEUMATICALLY OPERATED FOOT VALVE

2530

PART NUMBER	FUNCTION
Z354925	5/2



FOOT OPERATED VALVE

2530

PART NUMBER	FUNCTION	PORT SIZE
Z235-925	3/2 NC	M5
Z234-925	3/2 NC	4 mm tube