



**EQUAL 2-WAY Y PIECE  
BSPP FEMALE**

3520

PART NUMBER	THREAD
Z20431/8	1/8" BSPP
Z20431/4	1/4" BSPP
Z20433/8	3/8" BSPP
Z20431/2	1/2" BSPP



**EQUAL 2-WAY Y PIECE  
BSPT MALE / BSPP FEMALE**

3520

PART NUMBER	MALE THREAD	FEMALE THREAD
Z20401/8	1/8" BSPT	1/8" BSPP
Z20401/4	1/4" BSPT	1/4" BSPP
Z20403/8	3/8" BSPT	3/8" BSPP
Z20401/2	1/2" BSPT	1/2" BSPP



**SINGLE BANJO CONNECTOR  
METRIC FEMALE**

3520

PART NUMBER	TUBE OD	THREAD
Z2023M5M5	10.5 mm	M5
Z2023M6	10.5 mm	M6

**BSPP FEMALE**

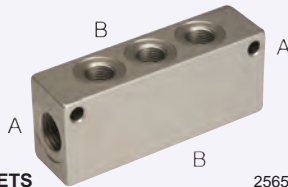
PART NUMBER	TUBE OD	THREAD
Z20231/8	20.0 mm	1/8" BSPP
Z20231/4	23.5 mm	1/4" BSPP
Z20233/8	23.5 mm	3/8" BSPP



**DISTRIBUTION BLOCK  
BSPP FEMALE**

2565

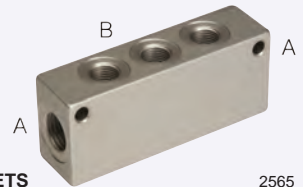
PART NUMBER	THREAD
Z30331/8	1/8" BSPP
Z30331/4	1/4" BSPP
Z30333/8	3/8" BSPP
Z30331/2	1/2" BSPP



**PNEUMATIC MANIFOLD  
WITH DOUBLE SIDED OUTLETS**

2565

PART NUMBER	THREAD A	OUTLETS	THREAD B
Z3043-14318	1/4"	3 + 3	1/8"
Z3043-14418	1/4"	4 + 4	1/8"
Z3043-14518	1/4"	5 + 5	1/8"
Z3043-14618	1/4"	6 + 6	1/8"
Z3043-38314	3/8"	3 + 3	1/4"
Z3043-38414	3/8"	4 + 4	1/4"
Z3043-38514	3/8"	5 + 5	1/4"
Z3043-38614	3/8"	6 + 6	1/4"
Z3043-12338	1/2"	3 + 3	3/8"
Z3043-12438	1/2"	4 + 4	3/8"
Z3043-12538	1/2"	5 + 5	3/8"
Z3043-12638	1/2"	6 + 6	3/8"



**PNEUMATIC MANIFOLD  
WITH SINGLE SIDED OUTLETS**

2565

PART NUMBER	THREAD A	OUTLETS	THREAD B
Z3053-14318	1/4"	3	1/8"
Z3053-14418	1/4"	4	1/8"
Z3053-14518	1/4"	5	1/8"
Z3053-14618	1/4"	6	1/8"
Z3053-38314	3/8"	3	1/4"
Z3053-38414	3/8"	4	1/4"
Z3053-38514	3/8"	5	1/4"
Z3053-38614	3/8"	6	1/4"
Z3053-12338	1/2"	3	3/8"
Z3053-12438	1/2"	4	3/8"
Z3053-12538	1/2"	5	3/8"
Z3053-12638	1/2"	6	3/8"