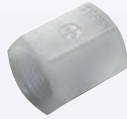
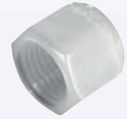


PVDF FITTINGS – WHITE


**PIPE CONNECTOR
BSPT FEMALE**


3870

PART NUMBER	THREAD
TF-12050302021	1/8" BSPT
TF-12050304041	1/4" BSPT
TF-12050306061	3/8" BSPT
TF-12050308081	1/2" BSPT
TF-12050312121	3/4" BSPT


**PIPE CAP
BSPT FEMALE**


3870

PART NUMBER	THREAD
TF-12050802001	1/8" BSPT
TF-12050804001	1/4" BSPT
TF-12050806001	3/8" BSPT
TF-12050808001	1/2" BSPT
TF-12050812001	3/4" BSPT


**THREADED ELBOW
BSPT MALE**


3870

PART NUMBER	THREAD
TF-12056502001	1/8" BSPT
TF-12056504001	1/4" BSPT
TF-12056506001	3/8" BSPT
TF-12056508001	1/2" BSPT


**THREADED TEE CONNECTOR
BSPT MALE**


3870

PART NUMBER	THREAD
TF-12056402001	1/8" BSPT
TF-12056404001	1/4" BSPT
TF-12056406001	3/8" BSPT
TF-12056408001	1/2" BSPT


**HEX THREADED PLUG
BSPT MALE**


3870

PART NUMBER	THREAD
TF-12052102001	1/8" BSPT
TF-12052104001	1/4" BSPT
TF-12052106001	3/8" BSPT
TF-12052108001	1/2" BSPT
TF-12052112001	3/4" BSPT
TF-12052116001	1" BSPT

REINFORCED POLYPROPYLENE FITTINGS – BLUE

FEATURES

Tefen barb block fittings are mechanical push-on compression fittings that can operate with numerous types of plastic tubes in the range between 1/4" – 1/2", 6 – 12 mm. The fittings sealing mechanism is based on a barb & tightening nut.

How to use: insert the nut onto the tube, insert the tube onto the barb & then secure the nut tightly on the barb support thread.

Main use: connection of plastic tubes of hydraulic & pneumatic systems.

Main advantages: highly chemical resistant, durable resistant for tube pullout, no rubber seals – long service life without leaks.

SPECIFICATIONS

Working pressure	Up to 14 bar (200 psi) at 20°C
Temperature range	4°C to 90°C (39°F to 194°F) subject to application
Colour	Blue
Material	Reinforced polypropylene

CERTIFICATIONS & CONFORMITY


For blue & black polypropylene only


UNION CONNECTOR


3860

PART NUMBER	TUBE OD	TUBE ID
TF-22046246008	6 mm	4 mm
TF-22046248008	8 mm	6 mm
TF-22046252008	12 mm	9 mm


REDUCING CONNECTOR


3860

PART NUMBER	TUBE OD	TUBE ID
TF-22045648468	8 x 6 mm	6 x 4 mm