

INSTAGRIP™ HOSE

SUITABILITY	FEATURES / BENEFITS
<ul style="list-style-type: none"> Low pressure hydraulic, pneumatic systems 	<ul style="list-style-type: none"> Excellent weather, abrasion & oil resistance Non-conductive Minimal electrical resistance – greater than 1 megohm per inch of hose length at 1000 Volts DC MSHA approved covers

Extra carriage costs may be incurred

SPECIFICATIONS	
Temperature range	-40°C to +99°C
Construction	Chemivic® oil & heat resistant synthetic rubber, RMA Class A (high oil resistance) tube. Carbryn® rubber, RMA Class A (high oil resistance) outer. Braided high strength synthetic yarn laid at an angle for strength & coupling holding ability.



INSTAGRIP™ HOSE
BLACK – 15.2 METRE COILS 8510

PART NUMBER			
G535-278-14	0.51	1/4	20
G535-278-38	0.67	3/8	20
G535-278-12	0.76	1/2	20
G535-278-34	1.06	3/4	20



INSTAGRIP™ HOSE
RED – 15.2 METRE COILS 8510

PART NUMBER			
G535-280-14	0.51	1/4	20
G535-280-38	0.67	3/8	20
G535-280-12	0.76	1/2	20
G535-280-34	1.06	3/4	20



INSTAGRIP™ HOSE
BLUE – 15.2 METRE COILS 8510

PART NUMBER			
G535-281-14	0.51	1/4	20
G535-281-38	0.67	3/8	20
G535-281-12	0.76	1/2	20
G535-281-34	1.06	3/4	20



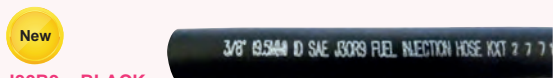
INSTAGRIP™ HOSE
GREEN – 15.2 METRE COILS 8510

PART NUMBER			
G535-279-14	0.51	1/4	20
G535-279-38	0.67	3/8	20
G535-279-12	0.76	1/2	20
G535-279-34	1.06	3/4	20

SAE J30R9 AUTOMOTIVE FUEL INJECTION HOSE

SUITABILITY	FEATURES / BENEFITS
<ul style="list-style-type: none"> Petrol Ethanol extended fuels Diesel Bio-diesel 	<ul style="list-style-type: none"> Medium-pressure, low-permeation fuel injection hose recommended for gasoline, ethanol, sour gas, diesel & biodiesel fuels FKM fluoroelastomer tube provides excellent chemical resistance & exceptional permeation properties to meet the latest EPA & CARB emissions requirements

SPECIFICATIONS	
Temperature range	-35°C to +135°C
Pressure rating	Values given are based on the short term burst pressure of J30R9 hose at 20°C using a 3:1 safety factor. NOTE: Any increase in temperature above 20°C will result in a decline in the working pressure values.
Construction	Fluoroelastomer hose with black chlorinated polyethylene cover and polyester reinforcement.
Applicable standards	Conforms to CARB requirements set forth in 13CCR section 2754



J30R9 – BLACK
15.2 METRE COILS 8510

PART NUMBER				
G0790110	6.35	1/4	0.50	6.9
G0790115	7.94	5/16	0.56	6.9
G0790120	9.53	3/8	0.63	6.9
G0790130	12.7	1/2	0.80	6.9