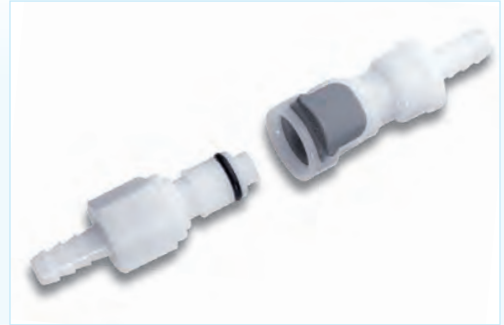


FEATURES	BENEFITS
<ul style="list-style-type: none"> <li>• Plastic thumb latch</li> <li>• Shrouded thumb latch</li> <li>• Integral terminations</li> <li>• Compatible</li> </ul>	<ul style="list-style-type: none"> <li>• No exposed metal parts</li> <li>• Protects against accidental disconnection</li> <li>• Fewer leak points, shorter assemblies, faster installations</li> <li>• Mates with most EFC couplings</li> </ul>
SPECIFICATIONS	
Coupling colour	Acetal / white
Latch colour	Acetal / grey
Seal material	NBR
Valve spring	316 stainless steel
Valve	Acetal
Lubricants	Silicone, others available
Working pressure	Vacuum to 120 psi (8.3 bar)
Operating temperature	-40°C to +82°C (-40°F to +180°F)



Min. quantities may apply – please ask at time of ordering

Also available NSF listed

## COUPLING BODIES

### PIPE THREAD – VALVED NPT MALE



800

PART NUMBER	THREAD
cAPCD100-04	1/4" NPT
cAPCD100-06	3/8" NPT

### BSPT MALE

PART NUMBER	THREAD
cAPCD100040	1/4" BSPT
cAPCD100060	3/8" BSPT

### UNVALVED NPT MALE

PART NUMBER	THREAD
cAPC100-04	1/4" NPT
cAPC100-06	3/8" NPT

### BSPT MALE

PART NUMBER	THREAD
cAPC100-040	1/4" BSPT
cAPC100-060	3/8" BSPT

### IN-LINE – UNVALVED HOSE BARB



800

PART NUMBER	TUBE ID	METRIC EQ.
cAPC170-04	1/4"	6.4 mm
cAPC170-06	3/8"	9.5 mm

### IN-LINE – VALVED WITH SHROUD HOSE BARB



800

PART NUMBER	TUBE ID	METRIC EQ.
cAPCD17004S	1/4"	6.4 mm
cAPCD17006S	3/8"	9.5 mm

### UNVALVED – WITH SHROUD

PART NUMBER	TUBE ID	METRIC EQ.
cAPC17004S	1/4"	6.4 mm
cAPC170-06S	3/8"	9.5 mm

### IN-LINE – VALVED WITH SHROUD FERRULESS POLYTUBE FITTING, PTF



800

PART NUMBER	TUBE OD	TUBE ID	METRIC EQ.
cAPCD13004S	1/4"	0.17"	6.4 x 4.3 mm
cAPCD13M8S	–	–	8 x 6 mm
cAPCD13006S	3/8"	0.25"	9.5 x 6.4 mm

### UNVALVED – WITH SHROUD

PART NUMBER	TUBE OD	TUBE ID	METRIC EQ.
cAPC130-04S	1/4"	0.17"	6.4 x 4.3 mm
cAPC130-06S	3/8"	0.25"	9.5 x 6.4 mm

### PANEL MOUNT – VALVED HOSE BARB



800

PART NUMBER	TUBE ID	METRIC EQ.
cAPCD160-04	1/4"	6.4 mm
cAPCD160-05	5/16"	7.9 mm
cAPCD160-06	3/8"	9.5 mm

### UNVALVED

PART NUMBER	TUBE ID	METRIC EQ.
cAPC160-04	1/4"	6.4 mm
cAPC160-05	5/16"	7.9 mm
cAPC160-06	3/8"	9.5 mm

### PANEL MOUNT – VALVED FERRULESS POLYTUBE FITTING, PTF



800

PART NUMBER	TUBE OD	TUBE ID	METRIC EQ.
cAPCD120-04	1/4"	0.17"	6.4 x 4.3 mm
cAPCD120M8	–	–	8 x 6 mm
cAPCD120-06	3/8"	0.25"	9.5 x 6.4 mm
cAPCD120M10	–	–	10 x 8 mm

### UNVALVED

PART NUMBER	TUBE OD	TUBE ID	METRIC EQ.
cAPC120-04	1/4"	0.17"	6.4 x 4.3 mm
cAPC120-M8	–	–	8 x 6 mm