

PRODUCT SERIES SPECIFICATIONS

Series: BLQ

Category: Liquid Cooling

Pressure: Vacuum to 120 psi, 8.3 bar

Temperature: 0°F to 240°F (-17°C to 115°F)

Spillage & Air Inclusion:

≤0.025 cc per disconnect at 0 psi and

≤0.055 cc per disconnect rated at 120 psi

≤0.025 cc per connect

Material Compliance

Reach: Compliance

RoHS: Compliance

For more information see cpcworldwide.com or
contact us at cpcworldwide.com/ContactUs

Interactive 3D graphic, click to activate and rotate.

Everis(TM) BLQ4 Series quick disconnect couplings provide ultra-reliable, dripless connections and disconnections that protect valuable electronics. Designed specifically for rack mounted liquid cooling applications, Everis BLQ4 blind mates utilize patent-pending valve technology that eliminates drips and is designed for long-term connected use.

Features - Benefits

Non-spill design - Disconnect under pressure with no spills

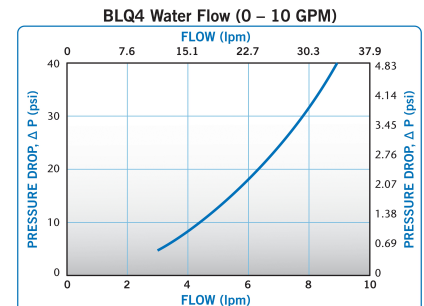
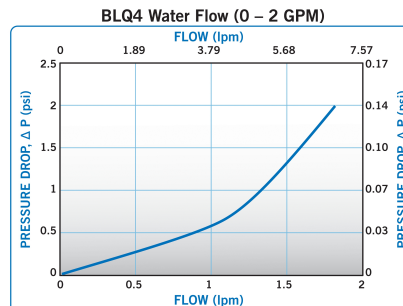
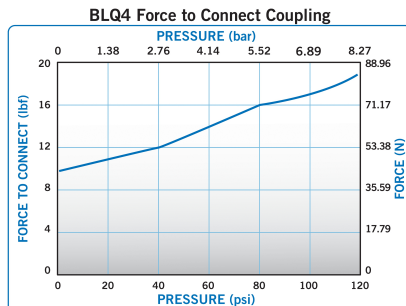
Redundant sealing when connected - Extra protection from leaks

Friction-free valve - Allows for extended periods in connected state

Ruggedness - Able to withstand long-term, repeated use

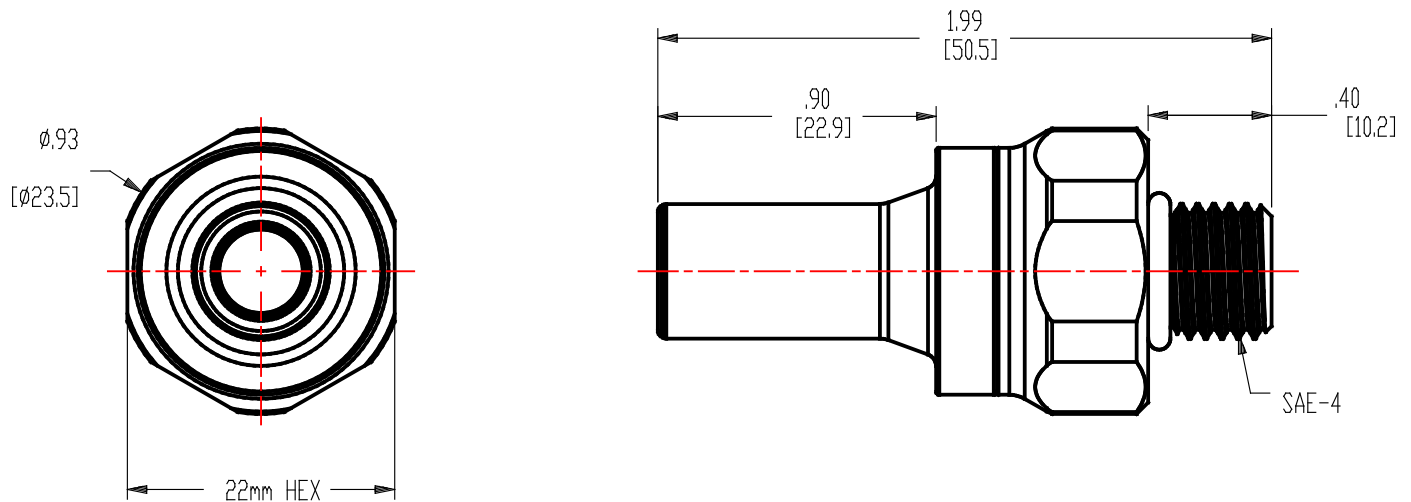
Axial engagement tolerance - Extra protection from contaminants and debris

Single-piece options for body & insert - Simplest configuration



These graphs are intended to give you a general idea of the performance capabilities of each product line. Contact CPC for flow of a particular coupling combination.

Technical details:



Description: 1/4" Blind Mate SAE-04 Valved In-Line Liquid Cooling Coupling Insert

Materials:

Main Components: Chrome plated brass

Valve: Polysulfone

Valve Spring: Stainless Steel

Seals: EPDM

Standard Packaging Quantity: 10