



**BAND-IT®**  
THE CLAMPING EXPERTS



ENVER CO • • • 1 • • • MADE IN THE U.S.A. • • • 2 • • • 8 • • • BAND-IT® DENVER CO • • • 1 • • • MADE IN THE U.S.A. • • • 2 • • • 8 • • •

**Stainless Steel  
Fastening Solutions  
for the Automotive  
Aftermarket**

**IDEX**  
IDEX CORPORATION

# REPLACE OR INSTALL OEM TPMS SYSTEMS USING BAND-IT® PRODUCTS

BAND-IT® 3/8" wide TIE-LOK® Ties are the best choice for OEM Style TPMS Sensor replacements and new installations.

- The same design as supplied to the OEM's
- All Stainless Steel construction ties
- Eliminates the risk of worm gear style clamps loosening from vibration
- Low profile, light weight design, yet very strong
- Fast and easy to install with repeatable tension tool
- Universal size reduces need for multiple SKU's
- Secure sensors on inside rims up to 24" diameter
- Withstands extreme temperatures and corrosive environments
- Hand tool with Engineered TENSION CONTROL provides consistent tightness every time

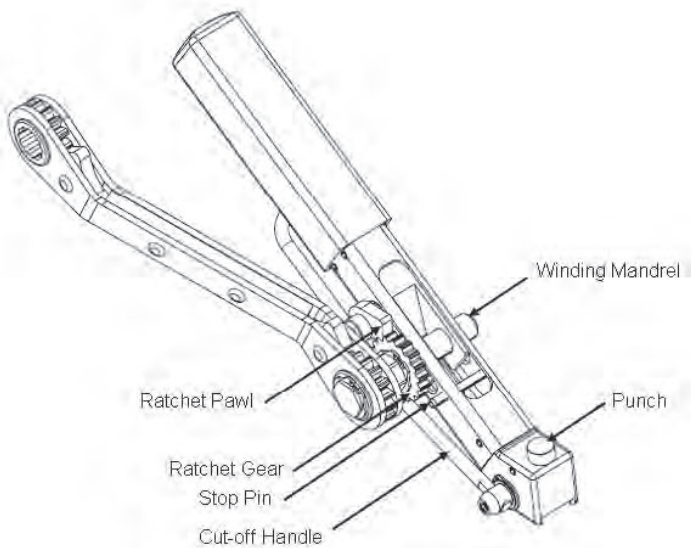


Figure 1



TL3800

Figure 2

## BAND-IT'S TIE-LOK® CLAMPING SYSTEM

The BAND-IT® 3/8" wide Tie-Lok® is a Tie composed of a flat piece of band and a buckle that floats on the Tie but is captured by two formed tabs. When applying the Tie-Lok®, the Tie is formed into a circle with the tail being inserted into the buckle. The application tool (TL3800) applies controlled tension to the Tie to fit the wheel. Once the designed tension is reached, the operator uses the tool to form a dimple within the buckle and cut off the excess tail. The dimple is the locking element of the Tie-Lok® Tie. It is formed through a hole in the top of the buckle, forcing band material into the hole on the bottom side of the buckle.

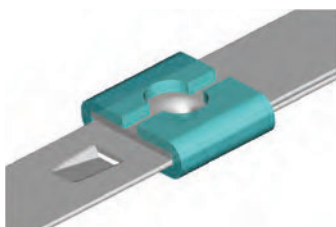


Figure 3 Tie-Lok® Clamp

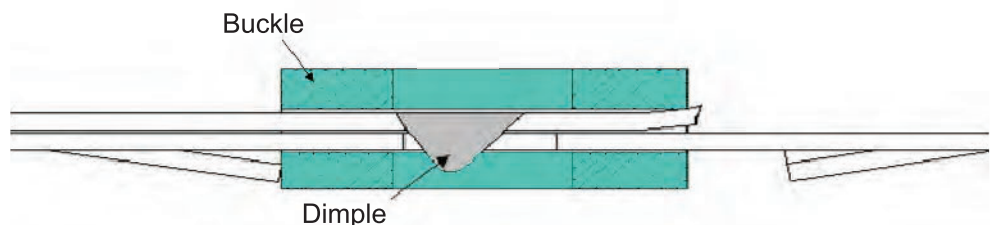


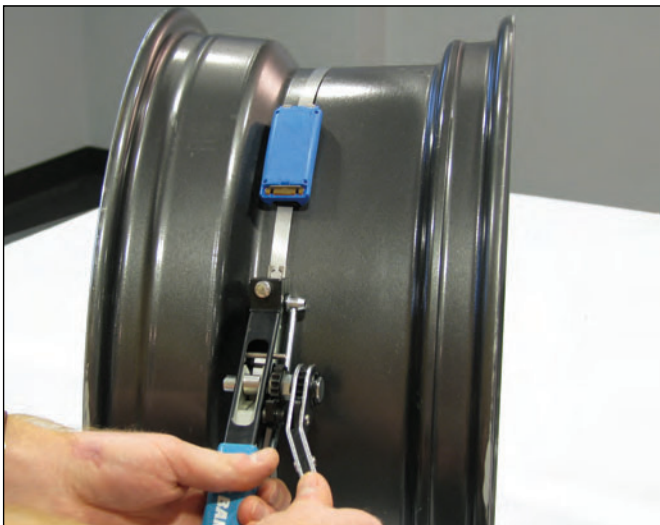
Figure 4 Side View of Tie-Lok®



## INSTALLING A TIE-LOK® CLAMP



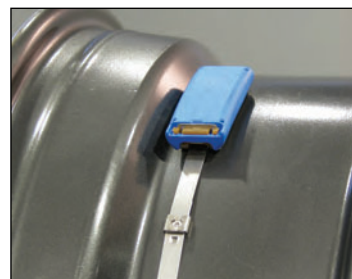
Begin by wrapping the 3/8" wide Tie through the sensor and around the wheel at it's smallest diameter, being careful to position the Tie evenly around the rim. Make sure the slot of buckle is facing up, away from the wheel.



Insert the Stainless Steel Tie into the tool and tension using forward ratcheting strokes. When the ratchet gear makes contact with the stop pin, the clamp is tight and ready to be terminated.



Lock the clamp by hitting the punch with a hammer to form the strong dimple lock. Once locked, cut off the excess band tail by pushing the cut-off handle downward.



# BAND-IT®

Example of Finished Clamp

## ABOUT BAND-IT®

- Over 70 years of experience in stainless steel clamping solutions.
- ISO/TS16949 / ISO9001 / ISO14001 registration for excellence in quality systems.
- Applications Engineers dedicated to providing applications support and fulfilling TS requirements for vehicle OEM customers.
- Global manufacturing and distribution facilities.
- A unit of IDEX Corporation (NYSE: IEX).

## PNEUMATIC TOOLS WITH DATA ACQUISITION

- Verifies tension parameters via a pressure transducer in the tension cylinder.
- Visual error alerts for high and low tension pressure and improper cutoff.
- Records number of cycles to accurately track daily clamp output and scheduled maintenance intervals.
- 12 vDC relays close on errors and cycle completion to allow for customized audio or visual alarms.



### Proud supplier to:



All trademarks are the property of their respective owners

#### EUROPEAN OPERATIONS

BAND-IT Company LTD.  
Phone: (44) 1246-479479  
(44) 1246-479480  
Fax: (44) 1246-476324

Email: EUROPEinfo.BAND-IT@idexcorp.com  
Website: www.band-it.co.uk

#### LATIN AMERICAN SALES OFFICE

Phone: (52) 55 5825-8502  
Fax: (52) 55 5825-8502  
Email: LAinfo.BAND-IT@idexcorp.com



#### WORLD HEADQUARTERS

NORTH AMERICAN OPERATIONS  
BAND-IT-IDEX, Inc.

Western Hemisphere Sales and Marketing  
Phone: (1) 303-320-4555  
Fax: (1) 303-333-6549  
Email: info.BAND-IT@idexcorp.com  
Website: www.BAND-IT-IDEX.com



© Copyright BAND-IT-IDEX, INC.  
A Unit of IDEX Corporation  
Denver, Colorado U.S.A. 2008. All rights reserved.

#### PACIFIC RIM OPERATIONS

BAND-IT Clamps (Asia) Pte. LTD.  
Phone: (65) 6265-8853  
(65) 6265-8783  
Fax: (65) 6265-8902

Email: PACIFICRIMinfo.BAND-IT@idexcorp.com  
Website: www.band-it-clamps.com

#### CHINA SHANGHAI SALES OFFICE

Phone: (86) 21 5241-5599  
Fax: (86) 21 5241-8338  
Email: CHINAinfo.BAND-IT@idexcorp.com  
Website: www.band-it.com.cn

#### JAPAN SALES OFFICE

Email: BID.JapanInfo.BAND-IT@idexcorp.com