

10mm CSV Cartridge Style Valve



Humphrey

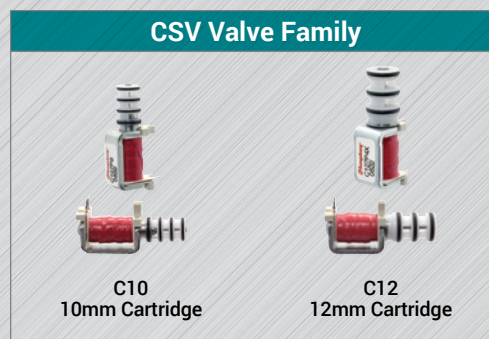
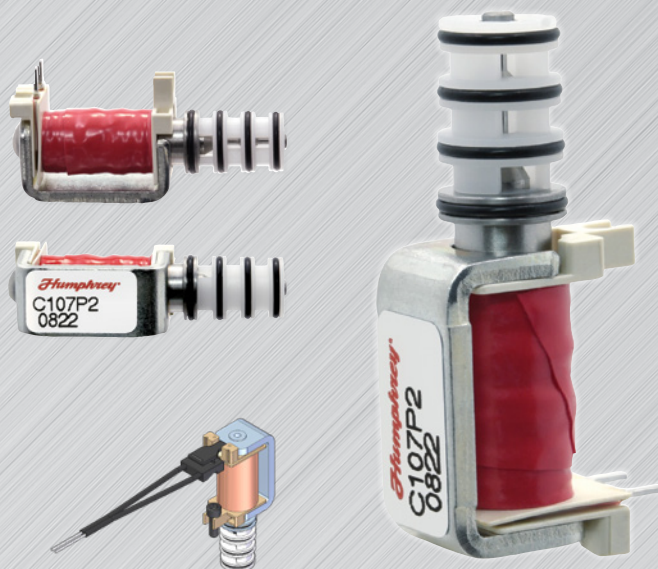
Miniature 2- or 3-Way Pneumatic Solenoid Valve

Humphrey 10mm CSV Solenoid Valve was purposely engineered for optimal flow and integration into compact spaces required from today's high tech device and instrument maker. Multi-purpose, cartridge design delivers wide functionality and porting flexibility, optimizing your miniature media control system.

Purchase the CSV only and design your own manifold porting solution, or let our Humphrey Engineered Solutions Team listen to your expectations and model one up for you.

FEATURES

- Maximized Flow Capacity
- Fast Response, Direct-Acting Design
- Designed for user flexibility and integration into compact devices or spaces
- Pressure Balanced – ready for use as 2- or 3-way
- Normally Closed or Normally Open
- Customizable for different power and flow requirements



Scan for additional product details on our online catalog.



How to Order

10mm CSV Cartridge Style Valve

C10	7A		2		C107A2
MODEL	ELECTRICAL ENTRY 7A: Axial Plug-In 7P: Perpendicular Plug-In	SEAL nil: NBR E: EPDM F: FKM	VOLTAGE 2: 12VDC 4: 24VDC	CONNECTOR nil: Plug-In Electrical Connector with 30cm lead wires included X: Plug-In Electrical Connector excluded or leads	ORDER EXAMPLE

10mm CSV Cartridge Style Valve

SPECIFICATIONS	10MM CSV
TYPE OF OPERATION	Direct Solenoid
FUNCTION	2- or 3-Way, NC or NO
MEDIA	Air, Oxygen, Inert Gas
PRESSURE RATING – PSI (BAR)	VAC-30 (2)
RESPONSE TIME (TYP)**	9ms on, 6ms off
MAXIMUM FLOW @ 30 PSI	45 SLPM (.075 Cv)
AMBIENT TEMPERATURE	32-125°F (0-52°C)
POWER CONSUMPTION (WATTS)	
12V MODEL	2
24V MODEL	2
NORMAL RESISTANCE (OHMS)	
12V MODEL @72°F (22°C)	72
24V MODEL @72°F (22°C)	288
WETTED MATERIALS	Acetal, LCP, SST, NBR (std), EPDM or FKM
WEIGHT – OZ (GRAMS)	.33 (11)
DUTY CYCLE*	Valve designed for PWM or Hit and Hold control.
COMPLIANCE	RoHS, REACH

* Valve not rated for continuous duty at rated voltage.

** After inactivity, "on" response time for 1st cycle will be longer than typical specification.

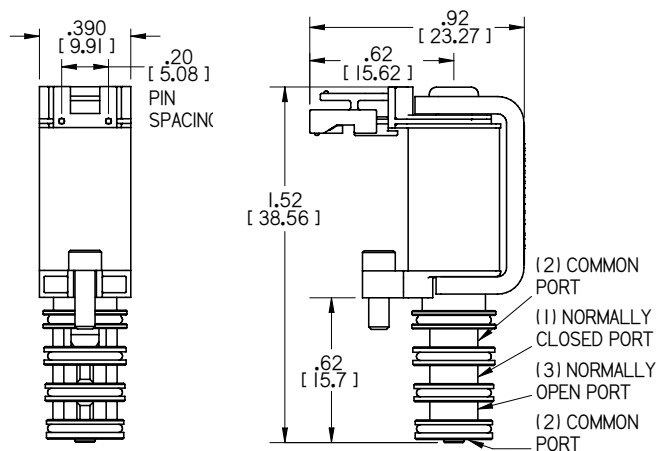
49081 CONNECTOR HARNESS ASSY (Replacement)



Length: 30cm

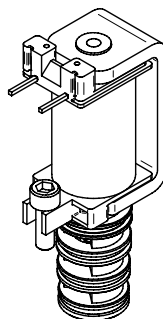
DIMENSIONAL DRAWINGS

Purposely designed to use one or both common ports for maximum manifold flexibility.



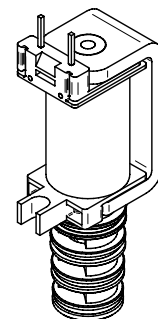
PERPENDICULAR PIN OPTION

Two 0.025" [0.64]
Square Pins



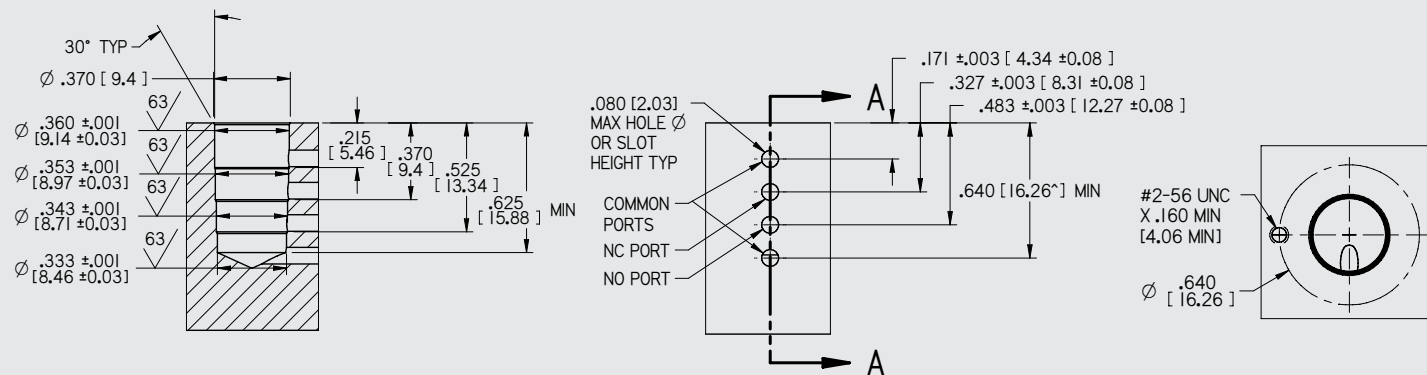
AXIAL PIN OPTION

Two 0.025" [0.64]
Square Pins



MANIFOLD INTERFACE

^ In order to use the bottom common port, this dimension is needed.



Certified: ISO 9001:2015

HUMPHREY-PRODUCTS.COM

Humphrey Life Science Group

© 2023 Humphrey Products Company, Inc.

Printed in U.S.A.

LDS10CSV23

Humphrey Products Company

5070 East N Avenue

Kalamazoo, MI 49048 USA

E: lsg@Humphrey-Products.com

P: 1.800.477.8707



Humphrey