



**BAND-IT**<sup>®</sup>  
**THE CLAMPING EXPERTS**



**Cable Management  
& Identification  
Products**

# BAND-IT® - The Standard of Excellence

**Over 70 Years of Experience in Stainless Steel Clamping, Bundling, Fastening and Identification Solutions!**

Founded in Denver, Colorado in 1937, BAND-IT is acknowledged as the world's leader in quality engineered band clamping systems. A unit of IDEX Corporation, BAND-IT has an international network of representatives and distributors, with manufacturing and distribution facilities serving users worldwide.



Industrial (including Agriculture & Construction), Defense, Hose, Electrical, Municipal, Utility, Electronic, Engineered Applications, Automotive Aftermarket, and Automotive OEM – almost every industry today uses BAND-IT® Clamps!

As demonstration of our ongoing commitment to excellence, quality and environmental management, BAND-IT is proud to display our certificates of compliance to the prestigious International Standards of ISO 9001, ISO 14001, and TS16949. Since becoming ISO 14001 certified in 1997, BAND-IT continues to implement new and innovative ways to reduce our environmental impact. This dedication has

enabled us to continually reduce our land-fill waste by 120 tons per year and reduce our overall consumption of energy and materials. BAND-IT demonstrates daily our commitment to our customers, our employees, and our environment.



All bands, clamps, ties, and buckles that are manufactured by BAND-IT-IDEX, Inc. are fully compliant within the EU RoHS Directive, 2002/95/EC.

## Core Values

As the foundation of our operating model, our core values unite our teams around the world by setting the standards for behavior. Our core values apply to everything we do:

- Our **CUSTOMER** is our priority.
- We **GROW** our enterprise and people.
- Our **INTEGRITY** is paramount.
- We strive for **EXCELLENCE**.
- We are passionate about **SUCCESS**.

For the latest BAND-IT catalogs, product information manuals and FAQ's, visit our website:  
[www.BAND-IT-IDEX.com](http://www.BAND-IT-IDEX.com)

## Proud Members of:



**Current BAND-IT employees are sustaining members of SAE.**

# Identification for Harsh Environments

You've always known us as



Now get to know us as



BAND-IT has combined over 70 years of industry leading attachment experience with a global identification capability to offer Identification for Harsh Environments.

**Stainless Steel Tags, Ties, Bands**

All available in

**COLOR-IT™**

to enhance your identification message.

---

**Custom Embossing, Imprinting and  
Stamping Available.**



# Multi-Lok Ties

## Self-Locking Multi-Lok Ties

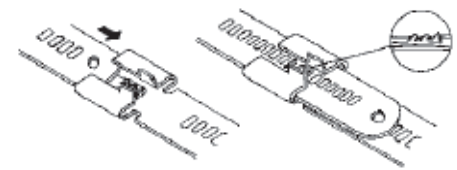
Fire hazards...corrosive environments... temperature extremes...for many cable bundling applications, plastic ties are simply inadequate - or even dangerous.

That's why BAND-IT developed stainless steel Multi-Lok Ties. Unaffected by fire, U.V. or extreme temperatures, corrosion resistant Multi-Lok Ties provide a safe, strong, worry-free hold.

Quickly and easily applied by hand or with the BAND-IT® Cable Tie Tensioner or Tensioning Hook, Multi-Lok Ties feature a unique, self-locking, multiple locking system that holds in excess of 250 lbs.



Multi-Lok Ties are manufactured from Type 316 stainless steel and are available either uncoated or coated with Nylon 11 for added corrosion, chemical and weathering resistance. Ties are available in two widths and lengths from 6" to 24". (Contact BAND-IT for special orders)



## Multi-Lok Tool

Quickly, easily and consistently applies any size Multi-Lok tie, coated or uncoated. Simply adjust the Multi-Lok Tool for the desired tension, slip the Multi-Lok in the slot and squeeze the handle. When the proper tension is reached, the Multi-Lok Tool automatically cuts the tail off flush with the buckle.

As the free end of the Multi-Lok Ties passes through the buckle, three separate teeth (four teeth in the 12mm Multi-Lok) mesh with corresponding slots in the band automatically locking the tie as it is being tensioned.



## Multi-Lok Tie

| Part No. | Material* | Width  |       | Length |      | Thickness   |             |           |           | Maximum Diameter Single Wrap | Minimum Loop Tensile Strength (Lbs) | Package Quantity | Package Weight |         | Application Tools |     |   |
|----------|-----------|--------|-------|--------|------|-------------|-------------|-----------|-----------|------------------------------|-------------------------------------|------------------|----------------|---------|-------------------|-----|---|
|          |           | In     | mm    | In     | mm   | Uncoated In | Uncoated mm | Coated In | Coated mm |                              |                                     |                  | Lbs            | Kg      |                   |     |   |
| AE6019   | AE6119    | 316 SS | 0.270 | 6.9    | 6.0  | 150         | 0.011       | 0.28      | 0.018     | 0.46                         | 1.3                                 | 33               | 250            | 100/bag | 0.7               | 0.3 | <div style="background-color: yellow; padding: 5px;">                     AE2009<br/>                     AE2018<br/>                     M50389<br/>                     or by hand                 </div> |
| AE6029   | AE6129    | 316 SS | 0.270 | 6.9    | 9.0  | 225         | 0.011       | 0.28      | 0.018     | 0.46                         | 2.2                                 | 57               | 250            | 100/bag | 0.9               | 0.5 |   |
| AE6039   | AE6139    | 316 SS | 0.270 | 6.9    | 12.0 | 300         | 0.011       | 0.28      | 0.018     | 0.46                         | 3.2                                 | 81               | 250            | 100/bag | 1.3               | 0.6 |   |
| AE6049   | AE6149    | 316 SS | 0.270 | 6.9    | 18.0 | 450         | 0.011       | 0.28      | 0.018     | 0.46                         | 5.1                                 | 129              | 250            | 100/bag | 1.8               | 0.8 |   |
| AE6059   | AE6159    | 316 SS | 0.270 | 6.9    | 24.0 | 610         | 0.011       | 0.28      | 0.018     | 0.46                         | 7.1                                 | 180              | 250            | 100/bag | 2.6               | 1.2 |   |
| AE7019   | AE7119    | 316 SS | 0.470 | 11.9   | 6.0  | 150         | 0.011       | 0.28      | 0.018     | 0.46                         | 1.3                                 | 33               | 400            | 100/bag | 1.1               | 0.5 |   |
| AE7029   | AE7129    | 316 SS | 0.470 | 11.9   | 9.0  | 225         | 0.011       | 0.28      | 0.018     | 0.46                         | 2.2                                 | 57               | 400            | 100/bag | 1.7               | 0.8 |   |
| AE7039   | AE7139    | 316 SS | 0.470 | 11.9   | 12.0 | 300         | 0.011       | 0.28      | 0.018     | 0.46                         | 3.2                                 | 81               | 400            | 100/bag | 2.2               | 1.0 |   |
| AE7049   | AE7149    | 316 SS | 0.470 | 11.9   | 18.0 | 450         | 0.011       | 0.28      | 0.018     | 0.46                         | 5.1                                 | 129              | 400            | 100/bag | 3.0               | 1.4 |   |
| AE7059   | AE7159    | 316 SS | 0.470 | 11.9   | 24.0 | 610         | 0.011       | 0.28      | 0.018     | 0.46                         | 7.1                                 | 180              | 400            | 100/bag | 4.3               | 2.0 |   |

## Multi-Lok Tool

| Cat. No. | Description  | Weight |     |
|----------|--|--------|-----|
|          |  | Lbs    | Kg  |
| M50389   | For installing Multi-Lok and other self-locking ties | .94    | .43 |



# All Purpose Band Coated Band



## All Purpose Band

Ideal for bending and forming around virtually any section or shape. Pre-punched holes make fastening quick and easy with simple, on-hand fasteners like nuts, bolts and screws.

Suspend pipe, hang ductwork, fasten cable...there are numerous applications for electricians, plumbers, HVAC installers, pipefitters and builders.

Available PPA coated or uncoated in 3 widths in Type 316 stainless steel or galvanized carbon steel.



## 316 Stainless Steel Band (PPA Coated)

Recommended for cable bundling in applications where high vibration is a concern. The austenitic stainless steel band is coated with PPA for long term corrosion protection. Apply coated band using BAND-IT® stainless steel clips and the Bantam Tool.



## All Purpose Band

| Part No. | Material*         | Width |      | Thickness |       | Diameter of Hole |    | Package Quantity | Package Weight |     |
|----------|-------------------|-------|------|-----------|-------|------------------|----|------------------|----------------|-----|
|          |                   | In    | mm   | In        | mm    | In               | mm |                  | Lbs            | Kg  |
| AE4759   | 316 SS (coated)   | 1/2   | 12.7 | 0.050**   | 1.3** | 3/16             | 5  | 82.5'/roll       | 3.1            | 1.4 |
| AE4769   | 316 SS (coated)   | 3/4   | 19.1 | 0.050**   | 1.3** | 9/32             | 7  | 82.5'/roll       | 5.3            | 2.4 |
| AE4779   | 316 SS (coated)   | 1     | 25.4 | 0.050**   | 1.3** | 5/16             | 8  | 82.5'/roll       | 7.3            | 3.3 |
| AE4259   | 316 SS (uncoated) | 1/2   | 12.7 | 0.030     | 0.76  | 3/16             | 5  | 82.5'/roll       | 3.1            | 1.4 |
| AE4269   | 316 SS (uncoated) | 3/4   | 19.1 | 0.030     | 0.76  | 9/32             | 7  | 82.5'/roll       | 4.6            | 2.1 |
| AE4279   | 316 SS (uncoated) | 1     | 25.4 | 0.030     | 0.76  | 5/16             | 8  | 82.5'/roll       | 5.5            | 2.5 |

\*\*Material thickness includes PPA 551 coating - Base material thickness is 0.030".



5/8" and larger widths

## 316 Stainless Steel Band Uncoated and Coated

| Part No. | Material* | Width |      | Thickness |      | Average Breaking Strength (lbs) | Package Quantity      | Package Weight |     | Application Tools   |
|----------|-----------|-------|------|-----------|------|---------------------------------|-----------------------|----------------|-----|---|
|          |           | In    | mm   | In        | mm   |                                 |                       | Lbs            | Kg  |   |
| C40299   | 316 SS    | 1/4   | 6.4  | 0.020     | 0.51 | 400                             | 100'/roll             | 2.0            | 0.9 | C00169<br>C07569<br>C08569<br>C00369<br>C40099<br>J02069† |
| C40399   | 316 SS    | 3/8   | 9.6  | 0.025     | 0.64 | 750                             | 100'/roll             | 3.5            | 1.6 |   |
| C403Y9   | 316 SS    | 3/8   | 9.6  | 0.025     | 0.64 | 750                             | Yellow Tote 100'/roll | 3.7            | 1.7 |   |
| C40499   | 316 SS    | 1/2   | 12.7 | 0.030     | 0.76 | 1200                            | 100'/roll             | 4.9            | 2.2 |   |
| C404B9   | 316 SS    | 1/2   | 12.7 | 0.030     | 0.76 | 1200                            | Blue Tote 100'/roll   | 5.6            | 2.6 |   |
| C40599   | 316 SS    | 5/8   | 15.9 | 0.030     | 0.76 | 1500                            | 100'/roll             | 6.2            | 2.8 |   |
| C405G9   | 316 SS    | 5/8   | 15.9 | 0.030     | 0.76 | 1500                            | Green Tote 100'/roll  | 6.9            | 3.1 |   |
| C40699   | 316 SS    | 3/4   | 19.1 | 0.030     | 0.76 | 1800                            | 100'/roll             | 7.5            | 3.4 |   |
| C406R9   | 316 SS    | 3/4   | 19.1 | 0.030     | 0.76 | 1800                            | Red Tote 100'/roll    | 8.2            | 3.7 |   |
| C44499   | 316 SS    | 1/2   | 12.7 | 0.015     | 0.38 | 600                             | 200'/roll             | 5.7            | 2.6 |   |
| C444B9   | 316 SS    | 1/2   | 12.7 | 0.015     | 0.38 | 600                             | Blue Tote 200'/roll   | 5.8            | 2.7 |   |
| C44599   | 316 SS    | 5/8   | 15.9 | 0.015     | 0.38 | 750                             | 200'/roll             | 6.7            | 3.0 |   |
| C445G9   | 316 SS    | 5/8   | 15.9 | 0.015     | 0.38 | 750                             | Green Tote 200'/roll  | 6.9            | 3.1 |   |
| C44699   | 316 SS    | 3/4   | 19.1 | 0.015     | 0.38 | 900                             | 200'/roll             | 8.3            | 3.8 |   |
| C446R9   | 316 SS    | 3/4   | 19.1 | 0.015     | 0.38 | 900                             | Red Tote 200'/roll    | 8.4            | 3.8 |   |

These products available in Mill coil.

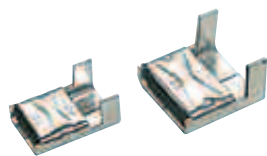
† The J02069 tool can be used with 3/16" and 3/8" wide product.

## 316 Stainless Steel Coated Band

|        |        |     |      |         |        |      |            |     |     |                            |
|--------|--------|-----|------|---------|--------|------|------------|-----|-----|----------------------------|
| AE4329 | 316 SS | 1/4 | 6.4  | 0.048** | 1.22** | 335  | 82.5'/roll | 2.0 | 0.9 | C07569<br>C08569<br>C40099 |
| AE4339 | 316 SS | 3/8 | 9.6  | 0.048** | 1.22** | 505  | 82.5'/roll | 2.6 | 1.2 |                            |
| AE4349 | 316 SS | 1/2 | 12.7 | 0.048** | 1.22** | 670  | 82.5'/roll | 3.5 | 1.6 |                            |
| AE4359 | 316 SS | 5/8 | 15.9 | 0.048** | 1.22** | 840  | 82.5'/roll | 4.4 | 2.0 |                            |
| AE4369 | 316 SS | 3/4 | 19.1 | 0.048** | 1.22** | 1000 | 82.5'/roll | 5.3 | 2.4 |                            |

\*\*Material thickness includes PPA 571 coating - Base material thickness is 0.015".

## 316 Stainless Steel Clip



| Part No. | Material* | Width |      | Package Quantity | Package Weight |     |
|----------|-----------|-------|------|------------------|----------------|-----|
|          |           | In    | mm   |                  | Lbs            | Kg  |
| AE4529   | 316 SS    | 1/4   | 6.4  | 100/box          | 0.3            | 0.1 |
| AE4539   | 316 SS    | 3/8   | 9.6  | 100/box          | 0.6            | 0.3 |
| AE4549   | 316 SS    | 1/2   | 12.7 | 100/box          | 1.0            | 0.4 |
| AE4559   | 316 SS    | 5/8   | 15.9 | 100/box          | 1.1            | 0.5 |
| AE4569   | 316 SS    | 3/4   | 19.1 | 100/box          | 1.3            | 0.6 |



# Ball-Lok Ties

## Manufactured from Type 316 and Type 304 Stainless Steel

- Self-Locking operation for speedy application
- Two widths - .18" (4.6mm) and .31" (7.9mm)
- Type 316 Stainless Steel available with selectively coated Nylon 11 or uncoated styles available
- Smooth I.D.



Install Ball-Lok stainless steel ties quickly and easily with the lightweight, portable Ball-Lok Tool with automatic cut-off. Or, use one of the hand tools readily available on the market, or simply tighten by hand.



(.31 widths)

### Ball-Lok Tie

| Part No. | Material* | Width  |       | Length |      | Base Material Thickness |       | Maximum Diameter Single Wrap |      | Minimum Loop Tensile Strength (Lbs) | Package Quantity | Package Weight |     | Application Tools |                      |
|----------|-----------|--------|-------|--------|------|-------------------------|-------|------------------------------|------|-------------------------------------|------------------|----------------|-----|-------------------|----------------------|
|          |           | In     | mm    | In     | mm   | In                      | mm    | In                           | mm   |                                     |                  | Lbs            | Kg  |                   |                      |
| KE1128   | -         | 304 SS | 0.180 | 4.6    | 7.9  | 201                     | 0.010 | 0.25                         | 2.0  | 50                                  | 200              | 100/bag        | 0.6 | 0.3               | K50289<br>or by hand |
| KE1138   | -         | 304 SS | 0.180 | 4.6    | 10.2 | 259                     | 0.010 | 0.25                         | 2.7  | 69                                  | 200              | 100/bag        | 0.7 | 0.4               |                      |
| KE1148   | -         | 304 SS | 0.180 | 4.6    | 14.2 | 360                     | 0.010 | 0.25                         | 4.0  | 102                                 | 200              | 100/bag        | 0.9 | 0.5               |                      |
| KE1158   | -         | 304 SS | 0.180 | 4.6    | 20.4 | 520                     | 0.010 | 0.25                         | 6.0  | 152                                 | 200              | 100/bag        | 1.3 | 0.6               |                      |
| KE1168   | -         | 304 SS | 0.180 | 4.6    | 26.8 | 679                     | 0.010 | 0.25                         | 8.0  | 203                                 | 200              | 100/bag        | 1.8 | 0.8               |                      |
| KE1178   | -         | 304 SS | 0.180 | 4.6    | 33.0 | 838                     | 0.010 | 0.25                         | 10.0 | 254                                 | 200              | 100/bag        | 2.1 | 1.0               |                      |
| KE1188   | -         | 304 SS | 0.180 | 4.6    | 42.0 | 1067                    | 0.010 | 0.25                         | 12.0 | 305                                 | 200              | 100/bag        | 2.4 | 1.1               |                      |
| KE0128   | -         | 316 SS | 0.180 | 4.6    | 7.9  | 201                     | 0.010 | 0.25                         | 2.0  | 50                                  | 200              | 100/bag        | 0.6 | 0.3               |                      |
| KE0138   | -         | 316 SS | 0.180 | 4.6    | 10.2 | 259                     | 0.010 | 0.25                         | 2.7  | 69                                  | 200              | 100/bag        | 0.7 | 0.4               |                      |
| KE0148   | -         | 316 SS | 0.180 | 4.6    | 14.2 | 360                     | 0.010 | 0.25                         | 4.0  | 102                                 | 200              | 100/bag        | 0.9 | 0.5               |                      |
| KE0158   | -         | 316 SS | 0.180 | 4.6    | 20.4 | 520                     | 0.010 | 0.25                         | 6.0  | 152                                 | 200              | 100/bag        | 1.3 | 0.6               |                      |
| KE0168   | -         | 316 SS | 0.180 | 4.6    | 26.8 | 679                     | 0.010 | 0.25                         | 8.0  | 203                                 | 200              | 100/bag        | 1.8 | 0.8               |                      |
| KE0178   | -         | 316 SS | 0.180 | 4.6    | 33.0 | 838                     | 0.010 | 0.25                         | 10.0 | 254                                 | 200              | 100/bag        | 2.1 | 1.0               |                      |
| KE0188   | -         | 316 SS | 0.180 | 4.6    | 42.0 | 1067                    | 0.010 | 0.25                         | 12.0 | 305                                 | 200              | 100/bag        | 2.4 | 1.1               |                      |
| KE1328   | -         | 304 SS | 0.310 | 7.9    | 7.9  | 201                     | 0.010 | 0.25                         | 2.0  | 50                                  | 300              | 100/bag        | 1.0 | 0.5               |                      |
| KE1338   | -         | 304 SS | 0.310 | 7.9    | 10.2 | 259                     | 0.010 | 0.25                         | 2.7  | 69                                  | 300              | 100/bag        | 1.3 | 0.6               |                      |
| KE1348   | -         | 304 SS | 0.310 | 7.9    | 14.2 | 360                     | 0.010 | 0.25                         | 4.0  | 102                                 | 300              | 100/bag        | 1.7 | 0.8               |                      |
| KE1358   | -         | 304 SS | 0.310 | 7.9    | 20.4 | 520                     | 0.010 | 0.25                         | 6.0  | 152                                 | 300              | 100/bag        | 2.2 | 1.1               |                      |
| KE1368   | -         | 304 SS | 0.310 | 7.9    | 26.8 | 679                     | 0.010 | 0.25                         | 8.0  | 203                                 | 300              | 100/bag        | 2.9 | 1.3               |                      |
| KE1378   | -         | 304 SS | 0.310 | 7.9    | 33.0 | 838                     | 0.010 | 0.25                         | 10.0 | 254                                 | 300              | 100/bag        | 3.5 | 1.6               |                      |
| KE1388   | -         | 304 SS | 0.310 | 7.9    | 42.0 | 1067                    | 0.010 | 0.25                         | 12.0 | 305                                 | 300              | 100/bag        | 4.6 | 2.1               |                      |
| KE0328   | -         | 316 SS | 0.310 | 7.9    | 7.9  | 201                     | 0.010 | 0.25                         | 2.0  | 50                                  | 300              | 100/bag        | 1.0 | 0.5               |                      |
| KE0338   | -         | 316 SS | 0.310 | 7.9    | 10.2 | 259                     | 0.010 | 0.25                         | 2.7  | 69                                  | 300              | 100/bag        | 1.3 | 0.6               |                      |
| KE0348   | -         | 316 SS | 0.310 | 7.9    | 14.2 | 360                     | 0.010 | 0.25                         | 4.0  | 102                                 | 300              | 100/bag        | 1.7 | 0.8               |                      |
| KE0358   | -         | 316 SS | 0.310 | 7.9    | 20.4 | 520                     | 0.010 | 0.25                         | 6.0  | 152                                 | 300              | 100/bag        | 2.2 | 1.1               |                      |
| KE0368   | -         | 316 SS | 0.310 | 7.9    | 26.8 | 679                     | 0.010 | 0.25                         | 8.0  | 203                                 | 300              | 100/bag        | 2.9 | 1.3               |                      |
| KE0378   | -         | 316 SS | 0.310 | 7.9    | 33.0 | 838                     | 0.010 | 0.25                         | 10.0 | 254                                 | 300              | 100/bag        | 3.5 | 1.6               |                      |
| KE0388   | -         | 316 SS | 0.310 | 7.9    | 42.0 | 1067                    | 0.010 | 0.25                         | 12.0 | 305                                 | 300              | 100/bag        | 4.6 | 2.1               |                      |
| -        | KE0828    | 316 SS | 0.310 | 7.9    | 7.9  | 201                     | 0.010 | 0.25                         | 2.0  | 50                                  | 300              | 100/bag        | 1.2 | 0.6               |                      |
| -        | KE0848    | 316 SS | 0.310 | 7.9    | 14.2 | 360                     | 0.010 | 0.25                         | 4.0  | 102                                 | 300              | 100/bag        | 1.8 | 0.9               |                      |
| -        | KE0858    | 316 SS | 0.310 | 7.9    | 20.4 | 520                     | 0.010 | 0.25                         | 6.0  | 152                                 | 300              | 100/bag        | 2.5 | 1.2               |                      |



#### Ball-Lok Tools

| Cat. No. | Description   | Weight |     |
|----------|---|--------|-----|
|          |   | Lb     | Kg  |
| K50289   | Hand tool to apply uncoated and selectively coated Ball-Lok Ties. | .94    | .43 |

\*BAND-IT reserves the right to substitute material with equal or better corrosion resistance and/or mechanical specifications.



# **BAND-IT® Ties**

## **Reusable BAND-IT® Ties**

### **For Cable Bundling in Harsh Environments**

BAND-IT® Ties are available in two different steel material and coatings: 200/300 Stainless Steel coated with Nylon 11 (the AA Series) or 316 Stainless Steel coated with PPA571 (the AE Series). BAND-IT® Ties can also be supplied with no coating.

The unique buckle design provides quick, easy application and can just as easily be unfastened for reuse. BAND-IT® Ties can be tensioned by hand or by using a BAND-IT® Cable Tie Tensioner, Tensioning Hook or Bantam Tool.

Both the Nylon 11 and PPA571 coatings have excellent chemical and weathering resistance which is unaffected by U.V. Extremely flexible even at low temperatures, these coatings protect cable from damage or interference due to direct contact with stainless steel. The PPA571 thicker coating and smooth edges offers an additional corrosion resistance combined with higher protection for cables and hands.

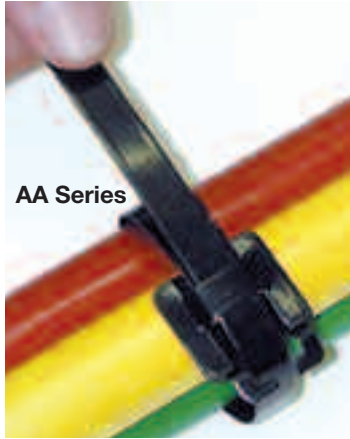


AA Series



AE Series





**BAND-IT® Tie**  
**200/300 Stainless Steel BAND-IT® Tie Nylon 11 coated**

| Part No. | Material* | Width |      | Length |     | Thickness Coated |      | Maximum Diameter Single Wrap |     | Minimum Loop Tensile Strength | Package Quantity | Package Weight |     |
|----------|-----------|-------|------|--------|-----|------------------|------|------------------------------|-----|-------------------------------|------------------|----------------|-----|
|          |           | In    | mm   | In     | mm  | In               | mm   | In                           | mm  |                               |                  | Lbs            | Kg  |
| AA1118   | 200/300SS | 1/4   | 6.4  | 6.0    | 152 | 0.026            | 0.66 | 1.5                          | 38  | 75/300**                      | 100/bag          | 1.4            | 0.6 |
| AA1128   | 200/300SS | 1/4   | 6.4  | 9.0    | 229 | 0.026            | 0.66 | 2.5                          | 63  | 75/300**                      | 100/bag          | 1.8            | 0.8 |
| AA1138   | 200/300SS | 1/4   | 6.4  | 12.0   | 305 | 0.026            | 0.66 | 3.4                          | 86  | 75/300**                      | 100/bag          | 2.1            | 1.0 |
| AA1148   | 200/300SS | 1/4   | 6.4  | 18.0   | 457 | 0.026            | 0.66 | 5.4                          | 137 | 75/300**                      | 100/bag          | 3.0            | 1.4 |
| AA1158   | 200/300SS | 1/4   | 6.4  | 24.0   | 610 | 0.026            | 0.66 | 7.3                          | 185 | 75/300**                      | 100/bag          | 3.7            | 1.7 |
| AA3118   | 200/300SS | 3/8   | 9.6  | 6.0    | 152 | 0.026            | 0.66 | 1.5                          | 38  | 100/500**                     | 100/bag          | 1.8            | 0.8 |
| AA3128   | 200/300SS | 3/8   | 9.6  | 9.0    | 229 | 0.026            | 0.66 | 2.5                          | 63  | 100/500**                     | 100/bag          | 2.5            | 1.1 |
| AA3138   | 200/300SS | 3/8   | 9.6  | 12.0   | 305 | 0.026            | 0.66 | 3.4                          | 86  | 100/500**                     | 100/bag          | 3.1            | 1.4 |
| AA3148   | 200/300SS | 3/8   | 9.6  | 18.0   | 457 | 0.026            | 0.66 | 5.4                          | 137 | 100/500**                     | 100/bag          | 4.4            | 2.2 |
| AA3158   | 200/300SS | 3/8   | 9.6  | 24.0   | 610 | 0.026            | 0.66 | 7.3                          | 185 | 100/500**                     | 100/bag          | 6.6            | 3.0 |
| AA3168   | 200/300SS | 3/8   | 9.6  | 30.0   | 762 | 0.026            | 0.66 | 9.1                          | 231 | 100/500**                     | 100/bag          | 7.0            | 3.2 |
| AA3178   | 200/300SS | 3/8   | 9.6  | 36.0   | 914 | 0.026            | 0.66 | 11.0                         | 280 | 100/500**                     | 100/bag          | 8.3            | 3.8 |
| AA8638   | 200/300SS | 5/8   | 15.9 | 12.0   | 305 | 0.044            | 1.1  | 3.4                          | 86  | 200/800**                     | 100/bag          | 5.6            | 2.5 |
| AA8648   | 200/300SS | 5/8   | 15.9 | 18.0   | 457 | 0.044            | 1.1  | 5.4                          | 137 | 200/800**                     | 100/bag          | 7.6            | 3.5 |
| AA8658   | 200/300SS | 5/8   | 15.9 | 24.0   | 610 | 0.044            | 1.1  | 7.3                          | 185 | 200/800**                     | 100/bag          | 9.7            | 4.4 |
| AA8668   | 200/300SS | 5/8   | 15.9 | 30.0   | 762 | 0.044            | 1.1  | 9.1                          | 231 | 200/800**                     | 100/bag          | 11.9           | 5.4 |
| AA8678   | 200/300SS | 5/8   | 15.9 | 36.0   | 914 | 0.044            | 1.1  | 11.0                         | 280 | 200/800**                     | 100/bag          | 13.9           | 6.4 |

\*\*Single/Double Wrapped

Material thickness includes Nylon 11 coating - Base material thicknesses uncoated: 1/4" is 0.015"; 3/8" is 0.015"; 5/8" is 0.020  
 PART NUMBER CHANGE - AA Series (Nylon 11 BAND-IT Ties) formerly AE part number series.



(5/8" widths)

**316 Stainless Steel BAND-IT® Tie PPA571 coated**

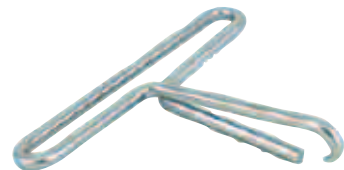
| Part No. | Material* | Width |     | Length |     | Thickness Coated |     | Maximum Diameter Single Wrap |     | Minimum Loop Tensile Strength | Package Quantity | Package Weight |     |
|----------|-----------|-------|-----|--------|-----|------------------|-----|------------------------------|-----|-------------------------------|------------------|----------------|-----|
|          |           | In    | mm  | In     | mm  | In               | mm  | In                           | mm  |                               |                  | Lbs            | Kg  |
| AE1118   | 316SS     | 1/4   | 6.4 | 6.0    | 152 | 0.045            | 1.1 | 1.5                          | 38  | 75/300**                      | 100/bag          | 1.4            | 0.6 |
| AE1128   | 316SS     | 1/4   | 6.4 | 9.0    | 229 | 0.045            | 1.1 | 2.5                          | 63  | 75/300**                      | 100/bag          | 1.8            | 0.8 |
| AE1138   | 316SS     | 1/4   | 6.4 | 12.0   | 305 | 0.045            | 1.1 | 3.4                          | 86  | 75/300**                      | 100/bag          | 2.1            | 1.0 |
| AE1148   | 316SS     | 1/4   | 6.4 | 18.0   | 457 | 0.045            | 1.1 | 5.4                          | 137 | 75/300**                      | 100/bag          | 3.0            | 1.4 |
| AE1158   | 316SS     | 1/4   | 6.4 | 24.0   | 610 | 0.045            | 1.1 | 7.3                          | 185 | 75/300**                      | 100/bag          | 3.7            | 1.7 |
| AE3118   | 316SS     | 3/8   | 9.6 | 6.0    | 152 | 0.045            | 1.1 | 1.5                          | 38  | 100/500**                     | 100/bag          | 1.8            | 0.8 |
| AE3128   | 316SS     | 3/8   | 9.6 | 9.0    | 229 | 0.045            | 1.1 | 2.5                          | 63  | 100/500**                     | 100/bag          | 2.5            | 1.1 |
| AE3138   | 316SS     | 3/8   | 9.6 | 12.0   | 305 | 0.045            | 1.1 | 3.4                          | 86  | 100/500**                     | 100/bag          | 3.1            | 1.4 |
| AE3148   | 316SS     | 3/8   | 9.6 | 18.0   | 457 | 0.045            | 1.1 | 5.4                          | 137 | 100/500**                     | 100/bag          | 4.4            | 2.2 |
| AE3158   | 316SS     | 3/8   | 9.6 | 24.0   | 610 | 0.045            | 1.1 | 7.3                          | 185 | 100/500**                     | 100/bag          | 6.6            | 3.0 |
| AE3168   | 316SS     | 3/8   | 9.6 | 30.0   | 762 | 0.045            | 1.1 | 9.1                          | 231 | 100/500**                     | 100/bag          | 7.0            | 3.2 |
| AE3178   | 316SS     | 3/8   | 9.6 | 36.0   | 914 | 0.045            | 1.1 | 11.0                         | 280 | 100/500**                     | 100/bag          | 8.3            | 3.8 |

\*\*Single/Double Wrapped

Material thickness includes PPA coating - Base material thicknesses uncoated: 1/4" is 0.015"; 3/8" is 0.015"; 5/8" is 0.020  
 Low smoke, non-toxic, zero halogen, PPA coated with superior corrosion resistance.



**Cable Tie Tensioner**



**Tensioning Hook**



**Bantam Tool**

**Cable Tie Tensioner**

Pkg Qty 1

| Cat. No. | Description                                     | Weight |    |
|----------|---|--------|----|
|          |   | Lbs    | Kg |
| AE2009   | For Tensioning BAND-IT® Ties and Multi-Lok Ties | .6     | .3 |

**Tensioning Hook**

Pkg Qty 1

|        |   |    |     |
|--------|---|----|-----|
| AE2018 | For Tensioning BAND-IT® Ties and Multi-Lok Ties | .1 | .05 |
|--------|---|----|-----|

**Bantam Tool C075**

| Cat. No. | Description  | Weight |     |
|----------|--|--------|-----|
|          |  | Lbs    | Kg  |
| C07569   | 3-way handle version for one-hand pistol grip or two-hand tensioning | 2.6    | 1.2 |

\*BAND-IT reserves the right to substitute material with equal or better corrosion resistance and/or mechanical specifications.



# TIE-LOK®

## Smooth I.D. Clamping Products

Strong, safe, low-profile permanent single wrap ties. Fireproof, resistant to corrosion, UV light and temperature extremes. Apply with a choice of hand-operated or pneumatic tools. Tie-Lok® II Tools form a unique, patented dimple lock with a strong locking

force - 250 lbs.(130 Kg) for Tie-Lok®, 100 lbs. (45 Kg) for Mini Tie-Lok®. Ultra-Lok® tool forms patented Ultra-Lok® cut-off for a minimum loop tensile strength of 400 lbs (181 Kg).

**Smooth I.D. Tie-Lok® and Mini Tie-Lok® Ties** - Use either A910 or A920 hand tools or A352 or A353 pneumatic tools. Smooth I.D. Ultra-Lok® Ties - Use A940 hand tool or A350 pneumatic tool.

**Universal Clamp** - A single wrap, preformed, smooth I.D. clamp for either Tie-Lok® or Ultra-Lok® termination. For Tie-Lok®, use A920 or A353 tool. For Ultra-Lok® use A940 or A350 tool.



### Tie-Lok® Tie

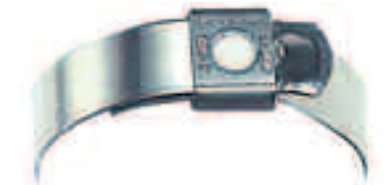
| Part No. | Material* | Width |     | Length |     | Thickness |      | Maximum Diameter Single Wrap |     | Minimum Loop Tensile Strength (Lbs) |         | Package Quantity | Package Weight |                  | Application Tools |
|----------|-----------|-------|-----|--------|-----|-----------|------|------------------------------|-----|-------------------------------------|---------|------------------|----------------|------------------|-------------------|
|          |           | In    | mm  | In     | mm  | In        | mm   | In                           | mm  | Lbs                                 | Kg      |                  |                |                  |                   |
| AS2119   | 304 SS    | 1/4   | 6.4 | 10.0   | 254 | 0.015     | 0.38 | 2                            | 51  | 250                                 | 100/bag | 1.2              | 0.6            | A92079<br>IT1000 |                   |
| AS2129   | 304 SS    | 1/4   | 6.4 | 16.5   | 419 | 0.015     | 0.38 | 4                            | 101 | 250                                 | 100/bag | 1.8              | 0.9            |                  |                   |
| AS2139   | 304 SS    | 1/4   | 6.4 | 22.5   | 572 | 0.015     | 0.38 | 6                            | 152 | 250                                 | 100/bag | 2.6              | 1.2            |                  |                   |
| AS2149   | 304 SS    | 1/4   | 6.4 | 29.0   | 737 | 0.015     | 0.38 | 8                            | 203 | 250                                 | 100/bag | 3.3              | 1.5            |                  |                   |
| AS2159   | 304 SS    | 1/4   | 6.4 | 35.0   | 889 | 0.015     | 0.38 | 10                           | 254 | 250                                 | 100/bag | 3.9              | 1.8            |                  |                   |
| AS4119   | 316 SS    | 1/4   | 6.4 | 10.0   | 254 | 0.015     | 0.38 | 2                            | 51  | 250                                 | 100/bag | 1.2              | 0.6            |                  |                   |
| AS4129   | 316 SS    | 1/4   | 6.4 | 16.5   | 419 | 0.015     | 0.38 | 4                            | 101 | 250                                 | 100/bag | 1.8              | 0.9            |                  |                   |
| AS4139   | 316 SS    | 1/4   | 6.4 | 22.5   | 572 | 0.015     | 0.38 | 6                            | 152 | 250                                 | 100/bag | 2.6              | 1.2            |                  |                   |
| AS4149   | 316 SS    | 1/4   | 6.4 | 29.0   | 737 | 0.015     | 0.38 | 8                            | 203 | 250                                 | 100/bag | 3.3              | 1.5            |                  |                   |
| AS4159   | 316 SS    | 1/4   | 6.4 | 35.0   | 889 | 0.015     | 0.38 | 10                           | 254 | 250                                 | 100/bag | 3.9              | 1.8            |                  |                   |
| AS6219   | 304 SS    | 3/8   | 9.6 | 7.2    | 184 | 0.020     | 0.51 | 1.5                          | 40  | 350                                 | 100/bag | 1.9              | 0.9            | IT6000<br>TL3800 |                   |
| AS6229   | 304 SS    | 3/8   | 9.6 | 10.0   | 254 | 0.020     | 0.51 | 2                            | 51  | 350                                 | 100/bag | 2.6              | 1.2            |                  |                   |
| AS6239   | 304 SS    | 3/8   | 9.6 | 16.0   | 406 | 0.020     | 0.51 | 4                            | 101 | 350                                 | 100/bag | 3.9              | 1.8            |                  |                   |
| AS6249   | 304 SS    | 3/8   | 9.6 | 22.5   | 572 | 0.020     | 0.51 | 6                            | 152 | 350                                 | 100/bag | 5.3              | 2.4            |                  |                   |
| AS6259   | 304 SS    | 3/8   | 9.6 | 29.0   | 737 | 0.020     | 0.51 | 8                            | 203 | 350                                 | 100/bag | 6.7              | 3.1            |                  |                   |



**Smooth I.D. Tie-Lok® Ties** - Use either A910 or A920 hand tools or A352 or A353 pneumatic tools.



**Smooth I.D. Ultra-Lok® Ties** - Use A940 hand tool or A350 pneumatic tool.



**Universal Clamp** - A single wrap, preformed, smooth I.D. clamp for either Tie-Lok® or Ultra-Lok® termination. For Tie-Lok®, use A920 or A353 tool. For Ultra-Lok® use A940 or A350 tool.

### Mini Tie-Lok® Tie

| Part No. | Material* | Width |     | Length |     | Thickness |      | Maximum Diameter Single Wrap |     | Minimum Loop Tensile Strength (Lbs) |         | Package Quantity | Package Weight |                  | Application Tools |
|----------|-----------|-------|-----|--------|-----|-----------|------|------------------------------|-----|-------------------------------------|---------|------------------|----------------|------------------|-------------------|
|          |           | In    | mm  | In     | mm  | In        | mm   | In                           | mm  | Lbs                                 | Kg      |                  |                |                  |                   |
| AS2219   | 304 SS    | 0.177 | 4.5 | 7.0    | 165 | 0.015     | 0.38 | 1                            | 25  | 100                                 | 100/bag | 0.7              | 0.3            | A91079<br>IT0750 |                   |
| AS2229   | 304 SS    | 0.177 | 4.5 | 10.0   | 254 | 0.015     | 0.38 | 2                            | 51  | 100                                 | 100/bag | 0.9              | 0.4            |                  |                   |
| AS2239   | 304 SS    | 0.177 | 4.5 | 16.0   | 406 | 0.015     | 0.38 | 4                            | 102 | 100                                 | 100/bag | 1.4              | 0.7            |                  |                   |
| AS2249   | 304 SS    | 0.177 | 4.5 | 22.5   | 572 | 0.015     | 0.38 | 6                            | 152 | 100                                 | 100/bag | 1.9              | 0.9            |                  |                   |
| AS2259   | 304 SS    | 0.177 | 4.5 | 29.0   | 737 | 0.015     | 0.38 | 8                            | 203 | 100                                 | 100/bag | 2.4              | 1.1            |                  |                   |
| AS4219   | 316 SS    | 0.177 | 4.5 | 7.0    | 165 | 0.015     | 0.38 | 1                            | 25  | 100                                 | 100/bag | 0.7              | 0.3            |                  |                   |
| AS4229   | 316 SS    | 0.177 | 4.5 | 10.0   | 254 | 0.015     | 0.38 | 2                            | 51  | 100                                 | 100/bag | 0.9              | 0.4            |                  |                   |
| AS4239   | 316 SS    | 0.177 | 4.5 | 16.0   | 406 | 0.015     | 0.38 | 4                            | 102 | 100                                 | 100/bag | 1.4              | 0.7            |                  |                   |
| AS4249   | 316 SS    | 0.177 | 4.5 | 22.5   | 572 | 0.015     | 0.38 | 6                            | 152 | 100                                 | 100/bag | 1.9              | 0.9            |                  |                   |
| AS4259   | 316 SS    | 0.177 | 4.5 | 29.0   | 737 | 0.015     | 0.38 | 8                            | 203 | 100                                 | 100/bag | 2.4              | 1.1            |                  |                   |

**Color Tags**, including the additional dimension of **COLOR**. Add **HIGH VISIBILITY** to your identification message.



**TL3800 Tie-Lok® Tool**  
New for 3/8"  
Tie-Lok® only



**A92079 Tie-Lok® II Tool**  
Adjustable tension, forms  
lock, cuts off tail.



**A91079 Mini Tie-Lok® II Tool**  
Adjustable tension, forms lock,  
cuts off tail.



**A94079 Ultra-Lok® Tool**  
Adjustable tension, forms lock,  
cuts off tail.



**IT1000**  
**Heavy Duty Pneumatic Tool**

A heavy duty tool for applying all 1/4" ties, bands and clamps. Provides extended service life with less maintenance. Feature include heavy duty cut-off and tensioning components, a long-life valving system, easier access to maintenance components and lower line pressure requirements.

### Ultra-Lok® Tie

| Part No. | Material* | Width |     | Length |     | Thickness |      | Maximum Diameter Single Wrap |     | Minimum Loop Tensile Strength (Lbs) | Package Quantity | Package Weight |     | Application Tools |
|----------|-----------|-------|-----|--------|-----|-----------|------|------------------------------|-----|-------------------------------------|------------------|----------------|-----|-------------------|
|          |           | In    | mm  | In     | mm  | In        | mm   | In                           | mm  |                                     |                  | Lbs            | Kg  |                   |
| AU2029   | 201 SS    | 1/4   | 6.4 | 8      | 203 | 0.015     | 0.38 | 1.5                          | 38  | 400                                 | 100/bag          | 1.0            | 0.5 | A94079<br>IT3000  |
| AU2039   | 201 SS    | 1/4   | 6.4 | 10     | 254 | 0.015     | 0.38 | 2.5                          | 63  | 400                                 | 100/bag          | 1.2            | 0.6 |                   |
| AU2049   | 201 SS    | 1/4   | 6.4 | 12     | 305 | 0.015     | 0.38 | 3.0                          | 76  | 400                                 | 100/bag          | 1.4            | 0.7 |                   |
| AU2059   | 201 SS    | 1/4   | 6.4 | 14     | 356 | 0.015     | 0.38 | 3.8                          | 96  | 400                                 | 100/bag          | 1.6            | 0.8 |                   |
| AU2069   | 201 SS    | 1/4   | 6.4 | 16     | 406 | 0.015     | 0.38 | 4.5                          | 114 | 400                                 | 100/bag          | 1.9            | 0.9 |                   |
| AU2079   | 201 SS    | 1/4   | 6.4 | 19     | 483 | 0.015     | 0.38 | 5.4                          | 137 | 400                                 | 100/bag          | 2.2            | 1.0 |                   |
| AU2089   | 201 SS    | 1/4   | 6.4 | 24     | 610 | 0.015     | 0.38 | 7.0                          | 177 | 400                                 | 100/bag          | 2.7            | 1.3 |                   |
| AU2099   | 201 SS    | 1/4   | 6.4 | 29     | 737 | 0.015     | 0.38 | 8.0                          | 215 | 400                                 | 100/bag          | 3.3            | 1.5 |                   |
| AU2159   | 201 SS    | 1/4   | 6.4 | 35     | 889 | 0.015     | 0.38 | 10.5                         | 266 | 400                                 | 100/bag          | 3.9            | 1.8 |                   |

### Universal Clamp

| Part No. | Material* | Width |     | Thickness |      | Inside Diameter |     | Package Quantity | Package Weight |     | Application Tools                    |
|----------|-----------|-------|-----|-----------|------|-----------------|-----|------------------|----------------|-----|--------------------------------------|
|          |           | In    | mm  | In        | mm   | In              | mm  |                  | Lbs            | Kg  |                                      |
| JU2428   | 201 SS    | 1/4   | 6.4 | 0.015     | 0.38 | 1               | 25  | 100/box          | 1.2            | 0.6 | A92079<br>A94079<br>IT1000<br>IT3000 |
| JU2528   | 201 SS    | 1/4   | 6.4 | 0.015     | 0.38 | 1-1/2           | 38  | 100/box          | 1.4            | 0.7 |                                      |
| JU2538   | 201 SS    | 1/4   | 6.4 | 0.015     | 0.38 | 2               | 51  | 100/box          | 1.7            | 0.8 |                                      |
| JU2548   | 201 SS    | 1/4   | 6.4 | 0.015     | 0.38 | 2-1/2           | 64  | 100/box          | 1.9            | 0.9 |                                      |
| JU2568   | 201 SS    | 1/4   | 6.4 | 0.015     | 0.38 | 3               | 76  | 100/box          | 2.2            | 1.0 |                                      |
| JU2578   | 201 SS    | 1/4   | 6.4 | 0.015     | 0.38 | 3-1/2           | 89  | 100/box          | 2.4            | 1.1 |                                      |
| JU2588   | 201 SS    | 1/4   | 6.4 | 0.015     | 0.38 | 4               | 102 | 100/box          | 2.6            | 1.2 |                                      |
| JU2598   | 201 SS    | 1/4   | 6.4 | 0.015     | 0.38 | 4-1/2           | 114 | 100/box          | 2.7            | 1.3 |                                      |

### Hand Tools

| Cat. No. | Description | Weight |    |
|----------|-------------|--------|----|
|          |             | Lbs    | Kg |

#### Tie-Lok® II Tool

|        |   |     |     |
|--------|---|-----|-----|
| A92079 | Hand tool to apply Smooth I.D. Tie-Lok® Ties. Easy to use tool includes adjustable tension, locks tie with the patented dual lock and cuts off band flush with top surface of buckle. | .94 | .43 |
|--------|---|-----|-----|

#### Mini Tie-Lok® II Tool

|        |  |     |     |
|--------|--|-----|-----|
| A91079 | Hand tool to apply Smooth I.D. Mini Tie-Lok® Ties. Easy to use tool includes adjustable tension, locks tie with the patented dual lock and cuts off band flush with top surface of buckle. | .94 | .43 |
|--------|--|-----|-----|

#### Tie-Lok® Tool 3/8" only

|        |   |     |     |
|--------|---|-----|-----|
| TL3800 | Hand tool to apply Smooth I.D. 3/8" Tie-Lok® Tie only. Easy to use tool provides repeatable preset tension. Locks with punch to dimple, cuts off band flush with top surface of buckle. | .94 | .43 |
|--------|---|-----|-----|

#### Ultra-Lok® Tool

|        |   |     |     |
|--------|---|-----|-----|
| A94079 | Hand tool to apply Smooth I.D. Ultra-Lok® Ties, Smooth I.D. Tie-Lok® Ties and Single Wrap BAND-IT Jr.® Smooth I.D. Preformed Clamps. Easy to use tool includes adjustable tension and locks tie with patented Ultra-Lok® cut-off for increased loop tensile strength. | .94 | .43 |
|--------|---|-----|-----|

### Pneumatic Tools

| Cat. No. | Description   | Weight |     |
|----------|---|--------|-----|
|          |   | Lbs    | Kg  |
| IT1000   | Heavy Duty Tool For All 1/4" Tie-Lok® Ties Bands and Clamps             | 3.9    | 1.8 |
| IT0750   | Heavy Duty Tool For All .177" wide mini-Tie-Lok® Ties, Bands and Clamps | 3.9    | 1.8 |

\*BAND-IT reserves the right to substitute material with equal or better corrosion resistance and/or mechanical specifications.





# BAND-FAST™

**BAND-FAST™** is ready to use band, pre-cut and pre-assembled with a clip, buckle or seal. Pre-assembled product gives you an edge over your competition as it saves up to 30% time and labor costs for your large projects. Wherever you traditionally use Band & Buckle, or have a need for innovative products, **BAND-FAST™** can do the job faster and with less scrap material! **BAND-FAST™** is available in many materials including: Monel®, Inconel®, AL6XN®, Titanium, AL2003™, 316SS and others upon request.



**Determining the correct length for BAND-FAST™ products**

When determining the correct product length, **BAND-FAST™** is measured from end to end.

## BAND-FAST™ Precut and Assembled with Clip

| Part No. | Material* | Width |      | Thickness |      | Length |     | Maximum Diameter |             |               |     | Package Quantity | Package Weight |     | Application Tools                               |
|----------|-----------|-------|------|-----------|------|--------|-----|------------------|-------------|---------------|-----|------------------|----------------|-----|---|
|          |           | In    | mm   | In        | mm   | In     | cm  | Single Wrap      | Double Wrap | In            | mm  |                  | Lbs            | Kg  |   |
| L20399   | 201 SS    | 1/4   | 6.4  | 0.020     | 0.51 | 10     | 25  | 2                | 50          | not suggested |     | 100/box          | 2.2            | 0.9 | C00169<br>C00369<br>C07569<br>J02069+<br>C40099 |
| L20499   | 201 SS    | 1/4   | 6.4  | 0.020     | 0.51 | 16     | 40  | 3-1/2            | 88          | 1-1/2         | 38  | 100/box          | 3.1            | 1.4 |   |
| L20799   | 201 SS    | 1/4   | 6.4  | 0.020     | 0.51 | 19     | 48  | 5                | 127         | 2-1/2         | 63  | 100/box          | 3.5            | 1.6 |   |
| L20899   | 201 SS    | 1/4   | 6.4  | 0.020     | 0.51 | 26     | 68  | 7                | 177         | 3-1/2         | 88  | 100/box          | 4.6            | 2.1 |   |
| L21099   | 201 SS    | 1/4   | 6.4  | 0.020     | 0.51 | 34     | 86  | 9                | 228         | 4-1/2         | 114 | 100/box          | 5.6            | 2.6 |   |
| L22199   | 201 SS    | 3/8   | 9.6  | 0.025     | 0.64 | 16     | 40  | 3-1/2            | 88          | 1-1/2         | 38  | 100/box          | 6.2            | 2.8 |   |
| L22999   | 201 SS    | 3/8   | 9.6  | 0.025     | 0.64 | 44     | 112 | 12               | 305         | 6             | 152 | 25/box           | 3.6            | 1.6 |   |
| L24299   | 201 SS    | 1/2   | 12.7 | 0.030     | 0.76 | 18     | 45  | 4                | 102         | 2             | 50  | 100/box          | 10.5           | 4.8 |   |
| L24699   | 201 SS    | 1/2   | 12.7 | 0.030     | 0.76 | 31     | 78  | 8                | 203         | 4             | 101 | 25/box           | 4.7            | 2.1 |   |
| L26399   | 201 SS    | 5/8   | 15.9 | 0.030     | 0.76 | 21     | 53  | 5                | 127         | 2-1/2         | 63  | 100/box          | 15.1           | 6.8 |   |
| L27199   | 201 SS    | 5/8   | 15.9 | 0.030     | 0.76 | 56     | 142 | 16               | 406         | 8             | 203 | 25/box           | 9.0            | 4.1 |   |
| L27399   | 201 SS    | 5/8   | 15.9 | 0.030     | 0.76 | 69     | 508 | 20               | 508         | 10            | 175 | 25/box           | 10.7           | 4.8 |   |
| L28499   | 201 SS    | 3/4   | 19.1 | 0.030     | 0.76 | 24     | 60  | 6                | 152         | 3             | 76  | 50/box           | 10.9           | 4.9 |   |
| L28899   | 201 SS    | 3/4   | 19.1 | 0.030     | 0.76 | 37     | 93  | 10               | 254         | 5             | 127 | 25/box           | 7.6            | 3.5 |   |
| L29099   | 201 SS    | 3/4   | 19.1 | 0.030     | 0.76 | 50     | 127 | 14               | 355         | 7             | 177 | 25/box           | 9.7            | 4.4 |   |
| L29299   | 201 SS    | 3/4   | 19.1 | 0.030     | 0.76 | 62     | 157 | 18               | 457         | 9             | 228 | 25/box           | 11.6           | 5.3 |   |

\* The J02069 can be used with 3/8" maximum width product.

## BAND-FAST™ Precut and Assembled with Ear-Lokt Buckle

| Part No.       | Material* | Width |      | Thickness |      | Length |     | Maximum Diameter |             |     |     | Package Quantity | Application Tools                    |
|----------------|-----------|-------|------|-----------|------|--------|-----|------------------|-------------|-----|-----|------------------|--------------------------------------|
|                |           | In    | mm   | In        | mm   | In     | cm  | Single Wrap      | Double Wrap | In  | mm  |                  |                                      |
| BFES-A0830-020 | 201 SS    | 1/2   | 12.7 | 0.030     | 0.76 | 20     | 51  | 4                | 102         | 2   | 51  | 25/box           | C00169<br>C00369<br>C07569<br>C40099 |
| BFES-A0830-024 | 201 SS    | 1/2   | 12.7 | 0.030     | 0.76 | 24     | 61  | 5                | 127         | 2.5 | 64  | 25/box           |                                      |
| BFES-A0830-027 | 201 SS    | 1/2   | 12.7 | 0.030     | 0.76 | 27     | 69  | 6                | 152         | 3   | 76  | 25/box           |                                      |
| BFES-A0830-034 | 201 SS    | 1/2   | 12.7 | 0.030     | 0.76 | 34     | 86  | 8                | 203         | 4   | 102 | 25/box           |                                      |
| BFES-A0830-041 | 201 SS    | 1/2   | 12.7 | 0.030     | 0.76 | 41     | 104 | 10               | 254         | 5   | 127 | 25/box           |                                      |
| BFES-A0830-048 | 201 SS    | 1/2   | 12.7 | 0.030     | 0.76 | 48     | 122 | 12               | 305         | 6   | 152 | 25/box           |                                      |
| BFES-A0830-055 | 201 SS    | 1/2   | 12.7 | 0.030     | 0.76 | 55     | 140 | 14               | 356         | 7   | 178 | 25/box           |                                      |
| BFES-A0830-069 | 201 SS    | 1/2   | 12.7 | 0.030     | 0.76 | 69     | 175 | 18               | 457         | 9   | 229 | 25/box           |                                      |
| BFES-A0830-076 | 201 SS    | 1/2   | 12.7 | 0.030     | 0.76 | 76     | 193 | 20               | 508         | 10  | 254 | 15/box           |                                      |
| BFES-A0830-090 | 201 SS    | 1/2   | 12.7 | 0.030     | 0.76 | 90     | 229 | 24               | 610         | 12  | 305 | 15/box           |                                      |
| BFES-A1230-020 | 201 SS    | 3/4   | 19.1 | 0.030     | 0.76 | 20     | 51  | 4                | 102         | 2   | 51  | 25/box           |                                      |
| BFES-A1230-024 | 201 SS    | 3/4   | 19.1 | 0.030     | 0.76 | 24     | 61  | 5                | 127         | 2.5 | 64  | 25/box           |                                      |
| BFES-A1230-027 | 201 SS    | 3/4   | 19.1 | 0.030     | 0.76 | 27     | 69  | 6                | 152         | 3   | 76  | 25/box           |                                      |
| BFES-A1230-034 | 201 SS    | 3/4   | 19.1 | 0.030     | 0.76 | 34     | 86  | 8                | 203         | 4   | 102 | 25/box           |                                      |
| BFES-A1230-041 | 201 SS    | 3/4   | 19.1 | 0.030     | 0.76 | 41     | 104 | 10               | 254         | 5   | 127 | 25/box           |                                      |
| BFES-A1230-048 | 201 SS    | 3/4   | 19.1 | 0.030     | 0.76 | 48     | 122 | 12               | 305         | 6   | 152 | 25/box           |                                      |
| BFES-A1230-055 | 201 SS    | 3/4   | 19.1 | 0.030     | 0.76 | 55     | 140 | 14               | 356         | 7   | 178 | 25/box           |                                      |
| BFES-A1230-069 | 201 SS    | 3/4   | 19.1 | 0.030     | 0.76 | 69     | 175 | 18               | 457         | 9   | 229 | 25/box           |                                      |
| BFES-A1230-076 | 201 SS    | 3/4   | 19.1 | 0.030     | 0.76 | 76     | 193 | 20               | 508         | 10  | 254 | 15/box           |                                      |
| BFES-A1230-090 | 201 SS    | 3/4   | 19.1 | 0.030     | 0.76 | 90     | 229 | 24               | 610         | 12  | 305 | 15/box           |                                      |

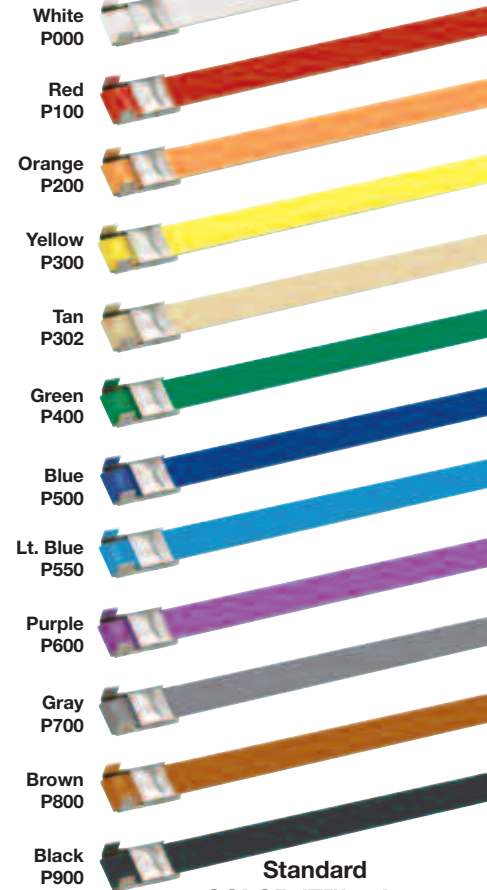
### BAND-FAST™

is now available in standard pre-determined lengths as well as custom lengths and materials. Call for special quote.



# COLOR-IT™ Polyester

COLOR-IT™ coatings are available in a variety of colors and types providing superior performance and manufactured with your specific application in mind. Whether you are color-matching decorative light poles, identifying materials, or matching existing hardware on specific projects, COLOR-IT™ has the right coating for your project needs. Products coated with COLOR-IT™ work with standard banding tools.



## Roll Band with COLOR-IT™ - Polyester

| Part No.    | Material* | Width |      | Thickness |      | Package Quantity | Package Weight |     | Color    | RAL# | Application Tools                              |
|-------------|-----------|-------|------|-----------|------|------------------|----------------|-----|----------|------|--|
|             |           | In    | mm   | In        | mm   |                  | Lbs.           | Kg  |          |      |  |
| C204C9-P000 | 201SS     | 1/2   | 12.7 | 0.030     | 0.76 | 100'/roll        | 5.1            | 2.3 | White    | 9016 | C00169<br>C00369<br>C07569<br>C08569<br>C40099 |
| C204C9-P100 | 201SS     | 1/2   | 12.7 | 0.030     | 0.76 | 100'/roll        | 5.1            | 2.3 | Red      | 3001 |  |
| C204C9-P200 | 201SS     | 1/2   | 12.7 | 0.030     | 0.76 | 100'/roll        | 5.1            | 2.3 | Orange   | 2008 |  |
| C204C9-P300 | 201SS     | 1/2   | 12.7 | 0.030     | 0.76 | 100'/roll        | 5.1            | 2.3 | Yellow   | 1018 |  |
| C204C9-P302 | 201SS     | 1/2   | 12.7 | 0.030     | 0.76 | 100'/roll        | 5.1            | 2.3 | Tan      | 1001 |  |
| C204C9-P400 | 201SS     | 1/2   | 12.7 | 0.030     | 0.76 | 100'/roll        | 5.1            | 2.3 | Green    | 6032 |  |
| C204C9-P500 | 201SS     | 1/2   | 12.7 | 0.030     | 0.76 | 100'/roll        | 5.1            | 2.3 | Blue     | 5002 |  |
| C204C9-P550 | 201SS     | 1/2   | 12.7 | 0.030     | 0.76 | 100'/roll        | 5.1            | 2.3 | Lt. Blue | 5012 |  |
| C204C9-P600 | 201SS     | 1/2   | 12.7 | 0.030     | 0.76 | 100'/roll        | 5.1            | 2.3 | Purple   | 4008 |  |
| C204C9-P700 | 201SS     | 1/2   | 12.7 | 0.030     | 0.76 | 100'/roll        | 5.1            | 2.3 | Gray     | 7036 |  |
| C204C9-P800 | 201SS     | 1/2   | 12.7 | 0.030     | 0.76 | 100'/roll        | 5.1            | 2.3 | Brown    | 8002 |  |
| C204C9-P900 | 201SS     | 1/2   | 12.7 | 0.030     | 0.76 | 100'/roll        | 5.1            | 2.3 | Black    | 9004 |  |
| C206C9-P900 | 201SS     | 3/4   | 19.1 | 0.030     | 0.76 | 100'/roll        | 7.6            | 3.4 | Black    | 9004 |  |

Standard COLOR-IT™ colors

## Ear-Lokt Buckles with COLOR-IT™ - Polyester

| Part No.    | Material* | Width |      | Package Quantity | Package Weight |     | Color | RAL# | Application Tools |
|-------------|-----------|-------|------|------------------|----------------|-----|-------|------|-------------------|
|             |           | In    | mm   |                  | Lbs.           | Kg  |       |      |                   |
| C25499-D900 | 201SS     | 1/2   | 12.7 | 100/box          | 1.7            | 0.8 | Black | 9004 | C00169, C00369    |
| C25699-D900 | 201SS     | 3/4   | 19.1 | 100/box          | 3.5            | 1.6 | Black | 9004 | C07569, C08569    |



BAND-IT Can Match Any Color. Call for Quote.



Roll Band with COLOR-IT™ Polyester

## BAND-FAST™ with Ear-Lokt Buckle with COLOR-IT™ - Polyester

| Part No.              | Material* | Width |      | Thickness |      | Length |     | Maximum Diameter |             | Package Quantity | Color | Application Tools |        |
|-----------------------|-----------|-------|------|-----------|------|--------|-----|------------------|-------------|------------------|-------|-------------------|--------|
|                       |           | In    | mm   | In        | mm   | In     | cm  | Single Wrap      | Double Wrap |                  |       |                   |        |
|                       |           | In    | mm   | In        | mm   | In     | mm  | In               | mm          |                  |       |                   |        |
| BFES-A0830-020-P900C† | 201 SS    | 1/2   | 12.7 | 0.030     | 0.76 | 20     | 51  | 4                | 102         | 2                | 51    | 25/box            | Black† |
| BFES-A0830-024-P900C† | 201 SS    | 1/2   | 12.7 | 0.030     | 0.76 | 24     | 61  | 5                | 127         | 2.5              | 64    | 25/box            | Black† |
| BFES-A0830-027-P900C† | 201 SS    | 1/2   | 12.7 | 0.030     | 0.76 | 27     | 69  | 6                | 152         | 3                | 76    | 25/box            | Black† |
| BFES-A0830-034-P900C† | 201 SS    | 1/2   | 12.7 | 0.030     | 0.76 | 34     | 86  | 8                | 203         | 4                | 102   | 25/box            | Black† |
| BFES-A0830-041-P900C† | 201 SS    | 1/2   | 12.7 | 0.030     | 0.76 | 41     | 104 | 10               | 254         | 5                | 127   | 25/box            | Black† |
| BFES-A0830-048-P900C† | 201 SS    | 1/2   | 12.7 | 0.030     | 0.76 | 48     | 122 | 12               | 305         | 6                | 152   | 25/box            | Black† |
| BFES-A0830-055-P900C† | 201 SS    | 1/2   | 12.7 | 0.030     | 0.76 | 55     | 140 | 14               | 356         | 7                | 178   | 25/box            | Black† |
| BFES-A0830-069-P900C† | 201 SS    | 1/2   | 12.7 | 0.030     | 0.76 | 69     | 175 | 18               | 457         | 9                | 229   | 25/box            | Black† |
| BFES-A0830-076-P900C† | 201 SS    | 1/2   | 12.7 | 0.030     | 0.76 | 76     | 193 | 20               | 508         | 10               | 254   | 15/box            | Black† |
| BFES-A0830-090-P900C† | 201 SS    | 1/2   | 12.7 | 0.030     | 0.76 | 90     | 229 | 24               | 610         | 12               | 305   | 15/box            | Black† |
| BFES-A0830-020-P900C  | 201 SS    | 3/4   | 19.1 | 0.030     | 0.76 | 20     | 51  | 4                | 102         | 2                | 51    | 25/box            | Black  |
| BFES-A1230-024-P900C  | 201 SS    | 3/4   | 19.1 | 0.030     | 0.76 | 24     | 61  | 5                | 127         | 2.5              | 64    | 25/box            | Black  |
| BFES-A1230-027-P900C  | 201 SS    | 3/4   | 19.1 | 0.030     | 0.76 | 27     | 69  | 6                | 152         | 3                | 76    | 25/box            | Black  |
| BFES-A1230-034-P900C  | 201 SS    | 3/4   | 19.1 | 0.030     | 0.76 | 34     | 86  | 8                | 203         | 4                | 102   | 25/box            | Black  |
| BFES-A1230-041-P900C  | 201 SS    | 3/4   | 19.1 | 0.030     | 0.76 | 41     | 104 | 10               | 254         | 5                | 127   | 25/box            | Black  |
| BFES-A1230-048-P900C  | 201 SS    | 3/4   | 19.1 | 0.030     | 0.76 | 48     | 122 | 12               | 305         | 6                | 152   | 25/box            | Black  |
| BFES-A1230-055-P900C  | 201 SS    | 3/4   | 19.1 | 0.030     | 0.76 | 55     | 140 | 14               | 356         | 7                | 178   | 25/box            | Black  |
| BFES-A1230-069-P900C  | 201 SS    | 3/4   | 19.1 | 0.030     | 0.76 | 69     | 175 | 18               | 457         | 9                | 229   | 25/box            | Black  |
| BFES-A1230-076-P900C  | 201 SS    | 3/4   | 19.1 | 0.030     | 0.76 | 76     | 193 | 20               | 508         | 10               | 254   | 15/box            | Black  |
| BFES-A1230-090-P900C  | 201 SS    | 3/4   | 19.1 | 0.030     | 0.76 | 90     | 229 | 24               | 610         | 12               | 305   | 15/box            | Black  |



Ear-Lokt Buckle with COLOR-IT™ Black Polyester



BAND-FAST™ with COLOR-IT™ Black Polyester

†BAND-FAST™ in 1/2" wide 201 SS is also available in other COLOR-IT™ colors and buckle configurations. Please call for more information.

\*BAND-IT reserves the right to substitute material with equal or better corrosion resistance and/or mechanical specifications.



# Identification Systems

Print your own tags on Type 304 or Type 316 stainless steel and apply with Tie-Lok® Ties. Tag imprinter is available with a choice of character sizes. Imprinter with character wheel weighs 29.5 lbs. (13.4kg).



**Coming Soon!**  
New ID tags with **COLOR-IT™** colors and an expanded range of sizes and styles

I.D. Tag Imprinter Tool

## ID Tag Imprinter Tool

| Part No. | Tool supplied with:   |
|----------|-----------------------|
| ID2026   | 1/16" character wheel |
| ID2006   | 3/32" character wheel |
| ID2036   | 1/8" character wheel  |
| ID2046   | 3/16" character wheel |
| ID2056   | 1/4" character wheel  |

## Optional Letter Dial Kits

| Part No. | Kit supplied with:    |
|----------|-----------------------|
| ID2816   | 1/16" character wheel |
| ID2906   | 3/32" character wheel |
| ID2826   | 1/8" character wheel  |
| ID2836   | 3/16" character wheel |
| ID2846   | 1/4" character wheel  |

## ID2859 ID Guide Accessory

Fixture that enables imprinting on Stainless Steel Bands up to 3/4" x 0.030". Weight: 0.5 Lbs. (.02 Kg)

## ID Tags

| Part No. | Material* | Height | Length | Thickness |      | Package Quantity | Package Weight |     |
|----------|-----------|--------|--------|-----------|------|------------------|----------------|-----|
|          |           |        |        | In        | mm   |                  | Lb             | Kg  |
| ID1009   | 304 SS    | 0.75   | 2.0    | 0.015     | 0.38 | 100/box          | 0.5            | 0.2 |
| ID1029   | 304 SS    | 0.75   | 3.5    | 0.015     | 0.38 | 100/box          | 0.8            | 0.4 |
| ID1019   | 304 SS    | 1.50   | 2.5    | 0.015     | 0.38 | 100/box          | 1.2            | 0.6 |
| ID4409   | 316 SS    | 0.75   | 2.0    | 0.015     | 0.38 | 100/box          | 0.5            | 0.2 |
| ID4429   | 316 SS    | 0.75   | 3.5    | 0.015     | 0.38 | 100/box          | 0.8            | 0.4 |
| ID4419   | 316 SS    | 1.50   | 2.5    | 0.015     | 0.38 | 100/box          | 1.2            | 0.6 |

## Custom Embossed Tags

| Part No. | Material* | Height | Length | Thickness |      | Package Quantity | Package Weight |     |
|----------|-----------|--------|--------|-----------|------|------------------|----------------|-----|
|          |           |        |        | In        | mm   |                  | Lbs            | Kg  |
| ID1039   | 304 SS    | 0.75   | 2.0    | 0.015     | 0.38 | each             | 0.1            | 0.1 |
| ID1059   | 304 SS    | 0.75   | 3.5    | 0.015     | 0.38 | each             | 0.1            | 0.1 |
| ID1049   | 304 SS    | 1.50   | 2.5    | 0.015     | 0.38 | each             | 0.2            | 0.1 |
| ID4609   | 316 SS    | 0.75   | 2.0    | 0.015     | 0.38 | each             | 0.1            | 0.1 |
| ID4629   | 316 SS    | 0.75   | 3.5    | 0.015     | 0.38 | each             | 0.1            | 0.1 |
| ID4619   | 316 SS    | 1.50   | 2.5    | 0.015     | 0.38 | each             | 0.2            | 0.1 |

## Stainless Steel Tape Embossing System

| Part No. | Description   | Package Quantity | Package Weight |     |
|----------|---|------------------|----------------|-----|
|          |   |                  | Lbs            | Kg  |
| ID4002   | Stainless Steel Tape Embossing Tool includes 2 rolls of SS tape | each             | 2.6            | 1.2 |
| ID4059   | 304 SS Tape Roll for Embossing Tool, 1/2" x 21' x 0.005"        | each             | 0.2            | 0.4 |

With the portable tape embossing tool and a roll of stainless steel tape, you can quickly and easily produce I.D. tags with 3/16" letter size which can be attached with your choice of BAND-IT® ties.

## ID Kit ID3009

- An assortment of blank ID tags to use with the ID Tagging System. Also, includes various Tie-Lok® ties and Tie-Lok® tool for tag fastening.

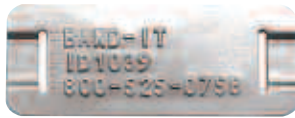
- Package Weight: 22.7 Lbs (10.3 Kg)
- Kit Contains: 1-A92079, 2-ID1029, 1-ID1019, 1-ID1009, 1-AS2119, 2-AS2129, 1-AS2139.



ID1029



ID1049



ID1039

Customized Embossed Tags available with 1/8" lettering only.



ID4002



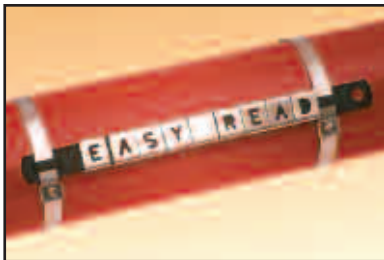
Custom Embossing Factory Service



ID Kit ID3009

## EASY READ Identification Systems

- Type 316 Stainless Steel.
- Easy to read in dim light and inaccessible places.
- Complete range of individual letters, numbers, and symbols.
- EASY CARRIERS are fastened with a variety of BAND-IT® cable ties.
- Slide directly onto cable ties to create a self-contained wrap tag.
- EASY STRIPS are used to create your own carrier in multiple colors for identification.
- Contact us for color availability.



**EASY CARRIERS** can be attached with any 1/4" tie. (Tie-Lok® shown)



**EASY READ** characters slide onto any 3/8" tie. ( Multi-Lok tie left, BAND-IT® tie right)

Pre-punched hole or Band slot in **EASY CARRIER** allows insertion of Mini Tie-Lok® to make a flag tag.



### EASY READ Characters

| Part No. | Description       | Package Quantity | Package Weight |     |
|----------|-------------------|------------------|----------------|-----|
|          |                   |                  | Lbs.           | Kg  |
| AE0109   | EASY A            | 100/bag          | 0.3            | 0.2 |
| AE0119   | EASY B            | 100/bag          | 0.3            | 0.2 |
| AE0129   | EASY C            | 100/bag          | 0.3            | 0.2 |
| AE0139   | EASY D            | 100/bag          | 0.3            | 0.2 |
| AE0149   | EASY E            | 100/bag          | 0.3            | 0.2 |
| AE0159   | EASY F            | 100/bag          | 0.3            | 0.2 |
| AE0169   | EASY G            | 100/bag          | 0.3            | 0.2 |
| AE0179   | EASY H            | 100/bag          | 0.3            | 0.2 |
| AE0189   | EASY I, 1         | 100/bag          | 0.3            | 0.2 |
| AE0199   | EASY J            | 100/bag          | 0.3            | 0.2 |
| AE0209   | EASY K            | 100/bag          | 0.3            | 0.2 |
| AE0219   | EASY L, 7         | 100/bag          | 0.3            | 0.2 |
| AE0229   | EASY M, W         | 100/bag          | 0.3            | 0.2 |
| AE0239   | EASY N            | 100/bag          | 0.3            | 0.2 |
| AE0249   | EASY O            | 100/bag          | 0.3            | 0.2 |
| AE0259   | EASY P            | 100/bag          | 0.3            | 0.2 |
| AE0269   | EASY Q            | 100/bag          | 0.3            | 0.2 |
| AE0279   | EASY R            | 100/bag          | 0.3            | 0.2 |
| AE0289   | EASY S            | 100/bag          | 0.3            | 0.2 |
| AE0299   | EASY T            | 100/bag          | 0.3            | 0.2 |
| AE0309   | EASY U            | 100/bag          | 0.3            | 0.2 |
| AE0319   | EASY V            | 100/bag          | 0.3            | 0.2 |
| AE0329   | EASY X            | 100/bag          | 0.3            | 0.2 |
| AE0339   | EASY Y            | 100/bag          | 0.3            | 0.2 |
| AE0349   | EASY Z.           | 100/bag          | 0.3            | 0.2 |
| AE0379   | EASY 2            | 100/bag          | 0.3            | 0.2 |
| AE0389   | EASY 3            | 100/bag          | 0.3            | 0.2 |
| AE0399   | EASY 4            | 100/bag          | 0.3            | 0.2 |
| AE0409   | EASY 5            | 100/bag          | 0.3            | 0.2 |
| AE0419   | EASY 6, 9         | 100/bag          | 0.3            | 0.2 |
| AE0429   | EASY 8            | 100/bag          | 0.3            | 0.2 |
| AE0359   | EASY Minus/Hyphen | 100/bag          | 0.3            | 0.2 |
| AE0369   | EASY Blank        | 100/bag          | 0.3            | 0.2 |
| AE0469   | EASY Plus +       | 100/bag          | 0.3            | 0.2 |
| AE0479   | EASY Earth ±      | 100/bag          | 0.3            | 0.2 |
| AE0489   | EASY Sine ~       | 100/bag          | 0.3            | 0.2 |
| AE0499   | EASY Slash /      | 100/bag          | 0.3            | 0.2 |

**EASY READ Kit AE0609** - An assortment of characters, carriers, and strips in a convenient carry case.

- Weight: 5.60 Lbs (2.54 Kg).
- Kit includes: Carrying case, 50 of each character, carriers and strips.



### Carriers and Strips

| Part No. | Description      | Width |    | Length |     | Package Quantity | Package Weight |     |
|----------|------------------|-------|----|--------|-----|------------------|----------------|-----|
|          |                  | In    | mm | In     | mm  |                  | In             | mm  |
| AE0439   | EASY CARRIER 6   | 0.380 | 10 | 3.6    | 93  | 100/bag          | 0.8            | 0.4 |
| AE0449   | EASY CARRIER 10  | 0.380 | 10 | 5.1    | 131 | 100/bag          | 1.3            | 0.6 |
| AE0459   | EASY CARRIER 16  | 0.380 | 10 | 7.3    | 188 | 100/bag          | 1.5            | 0.7 |
| AE0509   | EASY STRIP Black | 0.380 | 10 | 4.2    | 108 | 100/bag          | 1.0            | 0.5 |
| AE0519   | EASY STRIP Black | 0.380 | 10 | 5.7    | 146 | 100/bag          | 1.4            | 0.6 |
| AE0529   | EASY STRIP Black | 0.380 | 10 | 8.0    | 203 | 100/bag          | 1.9            | 0.9 |

EASY STRIPS are also available coated in PPA 571 in a variety of colors. Contact us.

EASY CARRIERS are available in black Nylon 11 coated Stainless Steel only.





# BAND-IT®

## THE CLAMPING EXPERTS



Tie products listed with the CE mark are suitable for electric purposes and meet the requirements of (LVD) 73/23/EEC.



Underwriters Laboratories Listing BAND-IT-IDEX has UL Listings on the products indicated.



Det Norske Veritas Type Approval BAND-IT Company Ltd, Derbyshire, has Det Norske Veritas Type Approval on the products indicated in the catalog certificate Number E-4464.



The CSA C/US mark signifies that the product meets applicable U.S. and Canadian standards, including those from CSA, CSA America, ANSI, ASME, ASSE, ASTM, NSF and UL.



Indicted products are Coast Guard approved.

### Mechanical Tests

Split mandrel test, shield termination tests, circular torque tests, flex tests, vibration tests, shock tests.

Reference: MIL-C-85049, MIL-STD-1344, MIL-STD-1344A, MIL Standard 901C, Aegis cable terminations systems qualification test requirements.

### Environmental Tests

High temperature aging, low temperature aging, temperature shock, humidity, salt fog, low temperature bend, thermal shock, temperature life. Reference: MIL Standard 810C/810A, MIL-C-38999H.

### Electrical Values (Post Mechanical Environmental)

Continuity, die-electric withstand voltage. Surface transfer impedance/ EMP response. DC resistance (across termination area).

Passed all tests. Details available on request.

### Patents

Many BAND-IT products shown herein are manufactured under one or more of the following U.S. and corresponding foreign patents owned by BAND-IT- IDEX, Inc., a unit of IDEX Corporation. Other patents pending.

|           |           |           |
|-----------|-----------|-----------|
| 4,887,334 | 4,896,402 | 4,928,738 |
| 5,123,456 | 5,127,446 | 5,129,350 |
| 5,303,571 | 5,322,091 | 5,452,523 |
| 5,483,998 | 5,488,760 | 5,566,726 |
| 5,743,310 | 5,850,674 | 6,014,792 |
| 6,260,704 | 6,481,467 | 1,140,648 |

### Trademarks

BAND-IT®, BAND-IT Jr.®, Junior®, BAND-FAST™, COLOR-IT™, Tri-Lok®, Thriftool®, Tie-Lok®, TORQ-LOKT™, Tie-Lok Tool®, Tie-Dex®, Band-Lok®, Self-Lok®, and Ultra-Lok® are registered trademarks owned by BAND-IT- IDEX, Inc., a unit of IDEX Corporation. SET9000™ and VALU-STRAP™ trademarks have been applied for. BAND-IT Trademarks are registered in the U.S. Patent and Trademark Office and in many other countries. For permission to use any BAND-IT logo or image, please contact us at: [info.band-it@idexcorp.com](mailto:info.band-it@idexcorp.com)

### WORLD HEADQUARTERS

#### NORTH AMERICAN OPERATIONS

BAND-IT-IDEX, Inc.

Western Hemisphere Sales and Marketing

Phone: (1) 303-320-4555

Fax: (1) 303-333-6549

Email: [info.BAND-IT@idexcorp.com](mailto:info.BAND-IT@idexcorp.com)

Website: [www.BAND-IT-IDEX.com](http://www.BAND-IT-IDEX.com)

### EUROPEAN OPERATIONS

BAND-IT Company LTD.

Phone: (44) 1246-479479

(44) 1246-479480

Fax: (44) 1246-476324

Email: [EUROPEinfo.BAND-IT@idexcorp.com](mailto:EUROPEinfo.BAND-IT@idexcorp.com)

Website: [www.band-it.co.uk](http://www.band-it.co.uk)

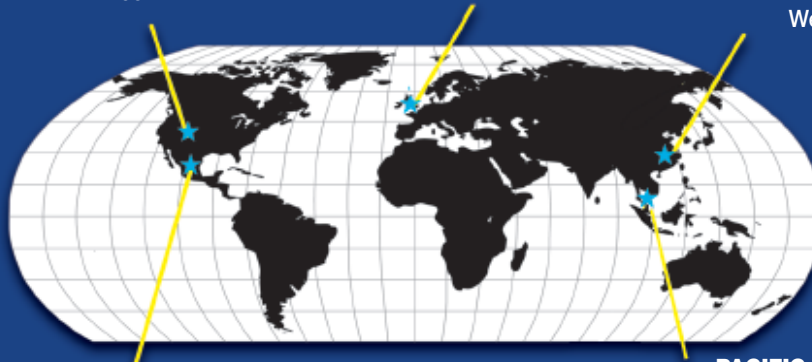
### CHINA SHANGHAI SALES OFFICE

Phone: (86) 21 5241-5599

Fax: (86) 21 5241-8338

Email: [CHINAinfo.BAND-IT@idexcorp.com](mailto:CHINAinfo.BAND-IT@idexcorp.com)

Website: [www.band-it.com.cn](http://www.band-it.com.cn)



### LATIN AMERICAN SALES OFFICE

Phone: (52) 55 5825-8502

Fax: (52) 55 5825-8502

Email: [LAinfo.BAND-IT@idexcorp.com](mailto:LAinfo.BAND-IT@idexcorp.com)

### PACIFIC RIM OPERATIONS

BAND-IT Clamps (Asia) Pte. LTD.

Phone: (65) 6265-8853

(65) 6265-8783

Fax: (65) 6265-8902

Email: [PACIFICRIMinfo.BAND-IT@idexcorp.com](mailto:PACIFICRIMinfo.BAND-IT@idexcorp.com)

Website: [www.band-it-clamps.com](http://www.band-it-clamps.com)