

DRIVEN BY AIR.



dropout®

ALL IN ONE PARTICLE REMOVER



**Water+ in your compressed air?
Dropout is the answer.**

DRIVEN BY AIR.

If you use compressed air, you'll need **dropout®**

to get the best performance from your system

Maintenance free

No consumables

All in one solution

**Suitable for
scalable flow rates**

**No mains power
(for standard units)**

**Significantly lower
life cycle costs**

Dropout® offers an extremely high performance - ALL IN ONE solution. Dropout® removes liquid water and other contaminants at a wide range of flow rates without the need for replacement filter elements - a proven revolution in the treatment of compressed air!

Dropout®'s unique patented system solves contamination problems where other products fail. Robust and reliable performance coupled with particulate removal down to 0.5 microns and without the need for costly replacement consumables equals a significant reduction in whole life costs when compared with traditional air cleaning products.



Save money, save energy, save time

DRY AIR GUARANTEED!

99.99%

LIQUID WATER REMOVAL

Our technology has been subjected to independent tests by recognised test houses such as SGS & IBR; and one of the world's leading droplet and particle measurement companies; Droplet Measurement Technologies (DMT)

ISO 12500

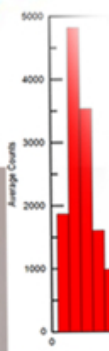
PART 4

A simulated but more demanding test based upon ISO 12500 Part 4 methodology was undertaken by Alvertech Filtration Solutions. Taking into account the tolerance of the measuring equipment used to record the very low weights, the water separation efficiency from the test can be stated as greater than 99.995%

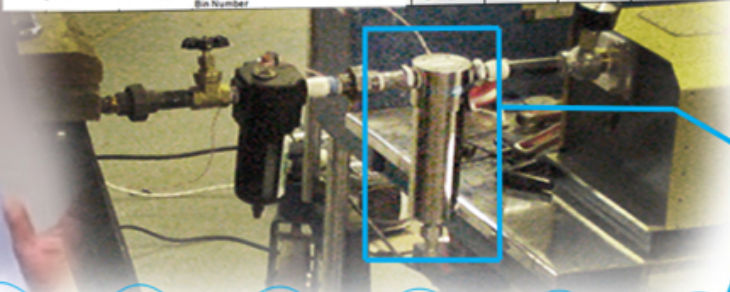
99.9% EFFICIENCY

"With the Dropout in place we had over 1000 fold reduction in droplets. The results were absolutely dramatic"

Dr. Greg Kok
Droplet Measurement
Technologies



Bin 3	Bin 4	Bin 5	Bin 6	Bin 7	Bin 8	Bin 9	Bin 10
4859	1950	1400	888	507	343	281	186
1267	705	499	407	239	188	167	135
3173	842	626	384	346	268	215	167
522	470	243	244	178	135	104	81
515	306	293	232	151	104	71	51



DMT offers expert testing engineering research and consulting services and a world class range of sophisticated instruments for particle measurement. Customers include: Boeing, Bombardier, NASA and many internationally renowned universities and research organisations.

SUMMARY OF INDEPENDENT TESTS

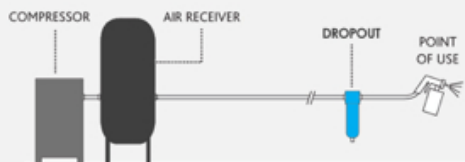
DMT test conditions: 300 l/min at 7 bar.

Result: 99.9+% efficient at removing droplets down to 2 microns.

ISO12500 Part 4 EXPERIMENT: 60 l/min at 7 bar. Water was injected at an average flow rate of 17ml/min (standard specifies only 2ml/min) into the airstream.

Result: 99.99+% liquid water removal efficiency.

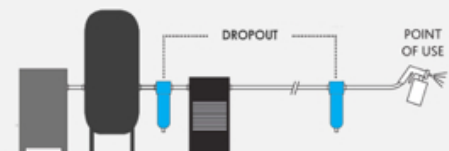
- A** Installed as a 'point of use' filter/liquid water separator where there is no existing provision.



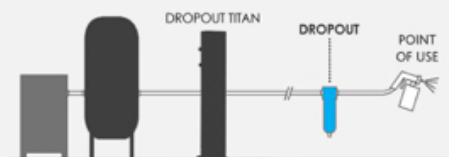
- B** Installed as a supplementary filter/liquid water separator where a dryer is already installed but liquid water is still evident.



- C** Installed as a cost effective alternative to existing water separators/coalescing filters as a single unit upstream of the existing dryer at 'point of use' or both



- D** For high flow applications install Titan to remove the bulk contamination and a compact unit at point of use as a final polisher.

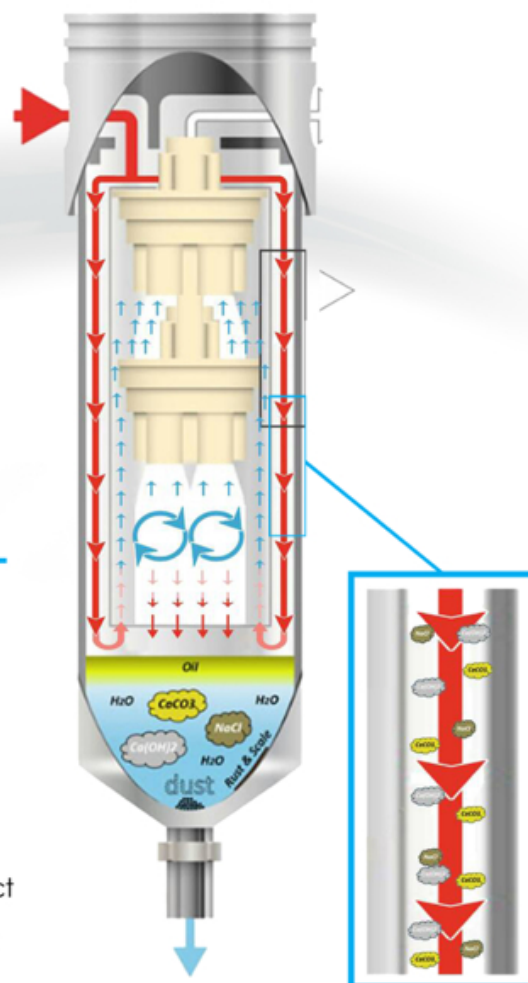


OUR UNIQUE PATENTED SYSTEM

Dropout® has multiple applications acting not only as a stand-alone water separator or coalescing filter but also providing protection upstream of refrigerant dryers by (pre) filtering bulk liquid and other contaminants. Unlike traditional cyclonic separators which rely on constant and stable flows and fail miserably during stop/start, Dropout® has the ability to maintain its performance levels during start up where it reaches optimum performance in a fraction of a second.

TECHNOLOGY AND PERFORMANCE

- Unique patent protected high performance technology.
- No increase in pressure drop caused by blocked filters.
- Performance does not depend on the compressed air having a stable flow rate or high velocity.
- Sealed for life stainless steel housing.
- Modular, scalable design delivers a wide flow rate product range without compromising the efficiency of removal of water and solid particles.
- Operates far more efficiently than traditional air cleaning products.



HOW OUR SYSTEM COMPARES

WITH OTHER RIVAL TECHNOLOGIES

Treatment Technology	Contaminant					Requirements			
	Bulk Liquid Water	Liquid Oil	Water & Oil Aerosols	Solid (dry) Particles	Micro-organisms	No Replacement Elements	No Maintenance	No Power	No Pre &/or Post filtering
Adsorption Filter	x	x	x	x	x	x	x	✓	x
Adsorption Dryer	x	x	x	x	x	x	x	x	x
Refrigeration Dryer	x	x	x	x	x	✓	x	x	x
Water Separator	✓	x	x	x	x	✓	✓	✓	x
Coalescing Filter	x	✓	✓	✓	✓	x	x	✓	x
Dust Removal Filter	x	x	x	✓	✓	x	x	✓	x
Sterile Filter	x	x	x	x	✓	x	x	✓	x
dropout	✓	✓	✓	✓	✓	✓	✓	✓	✓

All the protection you need in one device; instead of having to purchase & maintain a multiplicity of different products.

		COMPACT*		TITAN PORTABLE	TITAN	
Product code		D0200A	D0600A	D0900T8/R	D04000T	D08000T
Flow rate (min-max) (based on 7 bar(g) operating pressure)	scfm	0.04 - 8.8	0.04 - 35	0.04 - 45	0.04 - 203	0.08 - 406
	l/min	1 - 250	1 - 1000	1 - 1275	1 - 5760	2 - 11520
	m³/hr	0.06 - 15	0.06 - 60	0.06 - 76.5	0.06 - 345	0.12 - 690
Water storage	cc	200	500	640	600	1100
Inlet/Outlet connection	BSPT	1/2"	1"	3/4"	1"	2"
Drain connection	BSPT	1/4" (m)	1/2" (m)	1/2" Automatic	3/4" Automatic 3/4" Manual	3/4" Automatic 3/4" Manual
Operating pressure	bar(g)	1 - 15	1 - 15	1 - 15	1 - 15	1 - 15
	psi(g)	15 - 217	15 - 217	15 - 217	15 - 217	15 - 217
Operating temperature	°C	+0 to +80	+0 to +80	+0 to +80	+0 to +80	+0 to +80
	°F	+32 to 176	+32 to 176	+32 to 176	+32 to 176	+32 to 176
Weight	kg	0.69	2.22	9.3	22.5	43.2
Product dimensions	mm	235 x 60 Ø	353 x 93 Ø	520 (H) x 320 (W) x 235 (D)	1200 (H) x 224 (W) x 313 (D)	1350 (H) x 279 (W) x 500 (D)
Particulate removal	microns	1	1	0.5	3	3
Pressure drop		Datasheets available online		See datasheets	Datasheets available online	
Material		Aluminium		Mild steel powder coated RAL 9016	Mild steel powder coated RAL 9016	
Additional options		Auto-drain available online			AC mains or battery powered	

*Stainless steel options available for more specialist applications

		AUTO-DRAIN
Product code		D0AD128
Maximum recommended flow rate	scfm	203
	l/min	5760
	m³/hr	345
Water storage	cc	350
Inlet connection(s)	BSPT	1/2"
Outlet connection	BSPT	1/8"
Operating pressure	bar(g)	1 - 16
	psi(g)	15 - 232
Operating temperature	°C	+0 to +80
	°F	+32 to 176
Weight	kg	0.4
Product dimensions	mm	187 x 70 Ø
Material		Aluminium



PCL dropout[®] PRODUCT RANGE

At source - At point of use - Portable

An overview of our Dropout[®] product range.



ALUMINIUM

An in-line point of use water separator and contaminant remover used in a wide range of applications and flow rates.

- 99.995% Liquid water removal
- Particulate removal down to 1 micron
- No mains power required
- Complements or replaces other water removal equipment
- No consumables
- Easy to clean and install
- We recommend you also install the 'DOAD128' auto-drain for a complete solution



AUTO DRAIN

Automatically removes all liquid, oil and solid contaminants from the Dropout[®] units.

- Dropout[®] quality
- Float operated (no power required)
- Large outlet when compared to other available products
- Small and compact
- Easy to install



TITAN

Dropout Titan has been designed to operate in environments where there is a relatively high flow of air and where efficient bulk liquid water removal is essential.

Titan has 99.999% water removal efficiency and can be installed either a) at point of use or b) down stream of your air receiver tank; in the latter case we recommend fitting a smaller flow rate Dropout unit as a final 'polisher' at point of use.

Titan has an integrated auto drain to ensure that liquid water and contamination is efficiently removed.

Operating at higher flow rates than the Compact product, achieves the same exceptional water separator and solid contaminant remover performance.

- Use in conjunction with other Dropout products in a cost effective 'system' configuration
- Use as a stand-alone product for high flow rate applications
- Auto-drain and pressure gauges fitted as standard

PORTABLE



Where you have a number of applications that you don't use simultaneously, a cost effective option will be to have a water/solid contaminant removal product that you can switch between them. The Dropout Portable Water Separator allows you to do just that - providing even more value for money; as well as providing for applications requiring a portable solution.

- Portability - small and light enough to carry to your point of use
- 'Plug and play' - transfer easily between applications
- Pressure gauges as standard
- Integrated pneumatic auto-drain (no power required)

SUCCESS

ACROSS MULTIPLE INDUSTRIES

Dropout®'s flexibility has been demonstrated across many industries worldwide. Here are just a few examples:



Lafarge Tarmac & Scottish Power

“ Finally, a product that does what it claims and removes water from compressed air systems. After many years of expensive downtime and component replacements in my system I now have clean dry air. ”

Jim Donnelly
Production Manager, ScotAsh Ltd



Offshore industry pneumatic equipment...

“To protect the new pumps we fitted a DO2000S Dropout unit to the existing air inlet. The results have been outstanding, and our client is very impressed with the amount of water that is being removed. The exhaust air coming from the pumps is now effectively completely dry. Our company has been so impressed with the product that we're now fitting them to every piece of pneumatic equipment that we design and build.”

Calum Masson, Director
RESYS Engineering Services Ltd



In the workshop...

“Faced with investing in expensive desiccant or refrigerant units, I looked at the Dropout filter system. This has proven to be an amazing find, giving me clean dry air without the hassle of ongoing maintenance, refrigerant or filter changes. It has not let a single drop of water or contamination through the system and I can't recommend it highly enough to those who value their tools and quality of work.”

Steve Copeland
Flight Instructor & Examiner
Head of Training, Winglider Ltd



On the farm...

“We were experiencing large amounts of liquid water in our workshop airlines and vegetable grading machines. I was told that I needed a refrigerant dryer to solve this water condensate issue. Thanks to Dropout we now have dry air and have eliminated costly down time and pneumatic failures. In addition we have extended the life of our air tools and are now able to clean and reuse air filters on our plant saving us additional unnecessary costs.”

Matthew Jordan
G H Chennells Farms Ltd

“ We installed Dropout one month ago and what an amazing result. We are now operating with a dry system and have saved hours of unnecessary down time. What a great product! ”

Brian Edwards
Newman Cams

“ We are very pleased with the DO600A. It basically does everything it says on the can. Very simple to install and removes all condensate water. ”

Chris Hall
New Forest Stone