



MATERIAL
Transparent polyamide based (PA-T) technopolymer. Avoid contact with alcohol or detergents containing alcohol.

PACKING RING
NBR synthetic rubber.

MAXIMUM CONTINUOUS WORKING TEMPERATURE
100°C.

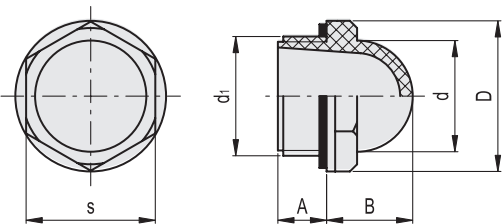
TECHNICAL DATA
The tightening torque indicated in the table guarantees an optimal tightness, keeping the packing ring in the correct position.

NOTE
For use with other fluids with special additives, please contact ELESAs Sales Department.

ACCESSORIES ON REQUEST
Brass nut type GH. (see page 1201) for fitting to reservoirs with wall thickness smaller than 5 mm.



ELESA Original design



Code	Description	d1	A	B	D	d	s	Tightening torque [Nm]	⚖️
10851	HCFE.12-3/8	G 3/8	7.5	13	22.5	15	19	3+5	4
10901	HCFE.15-1/2	G 1/2	10.5	16	26	19	22	4+6	5
11001	HCFE.20-3/4	G 3/4	10.5	19.5	31.5	25	27	6+8	8
11101	HCFE.24-1	G 1	11	24	42	31	36	8+10	18
11111	HCFE.30-1¼	G1 1/4	11.5	26.5	46.5	38	40.5	12+15	22