



#### MATERIAL

Polyamide based (PA) technopolymer, black colour, glossy finish.

#### PRISMATIC WINDOW

Transparent sulphonic based technopolymer. The window consists of a continuous series of prisms which provide a clear and immediate reading of the level of the oil contained in the reservoir.

#### PACKING RING

FKM type VITON®\*.

#### MAXIMUM CONTINUOUS WORKING TEMPERATURE

140°C at 7 bar pressure.

\* Registered trademark by DuPont Dow Elastomers.

#### NOTE

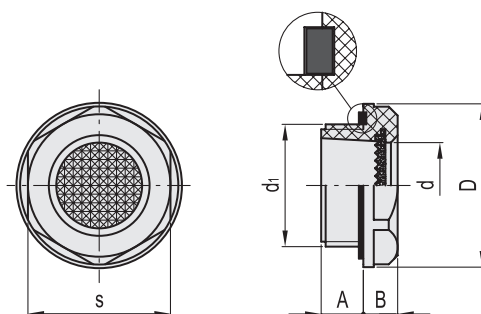
For use with other fluids with special additives, please contact ELESa Sales Department.

#### ACCESSORIES ON REQUEST

Brass nut type GH. (see page 1201) for fitting to reservoirs with wall thickness smaller than 5 mm.



ELESa Original design



Code	Description	d1	A	B	D	d	s	Tightening torque [Nm]	
14463	HGFT.13/HT-PR-1/2	G1/2	10	8.5	28	14.5	24	6*8	5
14483	HGFT.16/HT-PR-3/4	G3/4	9.5	8.5	35	18	32	8*10	9
14523	HGFT.21/HT-PR-1	G1	11	9.5	42.5	23	38	10*12	14