



FLUID & LUBRICATION PRODUCTS



DISTRIBUTED BY:



SAMOA LTD

WESTHOUGHTON

SAMOA Ltd (UK) was established in 1987 as a distribution and marketing company for the United Kingdom and Republic of Ireland.

SAMOA SA were initially a manufacturer of grease nipples and lever grease guns. Now SAMOA has evolved to become one of the worlds leading manufacturers of lubrication equipment.

While keeping in its manufacturing program the products with which SAMOA started its activities, new products are always being developed and added to the SAMOA range. This enables SAMOA to now be one of the largest manufacturers with the widest product program developed and manufactured in its own factories.

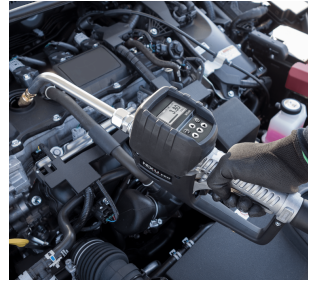
SAMOA products are present in more than 75 countries through a selected network of distributors.

SAMOA Ltd (UK) offers training at our UK site or on location covering a vast range of products from lubrication equipment training to installation and operation of the NEX.U. fluid monitoring equipment, plus much more.

All products are manufactured and assembled at one of SAMOA's SA factories. The latest design, equipment and technology enables SAMOA to keep up to date with market demands.



CONTENTS



®NEX.U. FLUID MANAGEMENT

OIL EQUIPMENT

Air Operated Oil Pumps & Kits
Electric Oil Pumps & Kits
Mobile Oil Dispensers
Hand Operated Oil Pumps

GREASE EQUIPMENT

Air Operated Grease Pumps & Kits
Hand Operated Grease Pumps
Accessories
Grease Nipples & Connectors

DIAPHRAGM & SPECIALITY PUMPS

Polypropylene Diaphragm Pumps
Aluminium Diaphragm Pumps
Accessories
Air Operated Pumps for Other Fluids
Hand Operated Pumps for Other Fluids

ADBLUE EQUIPMENT

Air Operated AdBlue Pumps & Kits
Electric AdBlue Pumps & Kits
Hand Operated AdBlue Pumps & Kits
Accessories

REELS & ACCESSORIES

Open Hose Reels
Single Arm Hose Reels
Enclosed Hose Reels
Heavy-Duty Hose Reels
Compact Hose Reels
Electric Cable Reels
Stainless Steel Reels
Hose Reel Stands & Accessories

03 DISPENSING VALVE & METERS

Oil & Fluid Dispense Valves 43
Mechanical Dispense Valves 44
Oil Bar & In-Line Meters 45
Water Guns & Water-Based Fluid Valves 46
Grease Control Valves 46

WASTE OIL EQUIPMENT

Waste Oil Suction Units 47
Waste Oil Gravity Drainers 48
Speciality Fluid Collection Units 49
Waste Oil Evacuation Pump Kits 50
Accessories 51

DIESEL EQUIPMENT

DC Diesel Pumps & Kits 52
AC Diesel Pumps & Kits 53
Accessories 54

CONSUMABLES

Funnels 55
Measures 55
Drain Pans 56
Fuel & Oil Cans 56
Blow Guns, Wash Guns, Spray Guns 57
Industrial Sprayers 58
Tyre Inflators 58
Air Hoses 58
Air Treatment Units 58

BULK STORAGE TANKS

Totally Enclosed Bunded Storage Tanks 59
Bespoke Storage Tanks 59
Tank Alarms & Accessories 60

NEX.U.® FLUID MANAGEMENT



NEX.U. provides you with the control and the information you require to make your operation more profitable.

You will be able to account for every drop of lubricant and other service fluid used. On top of this, you will carry an efficient inventory control, with automatic alerts.

For almost any lubricant usage or operation size, with today's high cost for these fluids, NEX.U.® quickly pays for itself. Once it is paid for, savings go right to the operation's bottom line in form of profit previously lost.

NEX.U.® is a hybrid system that brings you all the advantages of wireless flexibility and hard-wired reliability.

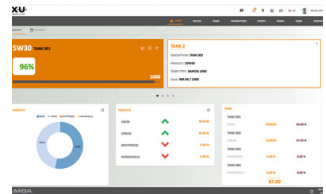


NEX.U.® U.NET CENTRAL PROCESSING UNIT

Controls and manages all components functions and communications, wired or wireless.

NEX.U.® U.TRACK SOFTWARE

Included in the U-net, is the user and system interface. Generates useful reports, keeps control of inventory and can communicate with almost every DM system.



NEX.U.® U.VALVE FLOW CONTROL

All in one flow control unit.

Includes pulse meter, solenoid valve, filter and electronic circuit board for operation control and communication with other system components.

NEX.U.® U.METER PULSE METER

High accuracy pulse meter with LED display is ideal for retro-fitting in existing pipework or workshop cabinets, where space is limited.





NEX.U.® U.DAT+ SYSTEM KEYPAD

With a full colour, touch screen and a full QWERTY keypad provides full access to NEX.U.® and U-track.

NEX.U.® U.VISION CONTROL GUN

Digital control gun which connects via Bluetooth® to the valve for complete accuracy.



NEX.U.® U.VISION+ CONTROL GUN

Digital control gun complete with system keypad, allowing requesting of fluids directly from the gun.

NEX.U.® U.LINK PRO CONTROL GUN

Wireless dispensing meter valve for use with the NEX.U. Pro system. The gun incorporates both the valve and the meter for wireless connection to a U.Net Pro.

Allows technicians to control transactions directly from the gun.



NEX.U.® U.TANK CONTROL MODULE

Provides real-time inventory control and manages different alarm points, in conjunction with tank level sensors.

FOR FURTHER DETAILS VISIT OUR WEBSITE - WWW.SAMOA.LTD.UK

AIR OPERATED OIL PUMPS



1:1 RATIO OIL PUMP

Double acting air operated low pressure pump for transferring lubricants and non-corrosive fluids. Pumps include height adjustable 2" BSP (M) bung adaptor for tank or drum bung mounting. Built-in port for recommended pressure relief valve kit.

Suitable for: transmission fluid, hydraulic oil, synthetic & mineral based lubricants and diesel.

351120 - STUB PUMP

352120 - 205 LITRE DRUM PUMP

3:1 RATIO OIL PUMP

Double acting air operated medium pressure pump for dispensing lubricants from mobile units, oil distribution packages and small systems. Pump includes height adjustable 2" BSP (M) bung adaptor for tank or drum bung mounting. Built-in port for recommended pressure relief valve kit.

Suitable for: transmission fluid, hydraulic oil, synthetic & mineral based lubricants.

353120 - STUB PUMP

354120 - 205 LITRE DRUM PUMP



3:1 & 5:1 RATIO HIGH VOLUME OIL PUMPS

Double acting air operated medium pressure high volume pumps for dispensing lubricants in medium/large sized installations, pump capable of pumping all types of lubricants, even those of high viscosity. Pumps include height adjustable 2" BSP (M) bung adaptor for tank or drum bung mounting. Built-in port for recommended pressure relief valve kit.

Suitable for: transmission fluid, hydraulic oil, synthetic & mineral based lubricants and gear oil.

340120- 3:1 RATIO HV STUB PUMP

341120 - 3:1 RATIO HV FOR 205 LITRE DRUM PUMP

347120 - 5:1 RATIO HV STUB PUMP

348120 - 5:1 RATIO HV FOR 205 LITRE DRUM PUMP

AIR OPERATED OIL PUMPS



PM35 HEAVY-DUTY OIL PUMP

Medium and high pressure heavy-duty pumps for oil distribution applications. Built-in port for recommended pressure relief valve kit.

Suitable for: transmission fluid, gear oil, hydraulic oil and synthetic & mineral based lubricants.

535530 - 5:1 RATIO STUB PUMP

535510 - 5:1 RATIO 205 LITRE DRUM PUMP

535830 - 8:1 RATIO STUB PUMP

535810 - 8:1 RATIO 205 LITRE DRUM PUMP

PM45 HEAVY-DUTY OIL PUMP

Heavy-duty pumps for large volumes/high-delivery applications. Built-in port for recommended pressure relief valve kit.

Suitable for: transmission fluid, gear oil, hydraulic oil and synthetic & mineral based lubricants.

536330 - 3:1 RATIO STUB PUMP

536630 - 6:1 RATIO STUB PUMP

536030 - 10:1 RATIO STUB PUMP

536010 - 10:1 RATIO 205 LITRE DRUM PUMP



PM60 HEAVY-DUTY HIGH-DELIVERY OIL PUMP

Heavy-duty, high-delivery pumps for large installations. Built-in port for recommended pressure relief valve

Suitable for: transmission fluid, gear oil, hydraulic oil and synthetic & mineral based lubricants.

537630 - 6:1 RATIO STUB PUMP

537130 - 12:1 RATIO STUB PUMP

AIR OPERATED OIL PUMP KITS



3:1 & 5:1 TANK MOUNTED PUMP KITS

Pump kit for installation directly into a metal 4ft high tank c/w 3:1 or 5:1 ratio air operated pump c/w pressure relief valve kit

379003.003 - 3:1 RATIO TANK MOUNTED PUMP KIT C/W PRV

379403.003 - 3:1 RATIO HV TANK MOUNTED PUMP KIT C/W PRV

379503.003 - 5:1 RATIO HV TANK MOUNTED PUMP KIT C/W PRV

ALSO AVAILABLE FOR OTHER TANK HEIGHTS

3:1 & 5:1 DRUM MOUNTED PUMP KITS FOR 205 LITRE DRUMS

Pump kit for drum mounting to 205 litre drums c/w 3:1 or 5:1 ratio air operated pump.

379300 - 3:1 RATIO DRUM MOUNTED PUMP KIT FOR 205 LITRE DRUMS

379404 - 3:1 RATIO HV DRUM MOUNTED PUMP KIT FOR 205 LITRE DRUMS

379504 - 5:1 RATIO HV DRUM MOUNTED PUMP KIT FOR 205 LITRE DRUMS



3:1 & 5:1 WALL MOUNTED PUMP KITS FOR 205 LITRE DRUMS

Pump kit for wall mounting for connection to 205 litre drums c/w 3:1 or 5:1 ratio air operated pump.

379000 - 3:1 RATIO WALL MOUNTED PUMP KIT FOR 205 LITRE DRUMS

379400 - 3:1 RATIO HV WALL MOUNTED PUMP KIT FOR 205 LITRE DRUMS

379500 - 5:1 RATIO HV WALL MOUNTED PUMP KIT FOR 205 LITRE DRUMS

AIR OPERATED OIL PUMP KITS



PM35 5:1 & 8:1 TANK MOUNTED PUMP KITS

Heavy-duty pump kit for installation directly into a metal 4ft high tank c/w 5:1 or 8:1 ratio heavy-duty air operated pump.

539531 - 5:1 RATIO TANK MOUNTED PUMP KIT

539831 - 8:1 RATIO TANK MOUNTED PUMP KIT

ALSO AVAILABLE FOR OTHER TANK HEIGHTS

PM35 5:1 & 8:1 DRUM MOUNTED PUMP KITS FOR 205 LITRE DRUMS

Heavy-duty pump kit for drum mounting to 205 litre drums c/w 5:1 or 8:1 ratio air operated pump.

539510- 5:1 RATIO DRUM MOUNTED PUMP KIT FOR 205 LITRE DRUMS

539810 - 8:1 RATIO DRUM MOUNTED PUMP KIT FOR 205 LITRE DRUMS



PM35 5:1 & 8:1 WALL MOUNTED PUMP KITS FOR 205 LITRE DRUMS

Heavy-duty pump kit for wall mounting for connection to 205 litre drums c/w 5:1 or 8:1 ratio heavy-duty air operated pump.

539530 - 5:1 RATIO WALL MOUNTED PUMP KIT FOR 205 LITRE DRUMS

539830 - 8:1 RATIO WALL MOUNTED PUMP KIT FOR 205 LITRE DRUMS

3:1 RATIO OIL PUMP TRANSFER KITS

3:1 DRUM MOUNTED TRANSFER PUMP KIT FOR 205 LITRE DRUMS

3:1 Ratio transfer pump kit for drum mounting to 205 litre drums c/w 3:1 ratio pump, delivery hose and oil control gun.

454111 - 3:1 RATIO TRANSFER PACKAGE FOR 205 LITRE DRUMS



3:1 DRUM MOUNTED TRANSFER METERED PUMP KIT FOR 205 LITRE DRUMS

3:1 Ratio transfer metered pump kit for drum mounting to 205 litre drums c/w 3:1 ratio pump, delivery hose and digital hose end meter.

454110 - 3:1 TRANSFER METERED PACKAGE FOR 205 LITRE DRUMS



3:1 DRUM MOUNTED TRANSFER PUMP WITH SPIGOT VALVE FOR 205 LITRE DRUMS

3:1 ratio transfer pump with spigot valve for drum mounting to 205 litre drums c/w 3:1 ratio pump, oil spigot valve and tray.

454100 - 3:1 TRANSFER PUMP WITH SPIGOT VALVE FOR 205 LITRE DRUMS



3:1 TRANSFER PUMP FOR 1000 LITRE IBC

3:1 ratio transfer pump for side mounting on 1000 litre IBC c/w 3:1 ratio pump, IBC side bracket, delivery hose and digital hose end meter.

454150 - 3:1 RATIO TRANSFER PUMP FOR IBC



3:1 RATIO OIL PUMP PACKAGES

3:1 DRUM MOUNTED PUMP PACKAGE FOR 205 LITRE DRUMS WITH 10M HOSE REEL

3:1 ratio drum mounted pump for 205 litre drums c/w RM-12S 10m hose reel and digital hose end meter.

454605 - DRUM MOUNTED PUMP PACKAGE WITH RM-12S 10M HOSE REEL



3:1 WALL MOUNTED PUMP PACKAGE FOR 205 LITRE DRUMS WITH 10M HOSE REEL AND DRIP POCKET

3:1 ratio wall mounted pump for 205 litre drums c/w RM-12CL 10m enclosed hose reel and digital hose end meter.

454659 - WALL MOUNTED PUMP PACKAGE WITH RM-12CL 10M HOSE REEL AND DRIP POCKET

3:1 TOP MOUNTED PUMP PACKAGE FOR 1000 LITRE IBC WITH 10M HOSE REEL

3:1 ratio top mounted pump for 1000 litre IBC's c/w RM-12S 10m hose reel and digital hose end meter.

454694 - TOP MOUNTED PUMP PACKAGE FOR IBC WITH RM-12S 10M HOSE REEL



3:1 SIDE MOUNTED PUMP PACKAGE FOR 1000 LITRE IBC WITH 10M HOSE REEL

3:1 ratio side mounted pump for 1000 litre IBC's c/w RM-12S 10m hose reel and digital hose end meter.

454699 - SIDE MOUNTED PUMP PACKAGE FOR IBC WITH RM-12S 10M HOSE REEL

OIL EQUIPMENT

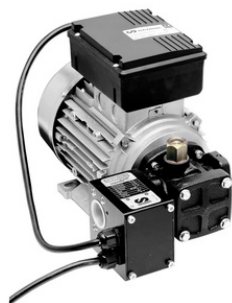
ELECTRIC OIL PUMPS

OIL PUMPS WITH 12V AND 24V DC ELECTRIC MOTOR

External gear pumps with 12v and 24v DC motors with IP55 protection, On/Off switch, fuse and 2m cable with crocodile clips. Pumps can work in intermittent duty cycles of 30 minutes and have built-in by-pass valve.

561012 - 12V DC - 200 WATT - 11.5 BAR - 5.2 LITRE/MIN

561024 - 24V DC - 200 WATT - 12.5 BAR - 5.6 LITRE/MIN



OIL PUMPS WITH 230V AC AND 400V AC MOTORS

Internal gear electric pumps for lubricants. 230v - 50Hz (single phase) or 400v - 50Hz (3 phase) motor depending on model. IP55 protection and On/Off switch. Cast iron pump body, sintered steel gears and by-pass valve.

Models with electronic pressure switch start automatically whenever a pressure drop in the distribution line occurs (i.e. when a delivery gun is opened) and stops once pressure has built-up again in the line (i.e. when a delivery gun is closed).

FOR THE FULL RANGE VISIT OUR WEBSITE - WWW.SAMOA.LTD.UK

HIGH PERFORMANCE OIL PUMPS WITH ELECTRIC MOTOR

High performance external gear pumps directly coupled to an electric motor with IP55 protection for the transfer or distribution of large volumes of lubricants. Pump gears are manufactured in steel and the pump body is manufactured in cast iron. All pumps include adjustable by-pass valve.

FOR THE FULL RANGE VISIT OUR WEBSITE - WWW.SAMOA.LTD.UK



ELECTRIC OIL PUMPS



PORTABLE ELECTRIC OIL PUMP KITS

Pump kits include pump, 3m delivery hose, delivery gun and suction accessories. Available with a choice of 12v DC, 24v DC or 230v AC pumps.

FOR THE FULL RANGE VISIT OUR WEBSITE - WWW.SAMOA.LTD.UK



MOBILE OIL DISPENSER WITH ELECTRIC PUMP FOR 205 LITRE DRUMS

Mobile Oil Dispenser with Flowstar series electric pump. Includes connection accessories, hose end meter and trolley for 205 litre drums.

562100 - MOBILE OIL DISPENSER WITH ELECTRIC PUMP FOR 205 LITRE DRUMS

MOBILE OIL DISPENSERS

25 LITRE PRESSURISED MOBILE OIL DISPENSER

Mobile unit for dispensing viscous lubricants. Includes 25 litre container which needs to be pressurised using a tyre inflator. Includes 1.5m delivery hose and oil control gun or digital hose end meter, depending on option chosen.

324000 - 25 LITRE MOBILE OIL DISPENSER

324010 - 25 LITRE MOBILE OIL DISPENSER WITH METER



SELF-CONTAINED AIR OPERATED MOBILE OIL DISPENSER - 25 LITRE OR 70 LITRE

Mobile unit for dispensing viscous lubricants. Includes either a 25 litre or 70 litre capacity tank, depending on model chosen; 2:1 ratio air operated pump, 1.5m delivery hose and oil control gun or digital hose end meter, depending on model chosen.

327020 - 25 LITRE UNIT WITH OIL CONTROL GUN

328010 - 70 LITRE UNIT WITH DIGITAL HOSE END METER

SELF-CONTAINED HAND OPERATED MOBILE OIL DISPENSER - 25 LITRE OR 70 LITRE

Mobile unit to dispense viscous lubricants. Includes either a 25 litre or 70 litre capacity tank, depending on model chosen; a hand-operated pump and a 1.5m delivery hose with angled spout.

325000 - 25 LITRE UNIT

325010 - 25 LITRE UNIT WITH METER

326000 - 70 LITRE UNIT

326010 - 70 LITRE UNIT WITH METER



MOBILE OIL DISPENSERS

3:1 RATIO AIR OPERATED DRUM MOUNTED MOBILE OIL DISPENSER FOR 205 LITRE DRUMS

Mobile oil dispenser with 3:1 ratio drum mounted pump for 205 litre drums complete with trolley, 3m delivery hose and digital hose end meter.

376300 - MOBILE OIL DISPENSER WITH DRUM MOUNTED PUMP FOR 205 LITRE DRUMS



3:1 RATIO AIR OPERATED TROLLEY MOUNTED MOBILE OIL DISPENSER FOR 205 LITRE DRUMS

Mobile oil dispenser with 3:1 ratio trolley mounted pump for 205 litre drums complete with trolley, 3 m delivery hose and digital hose end meter.

376610 - MOBILE OIL DISPENSER WITH TROLLEY MOUNTED PUMP FOR 205 LITRE DRUMS



3:1 RATIO AIR OPERATED TROLLEY MOUNTED MOBILE OIL DISPENSER FOR 205 LITRE DRUMS WITH 10M HOSE REEL

Mobile oil dispenser with 3:1 ratio trolley mounted pump for 205 litre drums complete with trolley, digital hose end meter and RM-12S 10m hose reel.

378120 - MOBILE OIL DISPENSER WITH TROLLEY MOUNTED PUMP AND 10M HOSE REEL FOR 205 LITRE DRUMS



OIL EQUIPMENT

HAND OPERATED OIL PUMPS

MEDIUM PRESSURE PUMPS

Lever action transfer pumps for high viscosity lubricants. Pump includes 2" BSP height adjustable bung adaptor to fit directly onto drums, covers or containers. Pump with steel suction tube, foot valve and piston with NBR seals. Available for a wide range of container sizes. Accessories also available.

FOR THE FULL RANGE VISIT OUR WEBSITE - WWW.SAMOA.LTD.UK



ROTARY PUMPS

For transfer of light to medium viscosity petroleum based lubricants. Pumps include height adjustable bung adaptor, three-piece suction tube and 1m delivery hose.

308010 - ALUMINIUM ROTARY ACTION DRUM PUMP

308300 - CAST-IRON ROTARY ACTION DRUM PUMP

LEVER ACTION DRUM PUMPS

Lever action drum pumps for the transfer of light lubricants.

304500 - LEVER ACTION DRUM PUMP FOR LIGHT LUBRICANTS

305000 - GC BRANDED LEVER ACTION DRUM PUMP FOR LIGHT LUBRICANTS



HAND OPERATED OIL PUMPS

PLASTIC LEVER PUMP

Lever action pump with a unique toggle mechanism that provides a very smooth operation. Pump is manufactured in polypropylene and includes a 2" BSP bung adaptor with lockable nut, that allows placing the pump in its optimal position for an easier lever action

300009 - PLASTIC LEVER ACTION PUMP WITH NBR SEALS FOR LUBRICANTS

300900 - DELIVERY HOSE - 2 METRE DELIVERY HOSE



OIL BUCKET PUMP

Bucket pump includes a 16 litre leak proof, all steel oval shaped bucket with carrying handle and foot rest for easy handling and stability

320400 - 16 LITRE OIL BUCKET PUMP

OIL SUCTION PUMPS

For lubricant suction and discharge for loading or refilling transmissions, gear boxes, filters, etc.

FOR THE FULL RANGE VISIT OUR WEBSITE - WWW.SAMOA.LTD.UK



AIR OPERATED GREASE PUMPS

PUMPMASTER 3 - 55:1 RATIO GREASE PUMP

55:1 ratio grease pump suitable for 12.5kg to 20kg pails, 50kg drums and 185kg drums.

404100 - FOR 12.5KG TO 20KG PAILS

407200 - FOR 50KG DRUMS

409200 - FOR 185KG DRUMS



PUMPMASTER 35 - 60:1 RATIO GREASE PUMP

60:1 ratio grease pump for use in high pressure and high volume delivery. Can be used with grease up to NLGI-2 viscosity. Suitable for 12.5kg to 20kg pails, 50kg drums and 185kg drums.

530630 - FOR 12.5KG TO 20KG PAILS

530620 - FOR 50KG DRUMS

530610 - FOR 185KG DRUMS

PUMPMASTER 45 - 25:1/40:1/70:1 RATIO GREASE PUMPS

Heavy-duty grease pump for available for wide range of applications. Can be used with grease up to NLGI-2 viscosity.

531210 - 25:1 RATIO PUMP FOR 185KG DRUMS

531420 - 40:1 RATIO PUMP FOR 50KG DRUMS

531410 - 40:1 RATIO PUMP FOR 185KG DRUMS

531720 - 70:1 RATIO PUMP FOR 50KG DRUMS

531710 - 70:1 RATIO PUMP FOR 185KG DRUMS



AIR OPERATED GREASE PUMPS

PUMPMASTER 60 - 12:1 RATIO GREASE PUMP

Moderate pressure, very high volume double acting grease pump for use in transfer applications. These pumps can be used with all types of grease up to NLGI-2 viscosity.

532130 - 12:1 RATIO PUMP FOR BULK TOTES



PUMPMASTER 60 - 80:1 RATIO GREASE PUMPS

Very high pressure and high volume delivery double acting pump for use in applications that require extra pressure and volume output, and where cold temperatures and low air pressure could limit pump performance. Pumps can be used with grease up to NLGI-2 viscosity.

532820 - 80:1 RATIO PUMP FOR 50KG DRUMS

532810 - 80:1 RATIO PUMP FOR 185KG DRUMS

PUMPMASTER 80 - 35:1 RATIO GREASE PUMPS

High volume; intermediate pressure pumps allow transferring large volumes of grease efficiently in mining, in-plant, marine, fleets, etc applications.

533321 - 35:1 RATIO PUMP FOR 50KG DRUMS

533311 - 35:1 RATIO PUMP FOR 185KG DRUMS



GREASE EQUIPMENT

AIR OPERATED GREASE PUMP KITS

PUMPMASTER 3 - 55:1 MOBILE GREASE UNITS FOR 12.5KG TO 18KG & 20KG PAILS

55:1 ratio mobile grease unit for use with 12.5kg to 18kg and 20kg pails. Includes 55:1 ratio pump, drum cover, 2m delivery hose, grease control gun with z-swivel and trolley.

424150 - MOBILE GREASE UNIT FOR 12.5KG TO 18KG PAILS

424150.002 - MOBILE GREASE UNIT FOR 12.5KG TO 18KG PAILS C/W FOLLOWER PLATE

424152 - MOBILE GREASE UNIT FOR 20KG PAILS



PUMPMASTER 3 - 55:1 PORTABLE GREASE UNITS FOR 12.5KG TO 18KG & 20KG PAILS

55:1 ratio portable grease unit for use with 12.5kg to 18kg and 20kg pails. Includes 55:1 ratio pump, drum cover with handle, 2m delivery hose and grease control gun with z-swivel.

424170 - PORTABLE GREASE UNIT FOR 12.5KG TO 18KG PAILS

424172 - PORTABLE GREASE UNIT FOR 20KG PAILS

PUMPMASTER 3 - 55:1 MOBILE GREASE UNIT FOR 50 KG UNITS

55:1 ratio mobile grease unit for use with 50kg drums. Includes 55:1 ratio pump, drum cover, 3m delivery hose, grease control gun with z-swivel and trolley. Optional follower plate version available.

425150 - MOBILE GREASE UNIT FOR 50 KG DRUMS

425150.002 - MOBILE GREASE UNIT FOR 50 KG DRUMS C/W FOLLOWER PLATE



PUMPMASTER 3 - 55:1 MOBILE GREASE UNIT FOR 185 KG DRUMS

55:1 ratio mobile grease unit for use with 185kg drums. Includes 55:1 ratio pump, drum cover, follower plate, 4m delivery hose, grease control gun with z-swivel and trolley.

428243 - MOBILE GREASE UNIT FOR 185 KG DRUMS

GREASE EQUIPMENT

AIR OPERATED GREASE PUMP KITS

PUMPMASTER 35 - 60:1 PUMP KITS FOR 50 KG OR 185 KG DRUMS

60:1 ratio pump, drum cover, follower plate and hose connection kit.

534620 - PUMP KIT FOR 50 KG DRUMS

534610 - PUMP KIT FOR 185 KG DRUMS



PUMPMASTER 35 - 60:1 PUMP & HOSE REEL PACKAGE FOR 185 KG DRUMS

60:1 ratio pump, drum cover, follower plate, hose connection kit, grease control gun with z-swivel and RM-12L 15m hose reel.

453612 - PUMP & HOSE REEL PACKAGE FOR 185 KG DRUMS

PUMPMASTER 35 - 60:1 MOBILE GREASE FOR 50 KG DRUMS

60:1 ratio pump, drum cover, grease control gun with z-swivel, delivery hose and trolley.

423160 - MOBILE GREASE UNIT FOR 50 KG DRUMS



PUMPMASTER 35 - 60:1 MOBILE GREASE UNIT FOR 185 KG DRUMS

60:1 ratio pump, drum cover, follower plate, grease gun with z-swivel, delivery hose and trolley.

426244 - MOBILE GREASE UNIT FOR 185 KG DRUMS

AIR OPERATED GREASE PUMP KITS

PUMPMASTER 35/45/60 PUMP SYSTEMS WITH PNEUMATIC HOIST & GRAVITY INDUCTOR

PM35/PM45/PM60 grease pumps mounted onto a gravity fed follower plate and an air operated pump hoist for use with 50kg and 185kg drums.

The air operated pump hoist lifts and lowers the pump, making drum changes easier, faster and safer. The pump lower end is rigidly fixed to a follower plate with a single rubber lip. The weight of the pump, pump bracket and follower plate plus the atmospheric pressure pushes the assembly against the fluid eliminating channelling and air pockets, keeping the lubricant free from contaminants, minimising waste and aiding pump priming.

FOR THE FULL RANGE VISIT OUR WEBSITE - WWW.SAMOA.LTD.UK



PUMPMASTER 45/60 PUMP SYSTEMS WITH PNEUMATIC INDUCTOR FOR 185 KG DRUMS

PM45/PM60 grease pumps mounted onto an air operated inductor plate for use with high viscosity, hard to pump greases directly from 185 kg drums.

FOR THE FULL RANGE VISIT OUR WEBSITE - WWW.SAMOA.LTD.UK

HAND OPERATED GREASE PUMPS

500 CC LEVER ACTION GREASE GUNS

Universal grease pumps to be used with 400g grease cartridges or with bulk grease. Bulk grease loading by suction or using a filler pump.

FOR THE FULL RANGE VISIT OUR WEBSITE - WWW.SAMOA.LTD.UK



500 CC PISTOL GRIP GREASE GUNS

Pistol grip grease pump for hard to reach lubrication points. Three way loading: 400g grease cartridges, bulk grease suction or filler pump. Heavy-duty cast iron head with precision fit piston.

106200 - WITH RIGID STEM AND 4-JAW CONNECTOR

106240 - WITH FLEXIBLE STEM AND 4-JAW CONNECTOR

FOR THE FULL RANGE VISIT OUR WEBSITE - WWW.SAMOA.LTD.UK

HAND-HELD AIR OPERATED GREASE PUMPS

High pressure, 60:1 pressure ratio, air operated grease pumps. They can be connected to a compressed air line or to the air brake circuit of a commercial vehicle.

167500 - 1000 CC AIR OPERATED GREASE PUMP

168600 - 500 CC AIR OPERATED GREASE PUMP

168601 - 500 CC AIR OPERATED GREASE PUMP WITH RIGID OUTLET AND 4-JAW CONNECTOR



GREASE EQUIPMENT

HAND OPERATED GREASE PUMPS

GREASE GUN FILLER PUMPS

For quick, clean and easy loading of hand, air or battery operated grease guns fitted with a filler valve. Each unit includes a medium pressure lever action pump with two loader fittings that fit the most popular filler valves (ø 9mm and ø 12.5mm), drum cover and follower plate.

108000 - FOR 12 KG TO 18 KG PAILS

108050 - FOR 20 KG PAILS

108100 - FOR 50 KG DRUMS



FILLER PUMPS FOR CENTRALISED GREASE UNITS

Medium pressure lever action pump with 1.5m hose and a 2-HK (1/4") hydraulic connector for filling the reservoir of centralised greasing systems. Includes pump, cover, hose and hydraulic connector.

108501 - FOR 12 KG TO 18 KG PAILS

108502 - FOR 20 KG PAILS

108503 - FOR 50 KG DRUMS

HIGH PRESSURE GREASE PUMPS

High pressure steel pumps to be mounted directly onto original grease kegs. Pump equipped with carrying handle, cover with pump adaptor, follower plate and 1.5m high pressure hose with rigid stem and 4-jaw connector.

151100 - FOR 12 KG TO 18 KG PAILS

151102 - FOR 20 KG PAILS



GREASE EQUIPMENT

HAND OPERATED GREASE PUMPS

PEDAL ACTION GREASE PUMP - 5 KG

Pedal action heavy-duty grease pump. Spring primed follower plate and cast iron pump mechanism ensures that the pump can be used with extremely viscous grease. Steel leak-proof reservoir, can hold up to 5 kg of grease. Includes air bleeder valve and 2m high pressure grease hose with 4-jaw connector with check valve.

157000 - PEDAL ACTION GREASE PUMP



GREASE BUCKET PUMP

Bucket pump includes a 16kg leak-proof, all steel oval shaped bucket with carrying handle and foot rest for easy handling and stability.

150000 - MULTI-PRESSURE GREASE BUCKET PUMP

20 V BATTERY GREASE GUN

SAMOA® 20v battery operated grease gun for 400g cartridges. All models include one battery, battery charger, carrying case and one grease gun complete with delivery hose and grease coupler.

Available in 2 options: 2 Ah battery pack or 4 Ah battery pack

160500 - WITH 2 AH BATTERY

160510 - WITH 4AH BATTERY



GREASE ACCESSORIES

DRUM COVERS

For use with Pumpmaster 3 and Pumpmaster 35 grease pumps. 2" BSP (F) bung opening.

418013 - FOR 12.5 KG TO 18 KG PAILS

418002 - FOR 20 KG PAILS

418016 - FOR USE WITH 50 KG DRUMS (UK)

418006 - FOR USE WITH 185 KG DRUMS



FOLLOWER PLATES

For use with Pumpmaster 3 and Pumpmaster 35 grease pumps. Follower plates eliminate air pockets and aid pump prime. Rubber flange minimises waste. With handle for removing from empty drums.

417006 - FOR 12.5 KG PAILS

417001 - FOR 12.5 KG TO 18 KG PAILS

417005 - FOR 20 KG DRUMS

417002 - FOR 50 KG DRUMS

417004 - FOR 185 KG DRUMS

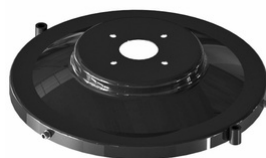


HEAVY-DUTY DRUM COVERS

For use with Pumpmaster 45 and Pumpmaster 60 grease pumps. Covers made from heavy-duty steel gauge to withstand hard usage.

418017 - FOR 50 KG DRUMS

418026 - FOR 185 KG DRUMS



HEAVY-DUTY FOLLOWER PLATES

For use with Pumpmaster 45 and Pumpmaster 60 grease pumps. Follower plates eliminate channelling and air pockets, keep lubricant free from contaminants, remove all grease from the drum and aid pump prime.

417011 - FOR 50 KG DRUMS

417009 - FOR 185 KG DRUMS



GREASE EQUIPMENT

DRUM TROLLEYS

TWO WHEELED DRUM TROLLEY

Two wheel trolley with tubular frame for 20kg pails

430000 - TWO WHEEL TROLLEY FOR 20KG PAILS

Two wheel and two front rubber pads trolley with tubular frame for 20kg & 50kg drums

431001 - TROLLEY FOR 20KG & 50KG DRUMS



FOUR WHEEL TROLLEY FOR 50 KG DRUMS

Four wheel trolley with tubular frame for 50kg drums

431000 - TROLLEY FOR 50KG DRUMS

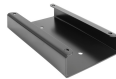
TROLLEY FOR 185 KG DRUMS

Two solid rubber wheels and one swivelling rubber wheel with brake. A hose reel and a pump can be mounted using optional brackets.

432000 - TROLLEY FOR 185 KG DRUMS

360134 - PUMP BRACKET

360135 - HOSE REEL BRACKET



HEAVY-DUTY TROLLEY FOR 185 KG DRUMS

Two 260mm front tyres and one swivelling solid rubber wheel with brake. A hose reel can be mounted using optional bracket.

432814 - HEAVY-DUTY TROLLEY FOR 185 KG DRUMS

360113 - HOSE REEL BRACKET



GREASE NIPPLES & ACCESSORIES

GREASE NIPPLES

A wide range of hydraulic, flush type, concave type, hexagon head, double hexagon and round head nipples

FOR THE FULL RANGE VISIT OUR WEBSITE - WWW.SAMOA.LTD.UK



THREAD GAUGES

070000 - METRIC THREAD GAUGE

070001 - WHITWORTH & BSP THREAD GAUGE

070002 - SAE & BSF THREAD GAUGE



GREASE CONNECTORS

For use with hydraulic grease fittings. all connector heads, contact surfaces and jaws are manufactured in hardened steel.

FOR THE FULL RANGE VISIT OUR WEBSITE - WWW.SAMOA.LTD.UK



GREASE STEMS & OUTLET HOSES

Various grease stems and rubber outlet hoses available.

FOR THE FULL RANGE VISIT OUR WEBSITE - WWW.SAMOA.LTD.UK

POLYPROPYLENE DIAPHRAGM PUMPS

DF30 SERIES POLYPROPYLENE PUMP

Very compact and reliable polypropylene diaphragm pump for small to medium volume transfer (38 litres/min max). Suitable for antifreeze solutions, windscreen wash solutions and AdBlue®/DEF.

553164 - DF30 DIAPHRAGM PUMP



DF50 SERIES POLYPROPYLENE PUMP

Very compact and reliable pump for medium volume transfer (50 litre/min max). Suitable for antifreeze solutions, windscreen wash solutions and AdBlue®/DEF.

552164 - DF50 DIAPHRAGM PUMP

DF100 SERIES POLYPROPYLENE PUMP

Very compact and reliable polypropylene diaphragm pump for medium to large volume transfer (100 litre/min max). Suitable for antifreeze solutions, windscreen wash solutions and AdBlue®/DEF.

551164 - DF100 DIAPHRAGM PUMP



ALUMINIUM DIAPHRAGM PUMPS

DF50 SERIES ALUMINIUM DIAPHRAGM PUMP

Very compact and reliable aluminium diaphragm pump for medium volume transfer (50 litre/min max). Suitable for antifreeze and windscreen wash solutions, lubricants and waste oil evacuation and transfer.

FOR THE FULL RANGE VISIT OUR WEBSITE - WWW.SAMOA.LTD.UK



DF100 SERIES ALUMINIUM DIAPHRAGM PUMP

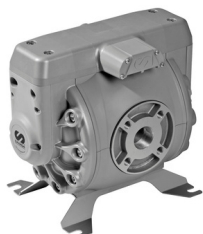
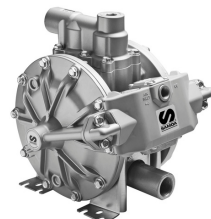
Very compact and reliable aluminium diaphragm pump for medium to large volume transfer (100 litres/min max). Suitable for antifreeze and windscreen wash solutions, lubricants, diesel and waste oil evacuation and transfer.

FOR THE FULL RANGE VISIT OUR WEBSITE - WWW.SAMOA.LTD.UK

DP200 SERIES DIAPHRAGM PUMP

Very reliable aluminium diaphragm pump for large volume transfer (200 litre/min max). Suitable for antifreeze and windscreen wash solutions, AdBlue®/DEF, lubricants, diesel and waste oil evacuation and transfer.

FOR THE FULL RANGE VISIT OUR WEBSITE - WWW.SAMOA.LTD.UK



DF250 ALUMINIUM DIAPHRAGM PUMP

Very reliable aluminium diaphragm pump for large volume transfer (250 litre/min max). Suitable for antifreeze solutions, lubricants, diesel and waste oil evacuation and transfer.

FOR THE FULL RANGE VISIT OUR WEBSITE - WWW.SAMOA.LTD.UK

DIAPHRAGM PUMP ACCESSORIES

DIAPHRAGM PUMP WALL BRACKETS

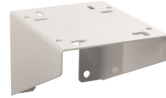
Various wall brackets for SAMOA diaphragm pumps.

360100 - WALL BRACKET FOR DF30 AND DF50 PUMPS

360101 - WALL BRACKET FOR DF100 PUMPS

360142 - WALL BRACKET FOR DP200 PUMPS

360144 - WALL BRACKET FOR DF250 PUMPS



DIAPHRAGM PUMP SUCTION KITS FOR WATER BASED FLUIDS

For use with water based fluids. Suitable for 205 litre drums or 1000 litre IBCs. Not for use with lubricants.

367020 - SUCTION KIT FOR DF30 AND DF50 PUMPS

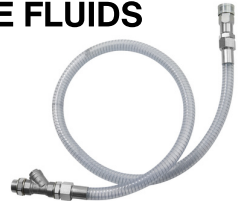
367021 - SUCTION KIT FOR DF100 AND DP200 PUMPS

DIAPHRAGM PUMP SUCTION KITS FOR WASTE FLUIDS

For use on SAMOA diaphragm pumps for waste fluids.

367022 - SUCTION KIT FOR DF50 PUMPS

367023 - SUCTION KIT FOR DF100 AND DP200 PUMPS



DIAPHRAGM PUMP SUCTION KITS FOR LUBRICANTS

For use with 205 litre drums and 1000 litre IBCs.

367005 - SUCTION KIT FOR DF50 AND DF100 PUMPS

367007 - SUCTION KIT FOR DP200 AND DF250 PUMPS

AIR OPERATED PUMPS FOR OTHER FLUIDS

1:1 RATIO NICKEL PROTECTED PUMP

Pumpmaster 2 - 1:1 ratio nickel protected universal stub pump. Suitable for antifreeze.

332120 - NICKEL PROTECTED 1:1 RATIO STUB PUMP



1:1 RATIO STAINLESS STEEL PUMP

Pumpmaster 2 - 1:1 ratio stainless steel universal stub transfer pump, divorced. Suitable for a wide range of fluids including acetone, alcohol, diesel, kerosene, water soluble cutting oils, water and more.

331120 - STAINLESS STEEL 1:1 RATIO STUB PUMP

3:1 RATIO STAINLESS STEEL PUMP

Pumpmaster 4 - 3:1 ratio stainless steel universal stub pump, divorced. Suitable for a wide range of fluids including acetone, alcohol, diesel, kerosene, water soluble cutting oils, water and more.

333120 - STAINLESS STEEL 3:1 RATIO STUB PUMP



1:1 RATIO SUCTION PUMP

Pumpmaster 2 - 1:1 ratio suction pump with a modified air valve to allow a lower upward movement of the piston to improve suction capacity, and avoid pump cavitation when suctioning fluids like waste oil through smaller diameter suction canes.

351121 - 1:1 RATIO SUCTION PUMP

HAND OPERATED PUMPS FOR OTHER FLUIDS

LEVER ACTION DRUM PUMPS

Lever action drum pumps for the transfer of light lubricants, diesel and antifreeze, depending on model.

304500 - LEVER ACTION DRUM PUMP FOR LIGHT LUBRICANTS

304509 - LEVER ACTION DRUM PUMP WITH VITON® SEALS FOR ANTIFREEZE

305000 - GC BRANDED LEVER ACTION DRUM PUMP FOR LUBRICANTS AND DIESEL



ROTARY ACTION PUMPS

For transfer of light to medium viscosity petroleum based lubricants. Pumps include height adjustable bung adaptor, three piece suction tube and 1 metre delivery hose.

308010 - ALUMINIUM ROTARY ACTION DRUM PUMP

308300 - CAST-IRON ROTARY ACTION DRUM PUMP

PVC ROTARY ACTION PUMP

For the continuous transfer of acid-based corrosive fluids and water-based fluids from 20 litre, 50 litre or 205 litre drums. PVC pump with stainless steel shaft.

308200 - PVC ROTARY ACTION PUMP

300900 - 2 METRE DELIVERY HOSE



PLASTIC LEVER PUMP

Lever action pumps with a unique toggle mechanism that provides a very smooth operation. Pumps are manufactured in polypropylene and include a 2" BSP bung adaptor with a lockable nut that allows placing the pump in its optimal position for an easier lever action.

300006 - WITH EPDM SEALS FOR ADBLUE®/DEF

300007 - WITH VITON® SEALS FOR A WIDE RANGE OF CHEMICALS

300009 - WITH NBR SEALS FOR LUBRICANTS

HAND OPERATED PUMPS FOR OTHER FLUIDS

PLASTIC SYPHON PUMPS

Plastic manual syphon pumps for various fluids. Available for a wide range of applications.

FOR THE FULL RANGE VISIT OUR WEBSITE - WWW.SAMOA.LTD.UK



LIFT ACTION PUMPS

Lift action pumps for various applications. Please check fluid compatibility with the pump prior to its use.

FOR THE FULL RANGE VISIT OUR WEBSITE - WWW.SAMOA.LTD.UK

STAINLESS STEEL LIFT ACTION PUMPS

Stainless steel lift action transfer pumps for aggressive fluids, solvent, degreasers, etc. Pump includes 2" height adjustable adaptor. Stainless steel pumps with Teflon® seals.

300600 - FOR 20 LITRE TO 50 LITRE DRUMS

300601 - FOR 205 LITRE DRUMS



HAND OPERATED PUMPS FOR OTHER FLUIDS

GEAR OIL DISPENSER

Suitable for 12 litre to 18 litre pails or 20 litre pails. Complete with cover and 1.5 metre hose with nozzle.

320310 - FOR 12 TO 18 LITRE PAILS

320300 - FOR 20 LITRE PAILS

741602 - CARRY HANDLE



GEAR OIL UNITS

Plastic lift pump suitable for gear oil. A range of adaptors to convert the 2" BSP thread to fit various threads on drums are available separately. Comes complete with hose assembly. Available with or without trolley.

FOR THE FULL RANGE VISIT OUR WEBSITE - WWW.SAMOA.LTD.UK

CONNECTING ADAPTORS

A range of connecting adaptors to convert 2" BSP thread to fit the various threads available on drums and barrels.

FOR THE FULL RANGE VISIT OUR WEBSITE - WWW.SAMOA.LTD.UK



AIR OPERATED ADBLUE® PUMPS & KITS

AIR OPERATED ADBLUE® DIAPHRAGM PUMPS

Air operated plastic Directflo® pumps for dispensing AdBlue®/DEF.

FOR THE FULL RANGE VISIT OUR WEBSITE - WWW.SAMOA.LTD.UK



AIR OPERATED ADBLUE® DIAPHRAGM PUMP KITS

Air operated plastic Directflo® pump kits for dispensing AdBlue®/DEF. Includes pump, nozzle, pump bracket, CSC quick coupling and EPDM hoses.

FOR THE FULL RANGE VISIT OUR WEBSITE - WWW.SAMOA.LTD.UK

AIR OPERATED ADBLUE® MOBILE UNITS

AdBlue® mobile dispenser with Directflo® pump, digital meter, nozzle and optional hose reel.

557952 - MOBILE UNIT WITH DF30 DIAPHRAGM PUMP AND AIR HOSE REEL

557953 - MOBILE UNIT WITH DF30 DIAPHRAGM PUMP



ELECTRIC ADBLUE® PUMPS & KITS

ELECTRIC ADBLUE® PUMPS

12v, 24v DC and 230v AC multi-diaphragm pumps with no mechanical seals designed for dispensing AdBlue®. Pumps are self-priming and have a by-pass valve. Electric motors have IP55 protection and include on/off switch, fuse and 2 metre cable with crocodile clips or plug.

FOR THE FULL RANGE VISIT OUR WEBSITE - WWW.SAMOA.LTD.UK



ELECTRIC ADBLUE® PUMP KITS

For IBCs and drums. All kits include pump, pump bracket, nozzle, suction accessories and optional in-line meter. Available in 12v and 24v DC and 230v AC.

FOR THE FULL RANGE VISIT OUR WEBSITE - WWW.SAMOA.LTD.UK

ELECTRIC ADBLUE® MOBILE UNITS

AdBlue® mobile dispenser with electric pump, digital meter, nozzle and optional cable reel.

560307 - MOBILE UNIT WITH ELECTRIC PUMP AND CABLE REEL

560308 - MOBILE UNIT WITH ELECTRIC PUMP



12V DC FULLY EQUIPPED MOBILE ADBLUE® UNIT

110 litre capacity trolley equipped with 12v DC electric pump and 3m delivery hose with manual nozzle.

560311 - 110 LITRE 12V DC FULLY EQUIPPED MOBILE ADBLUE® UNIT

12V DC FULLY EQUIPPED ADBLUE® UNITS

Choose from either 220 litre or 440 litre capacity tank equipped with 12v DC electric pump and 4m delivery hose with automatic nozzle.

560312 - 220 LITRE 12V DC FULLY EQUIPPED ADBLUE® UNIT

560313 - 440 LITRE 12V DC FULLY EQUIPPED ADBLUE® UNIT



HAND OPERATED ADBLUE® PUMPS & KITS

ADBLUE® PLASTIC LEVER PUMP KITS

Lever action pump with EPDM seals for use with AdBlue®.



300006 - PLASTIC LEVER PUMP ONLY

300006.001 - PLASTIC LEVER PUMP AND 2 METRE PLASTIC DELIVERY HOSE

300006.002 - PLASTIC LEVER PUMP, 2 METRE DELIVERY HOSE & 2" BSP/TRISURE ADAPTOR

ADBLUE® GRAVITY FEED KIT

Gravity feed kit available in various lengths. Includes PVC hose, manual nozzle and S60 x 6 swivel IBC connector. No assembly required.



560905 - 3 METRE GRAVITY FEED KIT

560905/4 - 4 METRE GRAVITY FEED KIT

560905/5 - 5 METRE GRAVITY FEED KIT

560905/6 - 6 METRE GRAVITY FEED KIT

560905/7 - 7 METRE GRAVITY FEED KIT

560905.001 - 3 METRE GRAVITY FEED KIT WITH EPDM HOSE

ADBLUE® LEVER ACTION PUMP KIT FOR IBC

Lever action pump kit with EPDM seals for use on 1000 litre IBCs. Side mounted on steel bracket. Kit includes lever action pump, pump bracket, S60 x 6 swivel IBC connector, suction hose, delivery hose and optional nozzle.



300010 - IBC PUMP KIT WITH PVC DELIVERY HOSE

300902 - IBC PUMP KIT WITH EPDM DELIVERY HOSE AND MANUAL NOZZLE



FULLY EQUIPPED MOBILE ADBLUE® UNIT

110 litre capacity trolley equipped with robust rotary pump and 3m delivery hose with manual nozzle.

309201 - 110 LITRE HAND OPERATED FULLY EQUIPPED MOBILE ADBLUE® UNIT

ADBLUE® ACCESSORIES

UNIVERSAL BRACKET FOR 205 LITRE DRUM

Universal pump bracket, allows fixing a pump onto a 205 litre drum or to a 1000 litre IBC container. Complete with carrying handle and drop pocket.

360137 - UNIVERSAL PUMP BRACKET



CSC QUICK COUPLING

CSC quick coupling for AdBlue®/DEF for use with IBCs and 205 litre drums. ø 19mm hose barb connection

560901 - CSC QUICK COUPLING

MANUAL NOZZLE FOR ADBLUE®

AdBlue®/DEF thermoplastic manual nozzle. Approximate delivery: up to 90 litre/min. Range of connections available.

361001.370 - Ø 19MM INLET HOSE BARB

361002.370 - Ø 25MM INLET HOSE BARB

361003.370 - 1" BSP (F) INLET THREAD



AUTOMATIC NOZZLE FOR ADBLUE®

AdBlue®/DEF automatic nozzle. Approximate delivery: up to 45 litre/min. ø 19mm inlet hose barb connection. Available in stainless steel or stainless steel/polypropylene.

569000 - AUTOMATIC NOZZLE - STAINLESS STEEL

569001 - AUTOMATIC NOZZLE - STAINLESS STEEL & POLYPROPYLENE

IN-LINE ADBLUE® METERS

Oval gear meter for use as in-line meters. Manufactured in PVC, AISI 316 stainless steel, acetal and Viton® for low pressure dispense of AdBlue®/DEF, windscreen wash and antifreeze solutions. They can be wall mounted in the fluid line or at the pump outlet.

366010 - LOW PRESSURE IN-LINE ADBLUE® METER

366020 - MEDIUM PRESSURE IN-LINE ADBLUE® METER



HOSE REELS & ACCESSORIES

HOSE REELS

RM-12 OPEN HOSE REELS

Double pedestal, double arm hose reels with a 10 metre capacity. Suitable for air, water, antifreeze solutions, synthetic and mineral oils and grease.

FOR THE FULL RANGE VISIT OUR WEBSITE - WWW.SAMOA.LTD.UK



RM-12S SINGLE ARM HOSE REELS

Single arm aluminium hose reels with a 10 metre or 15 metre capacity. Suitable for air, water, antifreeze and screenwash solutions, high pressure hot water, synthetic and mineral oils, AdBlue® and grease.

FOR THE FULL RANGE VISIT OUR WEBSITE - WWW.SAMOA.LTD.UK

RM-12CLX SLIM ENCLOSED HOSE REELS

Totally enclosed slim hose reels with a 10 metre or 15 metre capacity. Suitable for air, water, antifreeze and screenwash solutions, synthetic and mineral oils and grease.

FOR THE FULL RANGE VISIT OUR WEBSITE - WWW.SAMOA.LTD.UK



RM-12CL ENCLOSED HOSE REELS

Totally enclosed hose reels with 10 metre and 15 metre capacity. Suitable for air, water, antifreeze and screenwash solutions, high pressure hot water, synthetic and mineral oils, AdBlue® and grease.

FOR THE FULL RANGE VISIT OUR WEBSITE - WWW.SAMOA.LTD.UK

HOSE REELS & ACCESSORIES

HEAVY-DUTY HOSE REELS

RM-12L HEAVY-DUTY OPEN HOSE REELS

Double pedestal, double arm hose reels with a 15 metre capacity. Suitable for air, water, antifreeze and screenwash solutions, high pressure hot water, synthetic and mineral oils and grease.

FOR THE FULL RANGE VISIT OUR WEBSITE - WWW.SAMOA.LTD.UK



RM-34 INTENSIVE DUTY HOSE REELS

Full metal, intensive duty, double pedestal hose reels with a 15 metre and 20 metre capacity. Suitable for air, water, antifreeze and screenwash solutions, synthetic and mineral oils, AdBlue®, waste oil evacuation, diesel and grease.

FOR THE FULL RANGE VISIT OUR WEBSITE - WWW.SAMOA.LTD.UK



RM-100 LARGE CAPACITY HOSE REELS

Full metal, large capacity, double pedestal hose reels with a 15 metre, 20 metre, 25 metre and 30 metre capacity. Suitable for air, water, antifreeze solutions, synthetic and mineral oils, waste oil evacuation and diesel.

FOR THE FULL RANGE VISIT OUR WEBSITE - WWW.SAMOA.LTD.UK



RM-150 LARGE DELIVERY HOSE REELS

Full metal, large delivery hose reel with 15 metre x 1-1/2" capacity. Suitable for water and diesel.

FOR THE FULL RANGE VISIT OUR WEBSITE - WWW.SAMOA.LTD.UK



HOSE REELS & ACCESSORIES

COMPACT REELS FOR AIR & POWER

RM-38 COMPACT AIR HOSE REELS

Compact enclosed reels for compressed air. Manufactured in steel, all reels include a pivoting wall bracket for an easy and convenient installation. Reels supplied with PVC hose with a maximum working pressure of 15 bar (285 psi).

500115 - 15 METRE X 8 MM HOSE

500116 - 12 METRE X 10 MM HOSE



RM-POWER CABLE REELS

Compact reels with high resistance thermoplastic enclosure. Compact design with wide outlet for a comfortable and friction free cable extension. All reels include a pivoting bracket and cable overload breaker. Cable specified for each model. For use with 230v - 50 hz only.

FOR THE FULL RANGE VISIT OUR WEBSITE - WWW.SAMOA.LTD.UK

STAINLESS STEEL REELS

RM-12SS STAINLESS STEEL HOSE REELS

Stainless steel hose reels (AISI 304) for air, water and corrosive fluids. Ideal for food industry. 0.8m inlet hose included.

503120 - 20 METRE X 1/2" HOSE (LOW PRESSURE)

503400 - 20 METRE X 3/8" HOSE (HIGH PRESSURE)



HOSE REELS & ACCESSORIES

HOSE REEL STANDS & ACCESSORIES

HOSE REEL BRACKETS

Single and multiple hose reel brackets available

FOR THE FULL RANGE VISIT OUR WEBSITE - WWW.SAMOA.LTD.UK



GUN HOLDERS & DRIP POCKETS

Various dispensing gun holders and drip pockets available.

FOR THE FULL RANGE VISIT OUR WEBSITE - WWW.SAMOA.LTD.UK



HOSE REEL POSTS & STANDS

Hose reel posts and stands available for various configurations. Bespoke fabrications can also be accommodated.

FOR THE FULL RANGE VISIT OUR WEBSITE - WWW.SAMOA.LTD.UK

DISPENSING VALVES & METERS

OIL & FLUID DISPENSING VALVES

PA40 NON-METERED CONTROL VALVE

Control gun used to dispense synthetic and mineral based lubricants, gear oil, hydraulic oil and fluids, ATF and antifreeze solutions. 40 litre/min. Available with various nozzles.

FOR THE FULL RANGE VISIT OUR WEBSITE - WWW.SAMOA.LTD.UK



PA70 NON-METERED HIGH FLOW CONTROL VALVE

Large delivery control gun used to dispense synthetic and mineral based lubricants, gear oil, hydraulic oil and fluids, ATF and antifreeze solutions. Available with 3/4" or 1" inlet thread swivel. 70 litre/min.

FOR THE FULL RANGE VISIT OUR WEBSITE - WWW.SAMOA.LTD.UK



EC30 METERED CONTROL VALVE

Metered control gun for measured dispensing of synthetic and mineral based lubricants, gear oil, hydraulic oil and fluids, ATF and antifreeze solutions. 30 litre/min. Available with various nozzles

FOR THE FULL RANGE VISIT OUR WEBSITE - WWW.SAMOA.LTD.UK



EC70 METERED HIGH FLOW CONTROL VALVE

Large delivery metered control gun used to dispense synthetic and mineral based lubricants, gear oil, hydraulic oil and fluids, ATF and antifreeze solutions. Available with 3/4" or 1" inlet thread swivel. 70 litre/min.

FOR THE FULL RANGE VISIT OUR WEBSITE - WWW.SAMOA.LTD.UK



DISPENSING VALVES & METERS

OIL & FLUID DISPENSING VALVES

MC30 OG MECHANICAL METERED CONTROL VALVE

Mechanically metered control gun for measured dispensing of synthetic and mineral based lubricants, gear oil, hydraulic oil and fluids, ATF and antifreeze solutions. 30 litres/min. Available with various nozzles.

FOR THE FULL RANGE VISIT OUR WEBSITE - WWW.SAMOA.LTD.UK



MC30 MECHANICAL METERED CONTROL VALVE

Mechanical metered control gun for measured dispensing of synthetic and mineral based lubricants, gear oil, hydraulic oil and fluids, ATF and antifreeze solutions in tough, intensive use applications. 30 litres/min. Available with various nozzles.

FOR THE FULL RANGE VISIT OUR WEBSITE - WWW.SAMOA.LTD.UK

MP30 MECHANICAL PRESET METERED CONTROL VALVE

Mechanical pre-set metered control valves allow automatic filling of large crankcases, engines and other lubricant reservoirs. For automatic operation, set the dial pointer to the quantity needed, actuate the trigger for automatic latching and the valve will deliver exactly the volume required and then shut off. 0-60 litres dial.

365811 - MECHANICAL PRESET METERED CONTROL VALVE



PRESET DIGITAL HOSE END METER

Volumetric metering gun with electronic recorder with preselection function of the quantity to be dispensed. With quick access to 5 presets in memory or to the history of the last 5 dispensed. Provided with a volumetric chamber with an oval gear system, electronic recorder with digital reading, calibration key for easy adjustment of the real volume dispensed, ergonomic handle and flow regulation trigger. Fluid inlet connection with swivel joint with strainer on the inlet connection, sheathed in a PVC protector, and an outlet extension on the other end.

365810 - DIGITAL PRESET HOSE END METER

DISPENSING VALVES & METERS

OIL BAR & IN-LINE METERS



DISPENSING OIL BAR C/W 1 OUTLET

Oil bar with 1 outlet for dispensing lubricants and fluids. Built-in drip tray. Oil bar can dispense up to 4 products. Can be wall mounted. Additional outlets can be purchased separately.

361200 - OIL BAR WITH 1 OUTLET

361110 - ADDITIONAL OUTLET

1/2" & 3/4" IN-LINE METERS

Oval gear meters for use as in-line meters with oil, diesel, AdBlue®/DEF, windscreen wash solution or antifreeze solution, depending on meter. They can be wall mounted in the fluid line or at the pump outlet. Powered by 2 x AAA batteries. Meter is shock-proof and isolated from the fluid handled.

FOR THE FULL RANGE VISIT OUR WEBSITE - WWW.SAMOA.LTD.UK



1/2" IN-LINE MECHANICAL METER

Oval gear meter with mechanical odometer style register for use with lubricants up to SAE 140. Resettable partial reading up to 999.9 litres and non-resettable totaliser. Max. working pressure: 70 bar (1000 psi). Oil Flow Range: 1 to 27 litre/min.

366855 - OVAL GEAR IN-LINE MECHANICAL METER (LITRES)

1/2" & 3/4" PULSE TRANSMITTERS

Oval gear meters for use as in-line meters for oil, diesel, AdBlue®/DEF, windscreen wash solution and antifreeze solution lines, depending on model. Can be wall mounted in the fluid line or at the pump outlet. Meters are shock-proof and isolated from the fluid handled.

FOR THE FULL RANGE VISIT OUR WEBSITE - WWW.SAMOA.LTD.UK



DISPENSING VALVES & METERS

WATER & GREASE CONTROL VALVES



NON-METERED CONTROL VALVE FOR WATER BASED FLUIDS

Delivery gun with reinforced polyamide body and stainless steel valve mechanism for use with fluids like windscreen wash solutions, glycol solution (antifreeze) and other water based solutions.

186311 - NON-METERED CONTROL VALVE WITH SS RIGID OUTLET

186312 - NON-METERED CONTROL VALVE WITH FLEXIBLE OUTLET

METERED CONTROL VALVE FOR WATER BASED FLUIDS

Hose end meter with electronic display for measured delivery of windscreen wash, coolant and antifreeze solutions.

365586 - METERED CONTROL VALVE WITH SS RIGID OUTLET

365587 - METERED CONTROL VALVE WITH FLEXIBLE OUTLET



WATER GUNS

For use with water and antifreeze solutions.

186000 - WATER GUN

186010 - WATER BIB

185001 - WASH GUN

GREASE CONTROL VALVES

High pressure grease control guns with ergonomic body and trigger designed to reduce operator hand fatigue.

FOR THE FULL RANGE VISIT OUR WEBSITE - WWW.SAMOA.LTD.UK



WASTE OIL EQUIPMENT

WASTE OIL SUCTION COLLECTION UNITS



WASTE OIL SUCTION COLLECTION UNIT

Can be used remotely once vacuum is created inside the steel reservoir. Discharge is done through a 1.5 metre discharge hose pressurising the unit (except model 371600).

372600 - 100 LITRE UNIT

373600 - 70 LITRE UNIT

371600 - 24 LITRE UNIT



WASTE OIL SUCTION COLLECTION UNIT WITH TRANSPARENT CHAMBER

Unit includes 10 litre transparent chamber that can be used as a vacuum reservoir and allows an immediate inspection of the extracted waste oil.

372100 - 100 LITRE UNIT WITH TRANSPARENT CHAMBER

373100 - 70 LITRE UNIT WITH TRANSPARENT CHAMBER

COMBINED WASTE OIL SUCTION & GRAVITY COLLECTION UNIT

Can be used remotely once vacuum is created inside the steel reservoir. Discharge is done through a 1.5 metre discharge hose pressurising the unit.

372500 - 100 LITRE UNIT

373500 - 70 LITRE UNIT



COMBINED WASTE OIL SUCTION & GRAVITY COLLECTION UNIT WITH TRANSPARENT CHAMBER

Unit includes 10 litre transparent chamber that can be used as a vacuum reservoir and allows an immediate inspection of the extracted waste oil.

372000 - 100 LITRE UNIT WITH TRANSPARENT CHAMBER

373000 - 70 LITRE UNIT WITH TRANSPARENT CHAMBER

WASTE OIL DRAIN UNITS



GRAVITY COLLECTION WITH PRESSURE DISCHARGE

Discharge is done through a 1.5 metre hose pressurising the unit.

372400 - 100 LITRE GRAVITY WASTE OIL DRAINER - PRESSURE DISCHARGE

373400 - 70 LITRE GRAVITY WASTE OIL DRAINER - PRESSURE DISCHARGE

GRAVITY COLLECTION WITH PUMP DISCHARGE

Discharge is done through a 1:1 pressure ratio pneumatic piston pump attached to the back of the unit reservoir and a 1.5 metre hose with hydraulic type coupler.

372200 - 100 LITRE GRAVITY WASTE OIL DRAINER - PUMP DISCHARGE

373200 - 70 LITRE GRAVITY WASTE OIL DRAINER - PUMP DISCHARGE



GRAVITY COLLECTION WITH REMOTE PUMP DISCHARGE

Discharge is done by connecting the unit to a wall mounted discharge pump kit through a hydraulic coupler located at the bottom of the reservoir.

372300 - 100 LITRE GRAVITY WASTE OIL DRAINER - REMOTE PUMP DISCHARGE

373300 - 70 LITRE GRAVITY WASTE OIL DRAINER - REMOTE PUMP DISCHARGE

SPECIALITY DRAINERS



MOTORCYCLE WASTE OIL DRAINER

Unit incorporates a low profile pivoting bowl for gravity collection from motorbikes or service lifts. When the unit is connected to a compressed air supply the waste oil is automatically discharged through an open-end 1.5 metre hose. 35 litre capacity.

437310 - MOTORCYCLE WASTE OIL DRAINER

PIT ROLLING DRAINER

Rolling drainer for being installed between pit rails with min/max width of 1040 mm/1450 mm. 95 litre capacity. Unit includes anti-splash grid, four vertical and four horizontal rollers for easy rolling and a 1-1/4" outlet with ball valve. The unit allows the connection of a hydraulic connector for discharging once full, with a discharge pump kit.

439100 - PIT ROLLING DRAINER - 95 LITRE CAPACITY



LOW LEVEL MOBILE DRAINERS

Low level mobile drainer for gravity collection of waste oil. Recommended to use when a lift or service pit is not available. Gravity discharge through a drain valve or using an evacuation pump through a dry-break hydraulic connector (not included).

435000 - LOW LEVEL DRAINER - 20 LITRE

436000 - LOW LEVEL DRAINER - 95 LITRE



ANTIFREEZE RECOVERY UNIT

Low level waste drainer equipped with a DF50 diaphragm pump. Allows draining the antifreeze when a pit or lift is not available. Thanks to the diaphragm pump and the delivery gun it is possible to recycle the antifreeze.

436100 - ANTIFREEZE RECOVERY UNIT - 95 LITRE



WASTE OIL EVACUATION PUMPS

WASTE OIL EVACUATION PUMP KITS - DIAPHRAGM

Choose from DF100 or DP200 double diaphragm pump kit for discharging waste oil drainers through a hydraulic coupler

559101 - WASTE OIL EVACUATION DIAPHRAGM PUMP KIT - DF100

559501 - WASTE OIL EVACUATION DIAPHRAGM PUMP KIT - DP200



WASTE OIL EVACUATION PUMP KIT - PISTON PUMP

Pumpmaster 2 - 1:1 pressure ratio piston pump kit for discharging waste oil drainers through a hydraulic coupler.

379100 - WASTE OIL EVACUATION PISTON PUMP KIT

WASTE OIL DRAIN & EVACUATION KIT FOR CONSTRUCTION & MINING VEHICLES

15 metre x 1" high volume hose reel with its inlet hose connected to a DF100 double diaphragm pump. The kit is used for clean, fast and efficient waste oil evacuation from large construction & mining vehicles.

559111 - WASTE OIL EVACUATION KIT FOR CONSTRUCTION & MINING VEHICLES



EVACUMASTER WASTE OIL SUCTION UNIT

Single point waste oil suction unit for collecting waste oil directly from the vehicle's engine using a suction cane inserted into the engine oil dipstick tube. The unit is installed alongside the service bay and provides the cleanest method for waste oil collection.

379711 - WALL MOUNTED EVACUMASTER

379710 - PEDESTAL MOUNTED EVACUMASTER

WASTE OIL EQUIPMENT

WASTE OIL ACCESSORIES



WASTE OIL COLLECTION BOWLS

372002 - COLLECTION BOWL FOR 100 LITRE WASTE OIL DRAINER (INCLUDES OVERSIZED EXTENSION)

373002 - COLLECTION BOWL FOR 100 LITRE WASTE OIL DRAINER

743305 - 20 LITRE COLLECTION BOWL FOR EMPTY DRUMS



WASTE OIL SUCTION HOSE REELS

For use with evacumaster units.

506503 - 6 METRE X 5/8" SINGLE ARM WASTE OIL REEL

507503 - 6 METRE X 5/8" ENCLOSED WASTE OIL REEL

SUCTION CANES & ADAPTORS

Various canes and adaptors for use with waste oil units.

737950 - SUCTION CANES & ADAPTORS SET

737972 - SUCTION CANES & ADAPTORS SET WITH CANE HOLDER



FOUR-WAY EVACUATION VALVE

Simplifies plumbing and allows the use of one pump to pull and push waste fluids on/off their storage tank, with the swing of a handle.

361300 - FOUR-WAY EVACUATION VALVE

DIESEL EQUIPMENT

DC DIESEL PUMPS & KITS - POLUX SERIES



12V & 24V DC ROTARY VANE PUMPS FOR DIESEL

Self-priming pumps with self-adjustable vanes. Electric DC motor with IP55 protection allows intermittent operation duty with maximum cycles of 30 minutes.

FOR THE FULL RANGE VISIT OUR WEBSITE - WWW.SAMOA.LTD.UK



12V & 24V DC DIESEL TRANSFER KITS

Portable transfer kit with 12v or 24v DC pump, delivery hose, nozzle, meter, fittings and suction kit (depending on model).

FOR THE FULL RANGE VISIT OUR WEBSITE - WWW.SAMOA.LTD.UK



12V DC FULLY EQUIPPED MOBILE UNIT - 110 LITRE

110 litre capacity trolley equipped with 12 v DC pump and 3 metre delivery hose with manual nozzle. Suitable for diesel.

684515 - 12V DC DIESEL MOBILE UNIT

12V DC FULLY EQUIPPED UNIT FOR DIESEL

220 litre or 440 litre capacity tank equipped with 12 v DC electric pump and 4 metre delivery hose with automatic nozzle. Suitable for diesel.

684516 - 220 LITRE CAPACITY UNIT

684517 - 440 LITRE CAPACITY UNIT



DIESEL EQUIPMENT

AC DIESEL PUMPS & KITS - POLARIS SERIES



230V AC ROTARY VANE PUMPS FOR DIESEL

Self-priming pumps with self-adjustable vanes. Electric AC motor with IP55 protection, allows continuous operation duty.

FOR THE FULL RANGE VISIT OUR WEBSITE - WWW.SAMOA.LTD.UK

230V AC DIESEL TRANSFER PUMP KITS

230v AC Polaris Series pump kits includes delivery hose and nozzle, fittings and suction kit (depending on model)

FOR THE FULL RANGE VISIT OUR WEBSITE - WWW.SAMOA.LTD.UK



230V AC DIESEL TRANSFER PUMP KITS WITH METER

230v AC Polaris Series pump kits with mechanical meter, delivery hose, fittings, nozzle and suction kit (depending on model). Meter valid for non-commercial applications only.

FOR THE FULL RANGE VISIT OUR WEBSITE - WWW.SAMOA.LTD.UK

WALL MOUNTED 230V AC PUMP KITS

50 or 70 litre/min Polaris Series pump on a bracket for wall or tank mounting. Kit includes pump with on/off switch, wall mounting bracket, 4 metre delivery hose, nozzle and three digit meter. Meter valid for non-commercial applications only.

FOR THE FULL RANGE VISIT OUR WEBSITE - WWW.SAMOA.LTD.UK



WALL MOUNTED 230V AC PUMP CABINETS

50 or 70 litre/min Polaris Series pump in a cabinet. Includes pump, cabinet with nozzle holder with automatic on/off switch, 4 metre delivery hose, automatic nozzle and a three digit display. Meter valid for non-commercial applications only.

FOR THE FULL RANGE VISIT OUR WEBSITE - WWW.SAMOA.LTD.UK



DIESEL EQUIPMENT

DIESEL ACCESSORIES



DIESEL METERS

Nutating-disk meter for diesel with mechanical register. Very low pressure drop; it can be used for gravity fed applications. Max. working pressure: 10 bar. Flow range: 20 to 100 litre/min. Meter valid for non-commercial applications only.

680300 - DIESEL METER WITH 3-DIGIT REGISTER

680301 - DIESEL METER WITH 4-DIGIT REGISTER



DIESEL NOZZLES

Range of manual and automatic diesel nozzles

FOR THE FULL RANGE VISIT OUR WEBSITE - WWW.SAMOA.LTD.UK



DIESEL FILTERS

When fitted at the pump outlet they eliminate dirt up to 30 microns and the water contained in diesel.

FOR THE FULL RANGE VISIT OUR WEBSITE - WWW.SAMOA.LTD.UK

DIESEL HOSES

Rubber hose with metal swaged 1" BSP (M) fittings.

FOR THE FULL RANGE VISIT OUR WEBSITE - WWW.SAMOA.LTD.UK



CONSUMABLES

FUNNELS & MEASURES



FUNNELS WITH FLEXIBLE SPOUT

No spill, no splash, quick discharge funnels. With filter and flexible spout

670019 - 190MM DIAMETER - 2 LITRE CAPACITY

670023 - 230MM DIAMETER - 3.5 LITRE CAPACITY

INDUSTRIAL FUNNELS

Large 5 litre capacity funnels. Supplied with filter. Available for lubricants or diesel.

671030 - FOR DIESEL

671031 - FOR LUBRICANTS



MEASURES WITH FLEXIBLE SPOUT

Fluid measures for lubricants anti-freeze, brake fluid, petroleum, diesel, etc. Moulded in high density polyethylene with flexible spout. Plastic lids available to purchase separately.

FOR THE FULL RANGE VISIT OUR WEBSITE - WWW.SAMOA.LTD.UK

GRADUATED MEASURES

For lubricants, anti-freeze, brake fluid, petroleum, diesel, etc. Moulded in high density polyethylene. Available in sizes - 1/4 litre, 1/2 litre, 1 litre, 2 litre, 3 litre, 5 litre and set of six jugs.



FOR THE FULL RANGE VISIT OUR WEBSITE - WWW.SAMOA.LTD.UK

CONSUMABLES

DRAIN PANS, OIL & FUEL CANS



GRAVITY DRAIN PANS

Simple, effective solution for fluid draining.

673007 - GRAVITY DRAINER - 6 LITRE

673014 - GRAVITY DRAINER - 14 LITRE

673008 - GRAVITY DRAINER FOR WASTE OILS - 8 LITRE

OIL CANS

Metal and polyethylene bodied oil cans. Lever action. Armoured flexible spout.

FOR THE FULL RANGE VISIT OUR WEBSITE - WWW.SAMOA.LTD.UK



STEEL JERRYCANS

Green colour with protective paint in the inside. With no outlet spout

FOR THE FULL RANGE VISIT OUR WEBSITE - WWW.SAMOA.LTD.UK

RED PLASTIC FUEL CANS

Red coloured plastic can with outlet spout for diesel.

621005 - 5 LITRE CAPACITY - U.N. APPROVED

621010 - 10 LITRE CAPACITY - U.N. APPROVED

621020 - 20 LITRE CAPACITY - U.N. APPROVED



GREEN PLASTIC FUEL CANS

Green coloured plastic can with outlet spout for gasoline.

621105 - 5 LITRE CAPACITY - U.N. APPROVED

621110 - 10 LITRE CAPACITY - U.N. APPROVED

621120 - 20 LITRE CAPACITY - U.N. APPROVED

CONSUMABLES

BLOW GUNS, WASH GUNS & SPRAY GUNS



INDUSTRIAL QUALITY BLOW GUNS

Aluminium blow guns with anti-slide grip. High air flow and wide range of accessories. Working pressure: 3 to 8 bar. Connection thread: 1/4" BSP (F). Includes extra-silent nozzle.

FOR THE FULL RANGE VISIT OUR WEBSITE - WWW.SAMOA.LTD.UK

THERMOPLASTIC BLOW GUNS

Thermoplastic blow guns with 1/4" BSP (F) fluid inlet. Maximum free flow delivery 380 litre/min.

FOR THE FULL RANGE VISIT OUR WEBSITE - WWW.SAMOA.LTD.UK



WASH GUNS

Medium pressure, up to 30 bar, wash gun. Fitted with a \varnothing 3.5 mm nozzle as standard that can be replaced with a \varnothing 2.5 mm nozzle if a higher pressure flow is required. On/off and flow regulation knob. Inlet thread: 1/2" BSP (F)

FOR THE FULL RANGE VISIT OUR WEBSITE - WWW.SAMOA.LTD.UK

INDUSTRIAL SPRAY GUNS

187000 - Industrial Spray Gun - Metal Container

Min. - max. pressure: 3 to 10 bar, connection thread 1/4" BSP (F). Aluminium gun body and 1 litre aluminium container.

187001 - Industrial Spray Gun - Plastic Container

Min. - max. pressure: 3 to 10 bar, connection thread 1/4" BSP (F). Aluminium gun body, metal outlet and 1 litre plastic container.



THERMOPLASTIC SPRAY GUNS

Light spray gun manufactured in high quality chemical resistant thermoplastic. For spray cleaning using chemical products and spraying parts with corrosion protection fluids or lubricants. Capacity 1 litre.

FOR THE FULL RANGE VISIT OUR WEBSITE - WWW.SAMOA.LTD.UK

CONSUMABLES

INDUSTRIAL SPRAYERS & TYRE INFLATORS



INDUSTRIAL SPRAYERS

Premium quality industrial sprayers specially designed to provide greater durability and versatility for use with the most aggressive chemicals.

185500 - INDUSTRIAL SPRAYER - 1.5 LITRE CAPACITY

185501 - INDUSTRIAL SPRAYER - 5 LITRE CAPACITY

TYRE INFLATOR GUNS

Various tyre inflator guns and accessories.

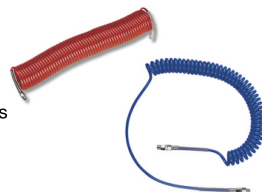
FOR THE FULL RANGE VISIT OUR WEBSITE - WWW.SAMOA.LTD.UK



POLYURETHANE & POLYAMIDE AIR HOSES

Hoses for use in air lines with blow guns or pneumatic tools. Include swivel male adaptors and dock on end part to protect it.

FOR THE FULL RANGE VISIT OUR WEBSITE - WWW.SAMOA.LTD.UK



AIR TREATMENT UNITS

Air Line Filters - to protect valves, pump motors or pneumatic tools from damage or wear caused by dirt and moisture contained in compressed air. Semi-automatic bleeding valve. Pressure Regulator - to maintain a selected air pressure constant eliminating over pressure risks and erratic operation of equipment. Also available combined with an air filter forming a compact unit. Air Line Lubricators - to create an oil mist that helps increase service life of pumps and other air tools. Oil fill port on top and oil mist adjustment knob. Please contact us for details

FOR THE FULL RANGE VISIT OUR WEBSITE - WWW.SAMOA.LTD.UK

BULK STORAGE TANKS

BUNDED STORAGE TANKS & ACCESSORIES



TOTALLY ENCLOSED BUNDED TANKS

Steel construction storage tanks for lubricants and waste oil. Tanks can be manufactured to customer requirements and comply with environmental guidelines.

Waste oil tanks include an internal suction pipe.

Tank fitting kit included.

FOR THE FULL RANGE VISIT OUR WEBSITE - WWW.SAMOA.LTD.UK



BESPOKE TANKS

Bespoke oil and fluid storage tanks and bunds can be manufactured to most requirements. Tanks with secure cabinets contain hose reels and pumps. Specialist dispensing systems can also be manufactured.

PLEASE CONTACT US FOR DETAILS



OFFSET FILL CABINETS & ACCESSORIES

Floor or wall mounted steel offset fill cabinets available for single or multiple points. Come complete with ancillaries.

PLEASE CONTACT US FOR DETAILS

BULK STORAGE TANKS

TANK ALARMS & ACCESSORIES

UTANK BASIC TANK MONITORING UNIT



240 v mains powered stand alone tank monitoring unit. Controls up to 4 channels. Each channel can be assigned to a different tank, or multiple channels can be assigned to a single tank. Integrates an acoustic alarm (buzzer type).

Each channel has a digital input (for contact probes) that triggers a 24 v DC output (for controlling solenoid valves, relays, external audible/visual alarms). Single button for setup. Key switch for bypass mode control.

The system can be used to prevent tank overflow (maximum level sensor) or to prevent pump running dry and air entering the oil distribution lines (low level sensor).

Stand-alone unit, cannot be integrated into a NEX.U.® system.

383101 - UTANK BASIC

TANK ALARM PROBES

- 382201200 - HIGH LEVEL WARNING PROBE
- 382201203 - HIGH/LOW LEVEL WARNING PROBE
- 382202200 - BUND LOW LEVEL WARNING PROBE
- 382201 - ADJUSTABLE TANK LEVEL GAUGE



TANK ALARM ACCESSORIES

- 382005 - REMOTE FLASH & ACOUSTIC ALARM
- 389016 - SOLENOID VALVE FOR COMPRESSED AIR/PUMP CONTROL
- 389021 - ELECTRO-PNEUMATIC SOLENOID VALVE 1-1/2"







For the full range of SAMOA products visit our website
<https://samoa.ltd.uk>

SAMOA Ltd
Asturias House
Barrs Fold Road
Wingates Industrial Park
Westhoughton
BL5 3XP

Tel: 01942 850600

Web: samoa.ltd.uk

Email: info@samoa.ltd.uk

