

# Oetiker SMART TOOL

## Technical Information



Part Number: OET14100637

### Oetiker SMART Tool

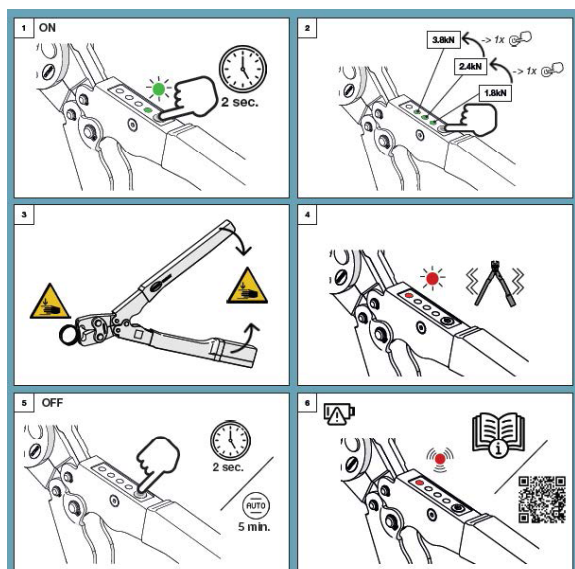
Oetiker SMART is the first manual pincer on the market with multiple force monitored closure capabilities. Suitable for all Oetiker ear clamps, it ensures a secure and reliable clamp closure and eliminates the need for calibration, making it an essential addition to your tool box!

- Proper clamp closure with force monitoring
- Quick and easy assembly
- One hand operation
- Suitable for use with Oetiker ear clamps



With its integrated sensor, which uses LED lights and a vibration signal, the Oetiker SMART tool indicates when the pre-selected force is reached, ensuring secure clamp closing and preventing over-clamping.





## Smart Working; simply select the clamp force you need...

- Select the clamp according to the application requirements
- Select the closing force - Oetiker SMART tool offers three different closing forces 1800, 2400 & 3800 N



Turn on the pincer by pressing ON/OFF for 2 seconds



Set the closing force by clicking ON/OFF



Close the clamp until it indicates the selected force with the light & vibration (press the handles like a regular pincer)



Turn off the pincer by pressing the ON/OFF for 2 seconds. If it is not turned off, it will turn off by itself after 5 minutes.

### Maintenance cycle

If the force indicator is flashing, the battery must be changed.

### Spare parts

Battery SAFT LS14500 3.6 V AA

### Product damaging parameters

The tool has passed the drop resistant test, but it should be handled with care to avoid high impact, e.g. not used as a hammer.

The tool has passed a water splash tests. This does not mean the tool can be dipped in water. Operating parameters

- Temperature -5 to +50 °C
- Designed to work in a humid environment

### Materials

Handle: 1050 (ASTM). Plastisol, polyolefin. Jaws: 42CrMo4 (EN 1.7225)



## Turning off pincer

Press the switch button (8) for 2 seconds and all LEDs will light up and then go off from top to bottom. The pincer will be turned off automatically, if it hasn't had any operations for 5 minutes.

## Battery Replacement

Low power indication. The force indicator LED (6) will flash when the battery runs in low power mode. The pincer will turn off automatically if the battery runs out of power.

**1. Slide out the protective cap from battery housing (9).**

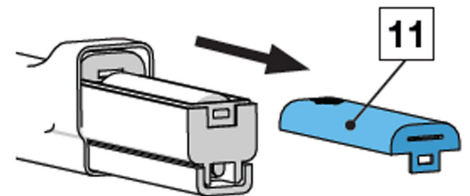
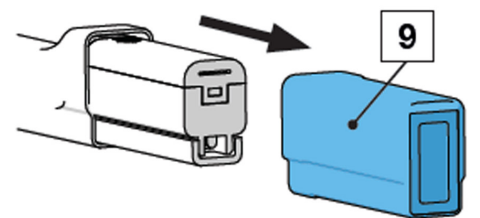
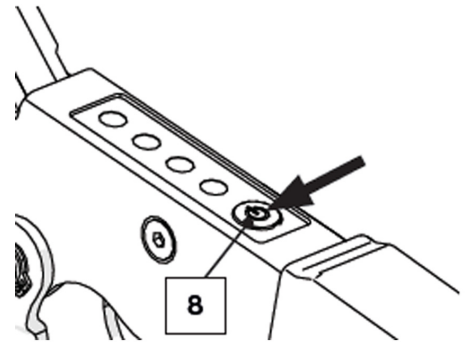
**2. Remove the carrier cover (11) and replace the battery.**

## Closing Operation

1. Grab the ear of an Oetiker ear clamp into the clamping zone between the pincer jaws.

2. Squeeze the handles of the pincer together to close the ear. Once the target force is achieved, the LED (6) and vibrator will be triggered. The closing process should be stopped when the target force is reached.

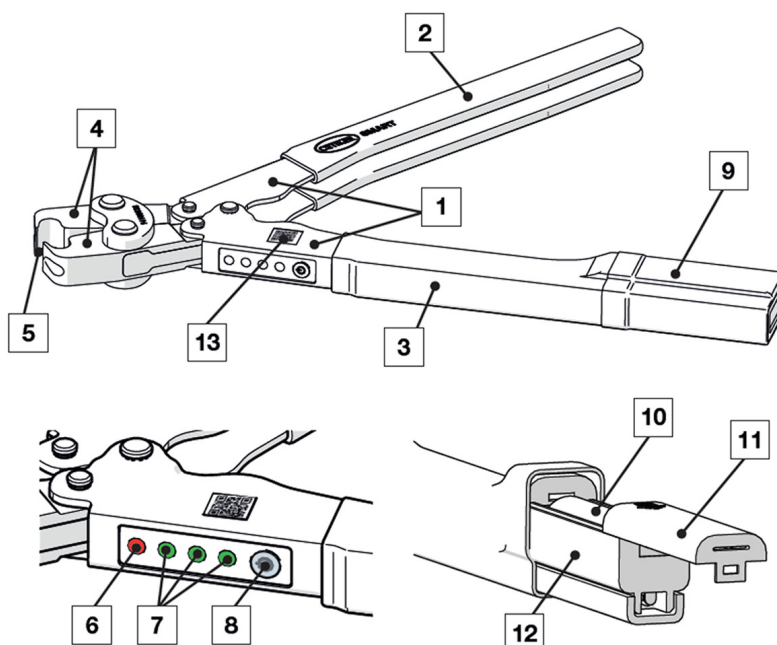
3. Release the handles of the pincer after the clamp is closed. The pincer is ready for next clamping operation.



## Structure & description

### The SMART pincer consists of:

1. Handles
2. Handle grip
3. Shrink hose
4. Pincer jaws
5. Clamping zone
6. Force indicator (LED)
7. Force stage indicator (LED)
8. On/Off Switch button
9. Protective cap
10. Battery only SAFT LS14500 3.6 V
11. Battery container cover
12. Carrier
13. QR-Code



## Safety Instructions

The SMART pincer is intended for closing Oetiker ear clamps.  
The pincer, must not be used for imparting blows (as a hammer)  
or otherwise as a manual tool.

The manufacturer is not liable for any damage resulting from improper use or incorrect operation.



### CAUTION

Please ensure you take care when closing the pincer jaw, as fingers could be injured accidentally.  
Never insert a finger into the clamping zone of the manual pincer.