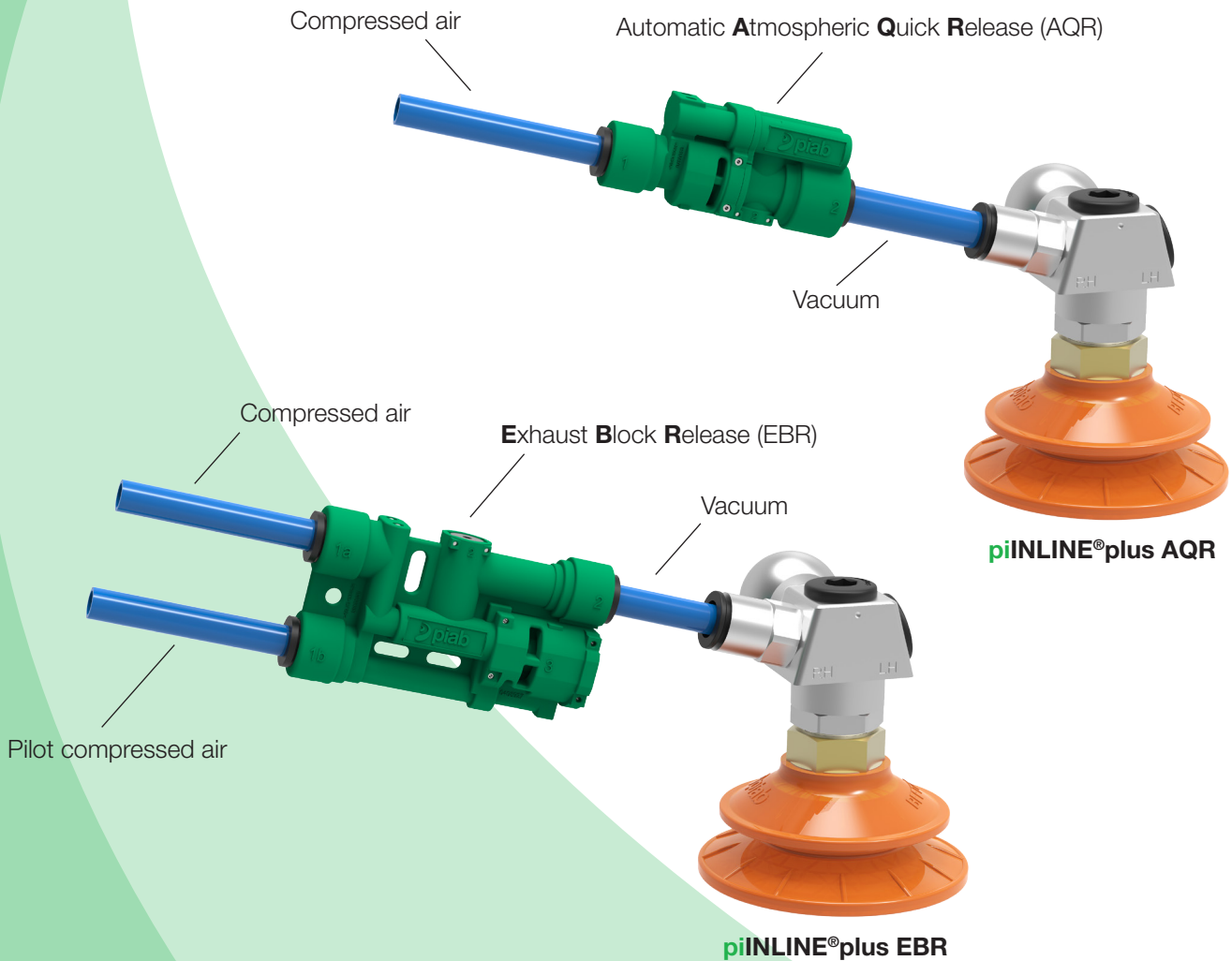


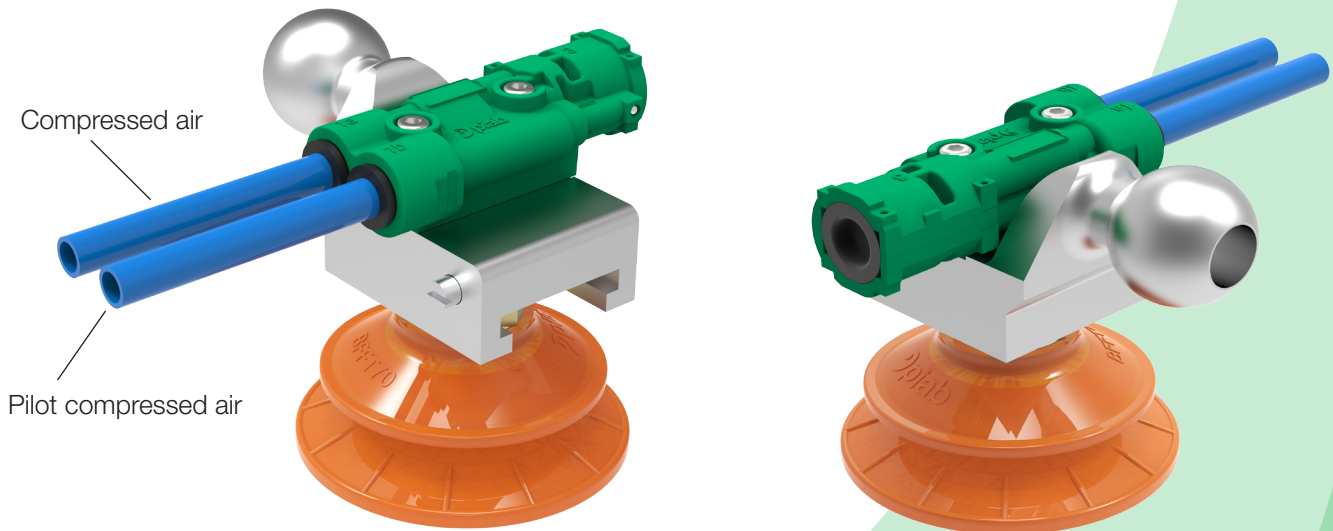
## piINLINE®plus



### The piINLINE®plus is an inline vacuum generator optimized for the automotive industry. Why?

- The first inline vacuum generator with an alternative to use atmospheric air as an option to release products for saving compressed air
- 25% more energy efficient compared to the competition due to using the most energy efficient way to generate vacuum - the patented COAX® technology
- Efficient use of the compressed air to release the products (AQR)
- Short installation time thanks to the push in connection
- Provides one of the absolutely best solutions when looking for low weight end of arm tooling thanks to its super light weight
- Global fit thanks to its availability in both metric and imperial connections
- High reliability with improved uptime as the release function is based on a durable dust-proof membrane
- Extremely long lifetime as it can be disassembled and cleaned instead of buying a replacement
- Outstanding performance in the entire feed pressure range of 4.5-6 bar [65-87 psi]

# piSTAMP



piSTAMP EBR

## The piSTAMP, a fantastic vacuum generator especially focusing on the stamping application. Why?

- Easy retrofit with generic installation footprint and design
- 25% more energy efficient compared to the competition due to using the most energy efficient way to generate vacuum - the patented COAX® technology
- Short installation time thanks to the push in connection
- Very fast release function using the exhaust air to release the product- Exhaust Block Release (EBR)
- Global fit thanks to its availability in both metric and imperial connections
- Provides one of the absolutely best solutions when looking for low weight end of arm tooling thanks to its super light weight
- High reliability with improved uptime as the release function is based on a durable dust-proof membrane
- Extremely long lifetime as it can be disassembled and cleaned instead of buying a replacement
- Outstanding performance in the entire feed pressure range of 4.5-6 bar [65-87 psi]