

Safety Relief Valves

- Repeatable Bubble-Tight Sealing Performance





The Company

Seetru Limited was founded in 1949 with the aim of producing the finest liquid level gauges so customers could see the true level even under the most severe conditions.

This philosophy of making the finest through innovation continued with the introduction of the Seetru range of pressure relief devices, circa 1950 the Seetru Tutchtite-sealing system revolutionized the safety valve market with valves that do not leak even after repeated popping even at high pressures.

Today, Seetru have an extensive range of [Pressure Relief Valves](#) and [Liquid Level Gauges](#) which carry a wide range of international approvals and are supplied worldwide.

Our Products

Seetru are manufacturers of safety relief and other special purpose ancillary valves for a wide range of compressed air, industrial gas, refrigerants, powder, steam, liquid and liquefied gas applications. These valves meet important international standards which include: BS 6759 Parts 2 & 3, AD-Merkblatt A2, ISO 4126 and ASME Section VIII design codes as well as type test approvals from TÜV and the National Board. The products comply with the requirements of the European Pressure Equipment Directive (PED) and are available with both the CE mark as well as the UV stamp, and have wide international approvals such as the EAC (TR CU) customs union certification and declaration (Russia, Belarus and Kazakhstan) and the Canadian CRN.

Seetru also has a wide range of special purpose valves. The range includes [Change-Over Valves](#) (designed for switching parallel safety valves without interrupting operation), [Minimum Pressure Check Valves](#) (typically suitable for application on compressors), [Air-Start Valves](#) (designed to handle a two-stage operation for air starting of engines). We also manufacture a range of [Air Receiver & In-line Check Valves](#).

Seetru liquid level gauges are primarily of two types, sight gauges and magnetic float by-pass gauges. Many of the gauges are direct reading though most have optional electronic remote reading systems and computer interfaces. The range includes the Quickmount, Seemag and CPI gauges for industrial and chemical applications and the Seeflex and Seemag for marine applications.

The company's substantial design and development department, which includes TÜV approved testing facilities, enabling us to provide extensive bespoke design, advisory and manufacturing services to develop or adapt individual products for new applications.



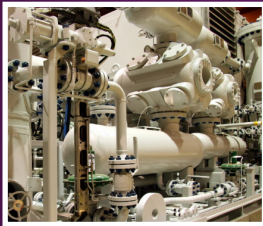
Compressed Air & Gas

Air/gas compressors
 Technical gases and CO₂ plants
 Chemical equipment and piping
 Pressure vessels/receivers and piping systems containing air or gases
 Thermal relief
 Rail Industry
 Medical gases



Steam

Autoclaves and sterilizers
 Breweries
 Clean steam
 Pharmaceutical industry
 Coffee machines
 Multi-purpose plants
 Steam boilers and plants



Cryogenic & Liquefied Gas

Pressure vessels/receivers, pressure equipment and piping
 Cryogenics including oxygen and special gases
 Medical gas equipment
 Cryogenic compressor applications
 Container lorries, cryogenic trailers, LPG/LNG terminals, carriers etc.
 Industrial freezing
 Liquefied gas storage
 Fire fighting equipment



Refrigeration

Compressor manufacture
 Industrial refrigeration
 Commercial refrigeration
 Ice making machinery
 Air conditioning



Liquid

Pumping systems and Hydraulic systems
 Thermal relief
 Waste water management
 Oil transfer
 Petrochemical industries
 Fire fighting equipment
 Water cooling and feeding systems



Auxiliary Valves

Minimum pressure check valves
 Change over valves
 Air start valve (GS56)



Testing Equipment

Seetru Quicktester™
 Seetru Compu-Test™



Approvals

Company Approvals
 Safety Valve Approvals



The Seetru 'GA' & 'GP' Range

The Seetru range of safety valves for compressed air and gas are compact, highly efficient and incorporate the exclusive Tutchtite® seal technology for repeatable bubble-tight sealing performance. Designed for applications including; air/gas compressors, specialist gas plants, chemical equipment and piping, pressure vessels, thermal relief and medical gases etc.

These valves are manufactured in bronze, brass or stainless steel and offer a wide range of connections, for applications up to 250 °C. Manufactured in accordance with a wide range of international standards and approvals such as TÜV (Germany) to AD Merkblatt A2, National Board UV Stamp to ASME Section VIII Division 1, EAC (TR CU) Customs Union Certification and Declaration (Russia, Belarus and Kazakstan). The Seetru valve range is also compliant with the requirements of the Pressure Equipment Directive (CE marked).

These valves are available with a wide range of sealing materials and technologies as well as a comprehensive range of manual relieving devices to suit application requirements.

GA 818, 730, 616, 106, 311

Connections	BSP & NPT	From 1/4"	To 2 1/2"
Pressure range	bar psi	0.27 3.91	55 798

Brass construction with elastomer sealing.

Most models can be fitted with stainless steel inlet adaptors or inlet seats and downward deflecting shrouds.

The GA106 is suitable for powder and particle laden media, a lightweight aluminium version is also available.

Inlet Seat	Body	DN (Bore Size - mm)
BRASS ST-STEEL	BRASS	6 • 8 • 10 • 13 • 15 • 18 • 20 • 25 • 40



GA 740, 848

Connections	BSP & NPT	From 1/4"	To 1/2"
Pressure range	bar psi	0.27 3.91	21 304.50

Stainless steel construction with elastomer sealing.

Inlet Seat	Body	DN (Bore Size - mm)
ST-STEEL	ST-STEEL	8



GA 550, 312, 311 (High Pressure)

Connections	BSP & NPT	From 1/4"	To 3/4"
Pressure range	bar psi	20.60 298.70	448.20 6498.90

Brass construction with elastomer sealing.

Models can be fitted with stainless steel inlet adaptors or inlet seats and downward deflecting shrouds.

Inlet Seat	Body	DN (Bore Size - mm)
BRASS ST-STEEL	BRASS	3 • 4



GP 331, 329, 636, 646, 656

Connections	BSP & NPT	From 1/4" x 3/8"	To 1 1/2" x 2"
Pressure range	bar psi	0.30 4.35	370 5365

Available in brass, bronze with brass wetted parts, bronze with stainless steel wetted parts or stainless steel. These valves are supplied with elastomer sealing.

Inlet Seat	Body	DN (Bore Size - mm)
BRASS ST-STEEL	BRASS / BRONZE ST-STEEL	3 • 6 • 10 • 13 • 18 • 20 • 25



GP 646 (Clean Gas Service)

Connections	Tri-clamp®	From 1/2" x 3/4"	To 1" x 1"
Pressure range	bar psi	0.48 6.98	55.20 800.40

Manufactured in stainless steel with a range of fine surface finishes for protection of installations in which clean service is required only on the inlet. Supplied with FDA compliant elastomer sealing with Tri-clamp® inlet and threaded outlet.

Inlet Seat	Body	DN (Bore Size - mm)
ST-STEEL	ST-STEEL	10 • 13



Sealing
Perfluorelastomer

GP 936, 946

Connections	BSP & NPT	From 1/2" x 1"	To 2" x 2"
Pressure range	bar psi	0.30 4.35	28 406

Available in brass, bronze or stainless steel with brass or stainless steel wetted parts, all supplied with metal-to-metal sealing.

Inlet Seat	Body	DN (Bore Size - mm)
BRASS ST-STEEL	BRASS / BRONZE ST-STEEL	10 • 15 • 20 • 25



Sealing
Metal-to-Metal

GP 359

Connections	BSP & NPT	From 3/8" x 1/2"	To 1/2" x 1/2"
Pressure range	bar psi	35 507.50	500 7250

Stainless steel construction with a stainless steel ball seal.

Inlet Seat	Body	DN (Bore Size - mm)
ST-STEEL	ST-STEEL	4.6



Sealing
Metal Ball

1

Compressed Air & Gas



Not all models are approved to all standards, full details upon request

2

Steam

EAC

UV

CE

TUV

Not all models are
approved to all standards,
full details upon request

The Seetru 'SA' & 'SP' Range

The Seetru range of safety valves for steam applications are compact and highly efficient, designed with the exclusive Tutchtite® sealing technology offering repeatable bubble-tight sealing performance. Typical uses of these valves include autoclaves, pharmaceutical industry, vending machines, hot water boilers, steam boilers and plants as well as clean steam applications. Suitable for use up to 250 °C and minimum dryness factor of 0.97.

Manufactured in accordance with a wide range of international standards and approvals such as TÜV (Germany) to AD Merkblatt A2, National Board UV Stamp to ASME Section VIII Division 1, EAC (TR CU) Customs Union Certification and Declaration (Russia, Belarus and Kazakhstan). The Seetru valve range is also compliant with the requirements of the Pressure Equipment Directive (CE marked).

These valves are available with a wide range of sealing materials and technologies as well as a comprehensive range of manual relieving devices to suit application requirements.

SA 319, 750

Connections	BSP & NPT	From 1/4"	To 3/8"
Pressure range	bar psi	0.27 3.91	5 72.50

Manufactured in brass. Supplied with a pull ring easing gear as standard. These valves are fitted with silicone or EPDM elastomer sealing.

Inlet Seat	Body	DN (Bore Size - mm)
BRASS	BRASS	8



Sealing
Silicone

SP 936, 946

Connections	BSP & NPT	From 1/2" x 1"	To 2" x 2"
Pressure range	bar psi	0.30 4.35	28 406

Available in brass, bronze or stainless steel with brass or stainless steel wetted parts, all supplied with metal-to-metal sealing.

Inlet Seat	Body	DN (Bore Size - mm)
BRASS ST-STEEL	BRASS / BRONZE ST-STEEL	10 • 15 • 20 • 25



Sealing
Metal-to-Metal

SP 636, 646, 656 (Low Pressure)

Connections	BSP & NPT	From 3/8" x 3/4"	To 1 1/2" x 2"
Pressure range	bar psi	0.32 4.64	12 174

Available in bronze with brass wetted parts, bronze with stainless steel wetted parts or stainless steel, in all cases these valves are supplied with elastomer sealing including; silicone, EPDM and perfluoroelastomer.

Inlet Seat	Body	DN (Bore Size - mm)
BRASS ST-STEEL	BRONZE ST-STEEL	10 • 13 • 18 • 20 • 25



SP 646 (Clean Steam Service)

Connections	Tri-clamp®	From 1/2" x 3/4"	To 1" x 1"
Pressure range	bar psi	0.32 4.64	12 174

Manufactured in stainless steel with a range of fine surface finishes for protection of installations in which clean service is required only on the inlet. Supplied with FDA compliant elastomer sealing with Tri-clamp® inlet and threaded outlet.

Inlet Seat	Body	DN (Bore Size - mm)
ST-STEEL	ST-STEEL	10 • 13



Sealing
Perfluoroelastomer

Full technical information available upon request.

The Seetru 'CP' & 'QP' Range

The Seetru range of safety valves for cryogenic & liquefied gas applications are built using Seetru sealing technology, suitable for temperatures down to -196 °C, and pressures up to 370 bar. Available with PTFE, PPS or metal-to-metal sealing.

These valves are manufactured to meet demanding applications which include being used on pressure vessels/receivers, pressure equipment and piping, cryogenic plants including oxygen and special gases, cryogenic compressor applications, container lorry/cryogenic trailers, industrial freezing, liquefied gas storage and fire fighting equipment.

Manufactured in accordance with a wide range of international standards and approvals such as TÜV (Germany) to AD Merkblatt A2, National Board UV Stamp to ASME Section VIII Division 1, EAC (TR CU) Customs Union Certification and Declaration (Russia, Belarus and Kazakstan). The Seetru valve range is also compliant with the requirements of the Pressure Equipment Directive (CE marked).

CP 346, 356

Connections	BSP & NPT	From 3/8" x 3/4"	To 3/4" x 3/4"
Pressure range	bar psi	0.83 12.04	30.76 446.02

Available in bronze with stainless steel wetted parts or stainless steel and PTFE sealing.

Inlet Seat	Body	DN (Bore Size - mm)
ST-STEEL	BRONZE ST-STEEL	10



Sealing
PTFE

QP 329

Connections	BSP & NPT	From 3/8" x 3/4"	To 3/4" x 3/4"
Pressure range	bar psi	53 768.50	370 5365

Available in bronze with stainless steel wetted parts or stainless steel and supplied with PTFE or PPS sealing.

Inlet Seat	Body	DN (Bore Size - mm)
ST-STEEL	BRONZE ST-STEEL	6



Sealing
PTFE

CP 936, 946

Connections	BSP & NPT	From 1/2" x 1"	To 1" x 2"
Pressure range	bar psi	0.30 4.35	28 406

Available in brass, bronze or stainless steel with brass or stainless steel wetted parts, all supplied with metal-to-metal sealing.

Inlet Seat	Body	DN (Bore Size - mm)
BRASS ST-STEEL	BRASS / BRONZE ST-STEEL	10 • 15 • 20 • 25



Sealing
Metal-to-Metal

3

Cryogenic & Liquefied Gas



Not all models are approved to all standards, full details upon request

The Seetru 'RA' & 'RP' Range

The Seetru range of safety valves for refrigeration applications are designed to meet the needs of the refrigeration industry, offering safety valve technology for compressor manufacturers, industrial refrigeration, commercial refrigeration, ice making systems and air conditioning. The valves are compact and designed with bonded sealing technology and the highest possible sealing performance to comply with most stringent environmental standards. Each valve is leak tested to better than 10^{-5} mbar litres/sec on Helium. This is equivalent to a leakage rate of less than 1oz in ten years. Suitable for operating temperature in the range -30 °C to +200 °C.

Manufactured in accordance with a wide range of international standards and approvals such as TÜV (Germany) to AD Merkblatt A2, National Board UV Stamp to ASME Section VIII Division 1, EAC (TR CU) Customs Union Certification and Declaration (Russia, Belarus and Kazakhstan). The Seetru valve range is also compliant with the requirements of the Pressure Equipment Directive (CE marked).

RP 319

		From	To
Connections	NPT	$\frac{3}{8}"$	$\frac{1}{2}"$
	Flare	$\frac{1}{2}"$	$\frac{5}{8}"$
Pressure range	bar	13.50	50
	psi	195.75	725

Brass construction with bonded perfluoroelastomer sealing.

Inlet Seat	Body	DN (Bore Size - mm)
BRASS	BRASS	10



RA 818

		From	To
Connections	BSP & NPT	$\frac{1}{4}"$	$\frac{3}{8}"$
Pressure range	bar	7	36
	psi	101.50	522

Brass construction with bonded perfluoroelastomer sealing.

Inlet Seat	Body	DN (Bore Size - mm)
BRASS	BRASS	6



RP 636, 646, 656

		From	To
Connections	BSP & NPT	$\frac{3}{8}" \times \frac{3}{4}"$	$1\frac{1}{2}" \times 1\frac{1}{2}"$
Pressure range	bar	5.40	55.20
	psi	78.30	800.40

Available in bronze with brass wetted parts, bronze with stainless steel wetted parts or stainless steel. These valves are supplied with bonded perfluoroelastomer sealing.

Inlet Seat	Body	DN (Bore Size - mm)
BRASS ST-STEEL	BRONZE ST-STEEL	10 • 13 • 18



The Seetru 'LP' Range

The Seetru range of safety valves for liquid applications has been designed to be compact and highly efficient. The bubble-tight sealing performance makes these valves suitable for many liquid applications including; hydraulic systems, pumping systems, thermal relief, chemical storage, waste water management, oil transfer, petrochemical industry, fire fighting equipment and water cooling systems. Suitable for temperatures up to 250 °C.

EAC (TR CU) Customs Union Certification and Declaration (Russia, Belarus and Kazakstan). The Seetru valve range is also compliant with the requirements of the Pressure Equipment Directive (CE marked).

This range of valves has the option of either elastomer sealing or metal-to-metal sealing.

LP 670, 680, 690

Connections	BSP & NPT	From 3/8" x 3/4"	To 1 1/2" x 2"
Pressure range	bar	0.70	30
	psi	10.15	435

Available in bronze with brass or stainless steel wetted parts or stainless steel. These valves are available with a wide range of elastomer sealing.

Inlet Seat	Body	DN (Bore Size - mm)
BRASS ST-STEEL	BRONZE ST-STEEL	10 • 13 • 18 • 20 • 25



LP 970, 980

Connections	BSP & NPT	From 1/2" x 1"	To 1" x 2"
Pressure range	bar	0.30	36
	psi	4.35	522

Available in brass, bronze or stainless steel with brass or stainless steel wetted parts, all supplied with metal-to-metal sealing.

Inlet Seat	Body	DN (Bore Size - mm)
BRASS ST-STEEL	BRASS / BRONZE ST-STEEL	10 • 15 • 20 • 25



LP 680 (Clean Service)

Connections	Tri-clamp®	From 1/2" x 3/4"	To 1" x 1"
Pressure range	bar	0.70	30
	psi	10.50	435

Manufactured in stainless steel with a range of fine surface finishes for protection of installations in which clean service is required only on the inlet. Supplied with FDA compliant elastomer sealing with Tri-clamp® inlet and threaded outlet.

Inlet Seat	Body	DN (Bore Size - mm)
ST-STEEL	ST-STEEL	10 • 13



Not all models are approved to all standards, full details upon request

The Seetru 'MPCV' & 'COV' Range

The Seetru range of auxiliary valves includes Minimum Pressure Check Valves and Changeover valves. Minimum Pressure Check Valves are control valves typically suitable for application on compressors. Changeover valves allow two safety valves to be mounted side by side; with one in service and one isolated. This means regular maintenance can be carried out on one valve at a time without interruption of service or the vessel being un-protected.

MPCV 419 (Minimum Pressure Check Valve)

		From	To
Connections	BSP & NPT	R1 1/4" x G1 1/4"	3" x 3" Flanged
Pressure range	bar psi	2.28 33	13.8 200.15

Minimum pressure check valve are spring loaded pressure control valves with an in-built check (non-return) valve that maintains pressure required for the lubrication of oil-injected rotary compressors. Installed directly downstream from the air-oil separator.

Seal Material

VITON

Body

CAST IRON

ALUMINIUM
ALLOY



COV (Change Over Valve)

		From	To
Connections	BSP & NPT	1/2" x 1/2"	1" x (1 5/8" x 12 UN)
Pressure range	bar psi	55.2 800.61	65 942.75

This valve is used if a plant shutdown is impossible or undesirable for process engineering or commercial reasons. With change-over valves it is possible to switch over between parallel safety valves without interrupting operation, so that maintenance work can be carried out on each safety valve in turn.

This valve is available with a wide range of elastomers as standard, other seals are available on request. Flanged inlet connections are also available on request.

Typically used in the refrigeration industry, however they are used elsewhere and are suitable for wide industrial application.

Internal Material

MILD STEEL ZINC PLATED

ST-STEEL

Body

ST-STEEL



The Seetru Air Start Valve (GS56)

The Seetru GS56 is a high quality control valve designed to handle a two-stage operation for air starting of engines. Air starting is typically used for diesel engines. The GS56 is bolted onto the air receiver vessel and integrates all the necessary functions and connections into one highly effective unit. It controls charging of the pressure vessel with the air for starting and it controls the flow of the air to the engine to start the engine. Incoming air and outgoing air are kept separate to comply with regulations. The unit configuration is designed so that any oil or water in the air supply collects in the receiver, thus maximising the cleanliness of the air which flows to the engine.

Seetru Air Start Valve (GS56)

Air inlet and outlet connection	DIN or BS flange sizes or adapted to pipe fittings
Receiver connection	DIN or BS flange sizes
Materials of construction	Cast body in SG iron, brass and stainless steel internal parts. Gunmetal or aluminium bronze body available on request
Seal Material	Nitrile
Pressure Range	Up to 600 psi
Temperature Range	Up to 110°C



Economical in price and maintenance

Seetru is able to apply the latest large scale manufacturing technologies to ensure economic first costs. Economy in use is ensured by the ease of installation and simple maintenance procedure.

Safety valve connection

A threaded connection is provided on the manifold unit for a safety valve to protect the air receiver. Safety valves can be supplied as optional extras, contact Seetru for information on our range of safety valves. (An enclosed discharge valve may be preferred where equipment is protected by a fire control system.)

Shut-Off valve connection for pressure gauge

A connection with shut-off valve is provided on the manifold unit for a pressure gauge, which can be fitted to monitor the pressure in the air receiver. Pressure gauges can be supplied as optional extras, contact Seetru for information on pressure gauges.

Integrated inspectors test point

A connection is provided for connection of an inspectors pressure test gauge.

Fusible plug thermal protection

The GS56 has the facility for a fusible thermal plug to protect the air receiver from over-pressure due to heat (e.g. In the case of fire). The plug fuses at a defined temperature and releases the pressurized air in the receiver. Plugs are supplied as optional extras.

Siphon drain valve

An optional siphon drain valve can be supplied with the GS56. This valve is connected to a long tube, which reaches low into the receiver vessel; when opened, the pressure in the vessel forces any oil or water out through the tube.

Widely accepted worldwide approvals

Accepted by Lloyds for marine applications. Testing can be witnessed by marine approval authorities prior to despatch and certification provided at extra cost. Compliant with the requirements of the European Pressure Equipment Directive (PED) and CE Marked.

Seetru Testing Equipment

Seetru Quicktester™

BSP & NPT Connections

From 1/4" to 2"

Standard Maximum Operating Pressure

Up to 55 bar/
797.71 psi

Features & Benefits

- Simplified valve testing, for compliance with pressure systems safety & equipment regulations
- Enables rapid valve testing in complete safety
- Highly portable, compact design (subject to suitable compressed air supply)
- Suitable for use on wide range of valves
- Accurate, unambiguous pressure readout
- Very low consumption of supply medium
- Bench top or carry case version available
- Easy to use and maintain
- Manufactured to quality system compliant with ISO9001
- Supplied with comprehensive instructions
- Pressure gauges supplied as optional extras
- Supplied with a range of thread size adaptors



This compact, light weight and portable design is very robust and able to meet the demands of a busy maintenance workshop or mobile operation. The Quicktester™ can be used with plant generated air supplies or with mobile bottled gas. This test bench is supplied with a range of adaptors allowing connection between 1/4" to 1" BSP as standard, additional adaptors are available increasing the connection sizes up to 2" BSP. The Quicktester™ is also available with NPT connection adaptors on request.

Quicktester™ is a trademark of Seetru Limited

Seetru Compu-test™

- Fully computerized
- Automated and objective
- Set pressure measurement
- Electronic bubble count leak rate test
- Condition Rating® measurement
- Detailed analysis of valve operation
- Computerized full test records for certificate
- Test results printout for certificate
- Patented worldwide

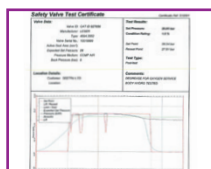


Seetru Compu-test™ is a comprehensive computerized safety valve diagnostic system add-on for conventional safety valve test benches. Using the Compu-test™ system enables objective diagnostic analysis of the critical assessment criteria for safety valves, namely:- Set Pressure, Seetru Condition Rating® and Bubble Leak Rate.



The Compu-test™ system can be used in either manual or automatic analysis modes. In automatic mode the Compu-test™ system automatically evaluates all the key diagnostic parameters extremely quickly and objectively, the user can also carry out the same evaluation entirely in manual mode. In either mode it is fast and simple to use. Experienced and inexperienced safety valve technicians will find the Compu-test™ system intuitive and easy to use.

The objective precision of the diagnostic information and the ease with which the Compu-test™ system produces objective diagnostic results strongly enhance the quality of safety valve maintenance operations. Thus leading to greatly reduced risk associated with safety valves in operation.



The electronic measurements are objective and are recorded directly into the system database for future use. The system will generate certification documentation recording all the diagnostic test data and the summary diagnostic results.



Compu-test™ is a trademark of Seetru Limited

Seetru Condition Rating® is a registered trademark of Seetru Limited

Full technical information available upon request.

Seetru Limited Approvals

Seetru Company Approvals & Memberships



Seetru is dedicated to providing its customers and distributors with the highest quality service, this is demonstrated by our accreditations which include: ISO 9001, Investor's In People, 1st Point Assessment, UDVB and together with membership of the British Valve & Actuator Association (BVAA).

Seetru Safety Valve Approvals

That's Safety!
Seetru Limited



Seetru's range of Safety Valves meet important international standards which include: BS 6759 Parts 2 & 3, AD-Merkblatt A2, BS EN ISO 4126 and ASME Section VIII design codes as well as type test approvals from TÜV and the National Board. The products comply with the requirements of the European Pressure Equipment Directive and available with both the CE mark as well as the UV stamp and have wide international approvals such as the EAC (TR CU) customs union certification and declaration (Russia, Belarus and Kazakhstan) and the Canadian CRN.

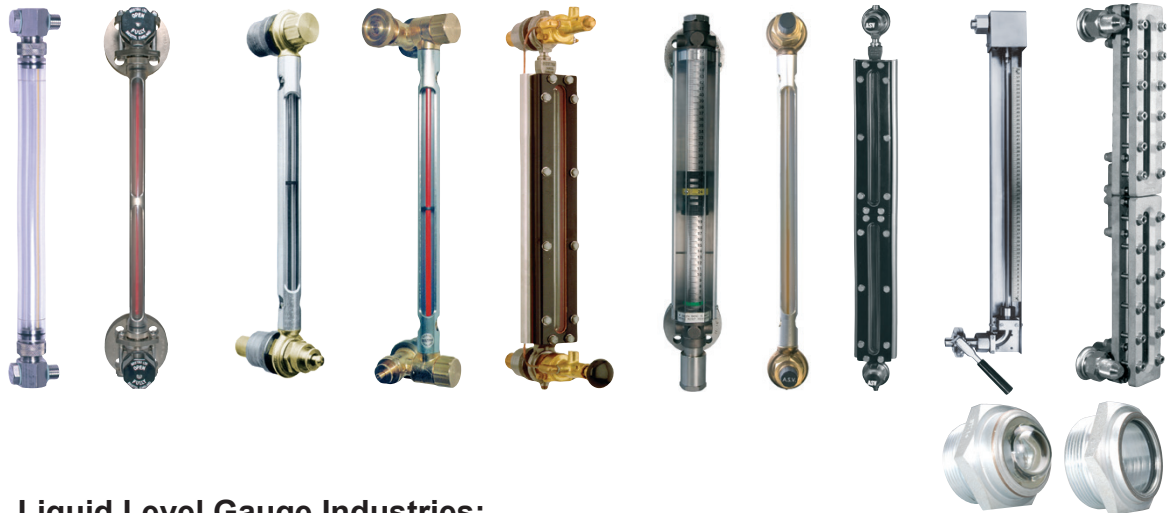
A

Approvals



Seetru Liquid Level Gauges

That's The Level!
Seetru Limited



Liquid Level Gauge Industries:

Seetru has a large range of Liquid Level Gauges suitable for many industries including:

- Chemical process
- General industrial
- Refrigeration
- Marine & Shipbuilding
- Hygienic

Liquid Level Gauge Approvals:

Seetru's range of marine gauges meets the requirements of SOLAS (Safety Of Lives At Sea), and is also type approved by many worldwide shipping authorities including:

- Det Norske Veritas (DNV)
- Lloyds Register of Shipping
- American Bureau of Shipping (ABS)
- Germanischer Lloyd
- RINA
- Nippon Kaiji Kyokai
- Bureau Veritas
- Russian Maritime Register of Shipping





Seetru Limited are internationally renowned manufacturers of pressure relief valves and liquid level gauges for a variety of industries, from compressors to ship building and power stations.

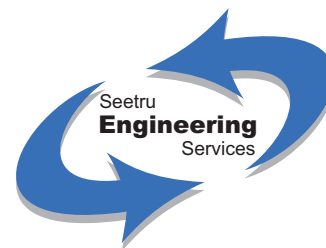
Founded in 1949 with the aim of producing the finest liquid level gauges so that customers could *see* the *true* level even under the most severe conditions.

This philosophy of making the finest through innovation continued with the inception of the Seetru range of pressure relief devices, circa 1950; the Seetru Tutchtite® sealing system revolutionized the safety valve market with valves that do not leak even after repeated popping and for high pressures.

Today, Seetru strives to produce the very best safety relief valves that can be made at a price that our customers can easily afford. Seetru valves are, for instance, used very widely in the compressor industry for their quality, low cost, low life cycle cost, durability and pressure tightness.

We haven't stopped there either, with a continual development policy we look at opportunities where we can add our distinct inventiveness to other areas and expand our business, so we now operate four additional business units:-

Seetru Engineering Services (SES) – A complete problem solving service for pressure relief valve inventories and engineering maintenance services, backed by all the resources and expertise of Seetru. SES provides on-site and off-site calibration, test, overhaul and maintenance services including site surveys and inventory management as well as maintenance planning and management. Seetru Tru-Test® technology provides state-of-the-art in-situ safety valve testing and calibration capabilities. The patented Seetru Condition Rating® technology provides for in-situ safety valve health monitoring and Risk Based Inspection management of safety valves as well as calibration.



Leser UK – Europe's largest manufacturer of safety valves, the Leser range of safety valves goes up to 16" (400mm) and includes all styles and types of safety valve, designed and manufactured to all the leading international standards including; DIN, ASME and API526. Leser valves carry comprehensive worldwide approvals and can be manufactured in a comprehensive range of standard and special materials as well as to special design criteria. The standard ranges of valves are available on very short lead times, often ex-stock

Blupax – Is a web based source and supply business offering a single source supply service for a wide range of engineering products; from safety valves to actuated ball valves, pneumatic tools and compressors to hydraulic oil pumps. Blupax can supply products normally within 7/10 days or next day for items held in stock; it is also able to add new products to meet customer's requirements, and will source products and make them available for online purchase.



Blupax Training – Blupax Training provides a comprehensive range of training courses, from all aspects of safety valve technology to courses about safety and the environment, mechanical skills, mobile lifting equipment and management training skills. The courses are modular and adaptable and can be developed to incorporate customer specific requirements. Safety valve training course modules range from principles of safety valve design, sizing and selection to practice of in-situ safety valve testing, safety valve test and maintenance as well as best engineering practice for the management of safety valve inventories.



The LGS® range is suitable for a wide variation in flow characteristics, coping with both low volume and high relief capacity applications. The single trim design means that the components are all common across liquid, gas and steam; and that any LGS® valve can be used in any of these applications.



Seetru liquid level gauges are primarily of two types, sight gauges and magnetic float by-pass gauges. Many of the gauges are direct reading though most have optional electronic remote reading systems and computer interfaces. The range includes the Quickmount, Seemag and CPI gauges for industrial and chemical applications and the Seeflex and Seemag for marine applications.



Seetru Engineering Services (SES) are the service arm of Seetru Limited who are a long established Safety Valve manufacturer of over 60 years. SES has been founded on the ability to react to customers individual requirements and to deliver total engineering solutions that improve the safety, quality, and value of our customer's activities.



A comprehensive range of flanged safety valves are available from Seetru's sister company Leser UK. LESER offers spring-loaded and pilot-operated safety valves for all industrial applications according to PED and ASME VIII as well as application-based solutions for special requirements.