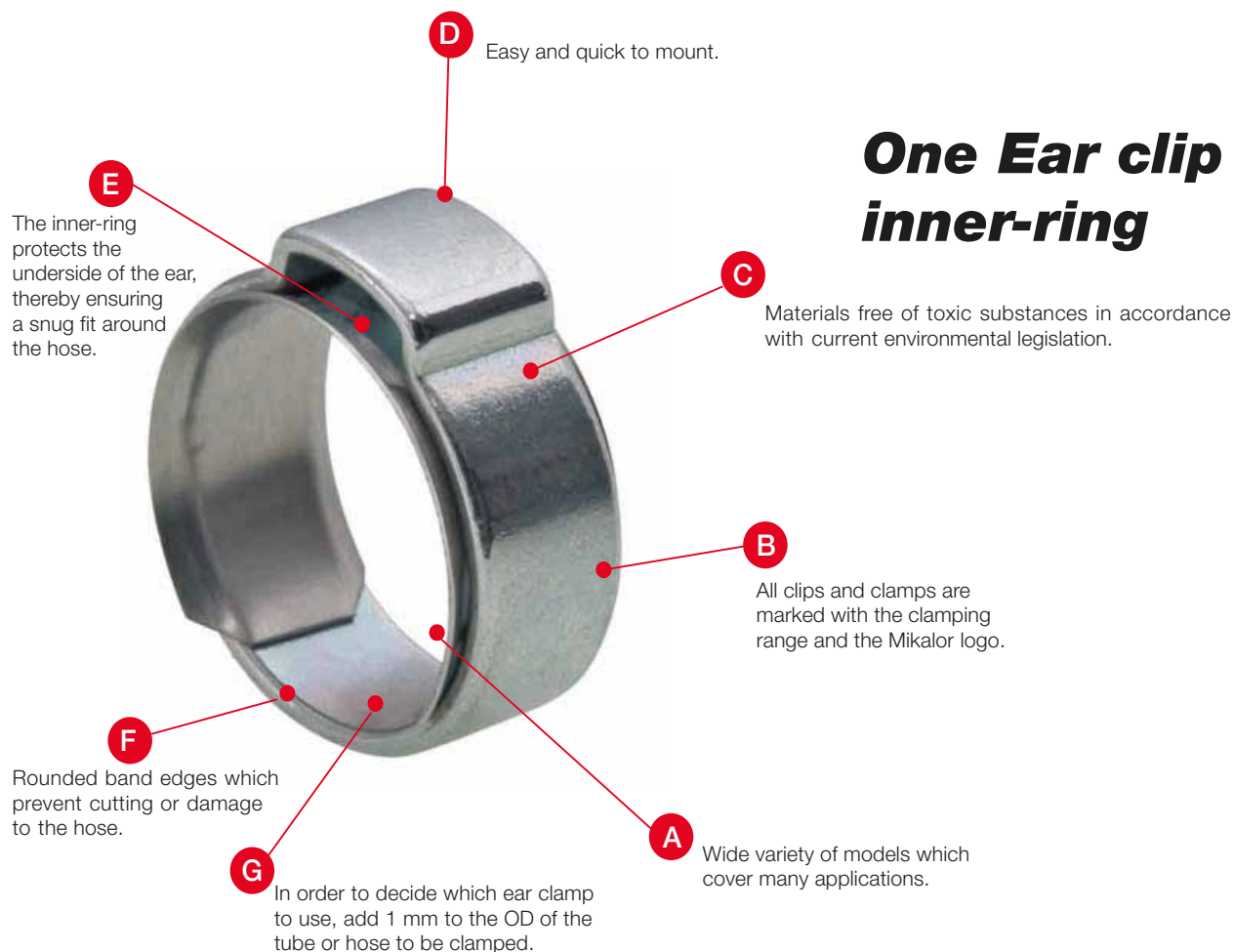


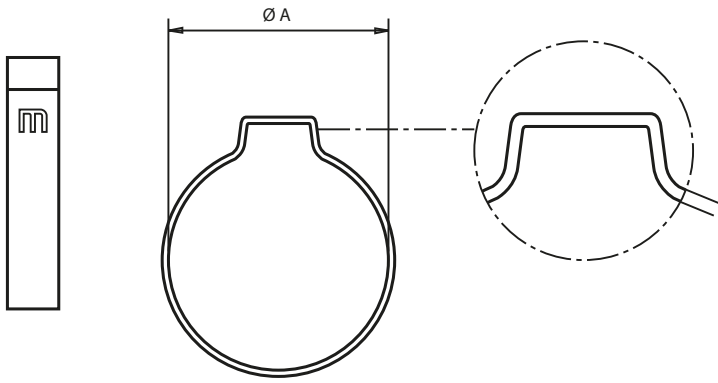
One-ear clip



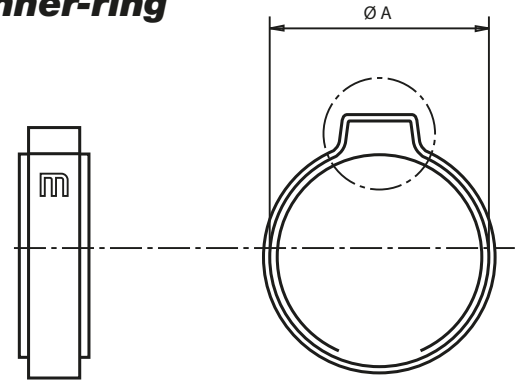
One Ear clip with inner-ring



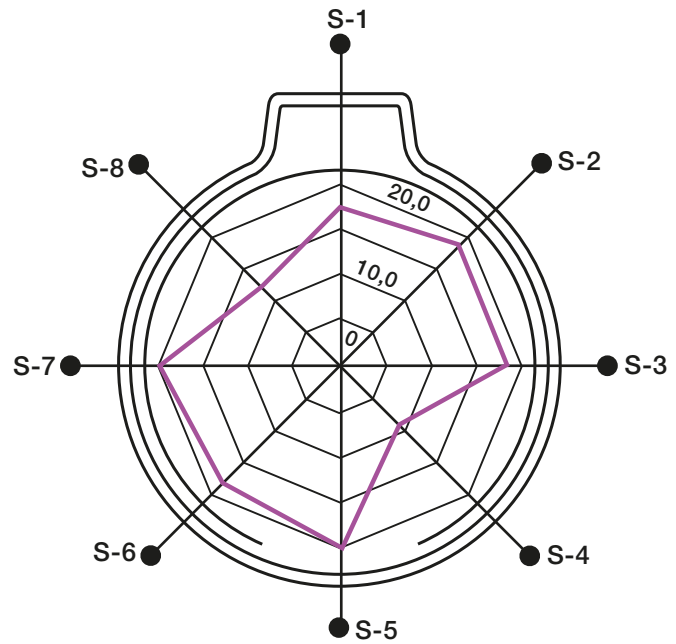
One-ear clip



One Ear clip with inner-ring



One-ear clip		Two-ear clip		One Ear clip with W4 inner-ring	
W1	W4	W1	W4	W1	W4
Ø Application	Ø Application	Ø Application	Ø Application	Ø Application	Ø Application
min. – max.	min. – max.	min. – max.	min. – max.	min. – max.	min. – max.
7 – 9	7 – 9	5 – 7	5 – 7	7,5 – 8,5	7,5 – 8,5
8 – 10	8 – 10	7 – 9	7 – 9	8,0 – 9,5	8,2 – 9,5
9 – 11	9 – 11	9 – 11	9 – 11	9,0 – 10,5	9,0 – 10,5
10 – 12	10 – 12	11 – 13	11 – 13	10,0 – 11,5	10,0 – 11,5
11 – 13	11 – 13	13 – 15	13 – 15	10,5 – 12,5	10,5 – 12,5
12 – 14	12 – 14	14 – 17	14 – 17	11,5 – 13,3	11,5 – 13,5
14 – 16	13 – 15	15 – 18	15 – 18	13,0 – 15,3	12,5 – 14,5
16 – 18	14 – 16	17 – 20	17 – 20	15,0 – 17,3	13,0 – 15,3
	15 – 17	18 – 21	18 – 21		14,0 – 16,3
	16 – 18	20 – 23	20 – 23		15,0 – 17,3
	17 – 19	22 – 25	22 – 25		16,0 – 18,3
	18 – 20				17,0 – 19,3



Polar Diagram

Sectors	S1	S2	S3	S4	S5	S6	S7	S8	Average
Force Kg	16,1	17,8	18,1	8,2	20,4	18,8	19,8	11,2	16,3

Torque / Efficiency [Nm / daN]

Materials



One-ear clip
W1 / W4

W1

Band:
St 34 steel (DIN 2393 C)

Finish:
Silver-white Cr3 Zinc-Plated



Two-ear clip
W1 / W4

W4

Band:
AISI-304
Stainless steel (A2)

Finish:
100% Stainless steel



One Ear clip with inner-ring
W1 / W4

W1

Band:
St 34 steel (DIN 2393 C)

Finish:
Silver-white Cr3 Zinc-Plated

Inner-ring:
AISI-301 Stainless steel

W4

Band:
AISI-304 Stainless steel (A2)

Finish:
100% Stainless steel

Inner-ring:
AISI-301 Stainless steel



MIKALOR

C/ Garraf 10-12 , Pol. Ind. Pla de la Bruguera
08211 Castellar del Vallès - Barcelona - Spain
Telf. +34 93 729 96 11 - Fax +34 93 714 37 29
www.mikalor.com / www.damesa.com

