




Shut-off and control technology



A line of ball valves and ideas



 Valves	141
• Check valves	142
• with threaded connector	142
• with ISO-flange connection (SAE)	144
• for manifold mounting	148
• Needle valves	150
• with threaded connector	150
• for manifold mounting	152
• for manifold insertion as cartridge type	154
• Flow control valves	156
• with threaded connector	156
• for manifold mounting	158





Check valves

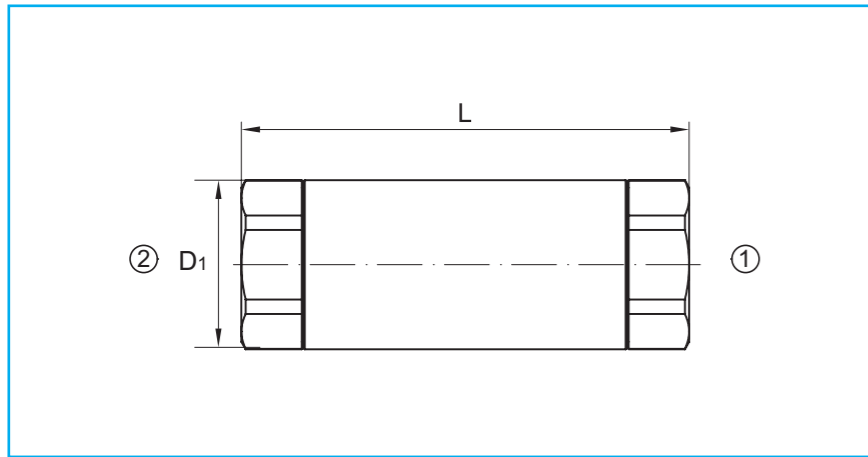


Needle valves

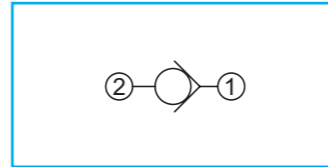


Flow control valves

Check valves with threaded connector · steel · DN 4 - DN 50



**Full flow,
no reduction!**



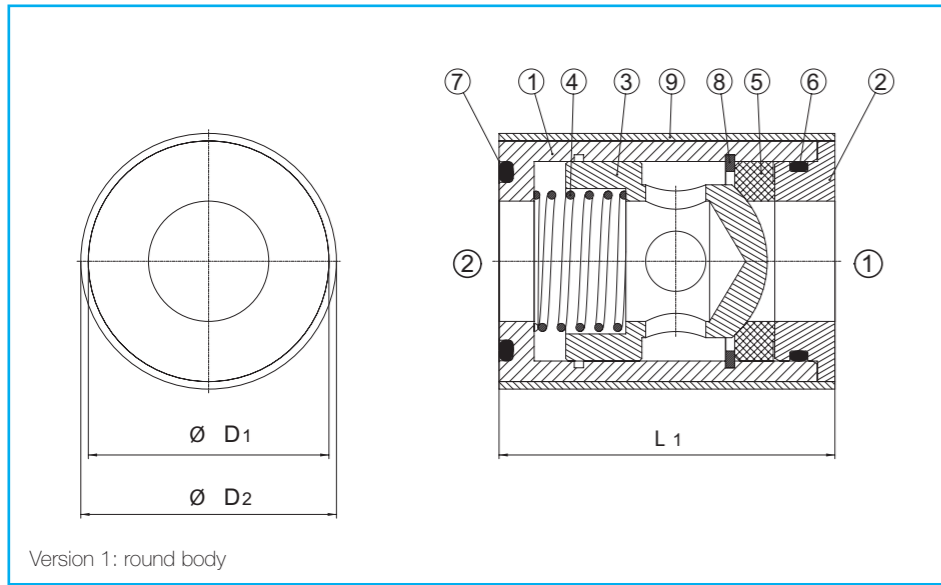
Please check pressure rating of the pipe fittings!
 Custom orders on request
 All dimensions subject to change without notice
 Also available with most other connections
 Dimensions in mm
 Weight in kg
 Pressure in bar

Body: steel, zinc plated
 Seat: POM
 O-Rings: FKM

Connection	DN	Thread D	OD	L	L ₁	D ₁	SW	Opening-pressure	Weight	DN	PN	Article-No.
For cut (clamp) ring tube fittings DIN 2353 light series ISO 8434-1	4	M12 x 1,5	6	88,0	10	21,0	19	1,0	0,18	4	420	233 033
	6	M14 x 1,5	8	88,0	10	21,0	19	1,0	0,18	6	420	233 034
	8	M16 x 1,5	10	85,0	11	27,0	24	0,5	0,27	8	420	233 036
	10	M18 x 1,5	12	87,0	11	27,0	24	0,5	0,27	10	420	233 037
	12	M22 x 1,5	15	105,0	12	33,5	30	0,5	0,46	12	420	233 038
	16	M26 x 1,5	18	100,0	12	45,0	36	0,5	0,78	16	420	233 040
	20	M30 x 2	22	126,0	14	45,0	41	0,5	1,00	20	420	233 041
	25	M36 x 2	28	137,0	14	55,0	50	0,5	1,75	25	420	233 042
	32	M45 x 2	35	174,5	16	70,0	60	0,5	3,00	32	420	233 044
	40	M52 x 2	42	196,5	16	86,0	75	0,5	5,40	40	420	233 045
For cut (clamp) ring tube fittings DIN 2353 heavy series ISO 8434-1	4	M16 x 1,5	8	94,0	12	21,0	19	1,0	0,18	4	420	233 031
	6	M18 x 1,5	10	94,0	12	21,0	19	1,0	0,18	6	420	233 054
	8	M20 x 1,5	12	89,0	12	27,0	24	0,5	0,27	8	420	233 032
	10	M22 x 1,5	14	93,0	14	27,0	24	0,5	0,27	10	420	233 055
	12	M24 x 1,5	16	109,0	14	33,5	30	0,5	0,46	12	420	233 056
	16	M30 x 2	20	108,0	16	45,0	36	0,5	0,83	16	420	233 035
	20	M36 x 2	25	134,0	18	45,0	41	0,5	1,00	20	420	233 057
	25	M42 x 2	30	149,0	20	55,0	50	0,5	1,75	25	420	233 058
	32	M52 x 2	38	185,5	22	70,0	60	0,5	3,20	32	420	233 053
	BSP-female thread DIN EN ISO 228-1	4	G 1/8	-	90,0	12	21,0	19	1,0	0,18	4	420
6		G 1/4	-	90,0	12	21,0	19	1,0	0,18	6	420	233 059
10		G 3/8	-	85,0	14	27,0	24	0,5	0,27	10	420	233 060
12		G 1/2	-	104,0	15	33,5	30	0,5	0,46	12	420	233 061
16		G 5/8	-	106,0	18	45,0	36	0,5	0,90	16	420	233 043
20		G 3/4	-	120,0	18	45,0	41	0,5	1,00	20	420	233 062
25		G 1	-	142,0	18	55,0	50	0,5	1,75	25	420	233 063
32		G 1 1/4	-	151,5	20	70,0	60	0,5	2,90	32	420	233 046
40		G 1 1/2	-	184,5	22	86,0	75	0,5	5,60	40	420	233 047
50		G 2	-	225,0	24	106,0	95	0,5	10,00	50	420	233 048
NPT-female thread ANSI/ASME B1.20.1-1983	4	1/8 - 27 NPT	-	90,0	6,9	21,0	19	1,0	0,18	4	420	233 049
	6	1/4 - 18 NPT	-	90,0	10,0	21,0	19	1,0	0,18	6	420	233 064
	10	3/8 - 18 NPT	-	85,0	10,3	27,0	24	0,5	0,27	10	420	233 065
	12	1/2 - 14 NPT	-	104,0	13,6	33,5	30	0,5	0,46	12	420	233 066
	20	3/4 - 14 NPT	-	120,0	14,1	45,0	41	0,5	1,00	20	420	233 067
	25	1 - 11 1/2 NPT	-	142,0	16,8	55,0	50	0,5	1,75	25	420	233 068
	32	1 1/4 - 11 1/2 NPT	-	151,5	17,3	70,0	60	0,5	2,85	32	420	233 050
	40	1 1/2 - 11 1/2 NPT	-	184,5	17,3	86,0	75	0,5	5,60	40	420	233 051
	50	2 - 11 1/2 NPT	-	225,0	17,7	106,0	95	0,5	10,00	50	420	233 052

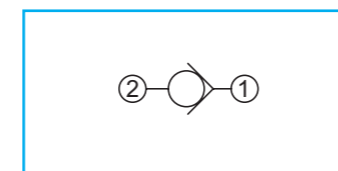
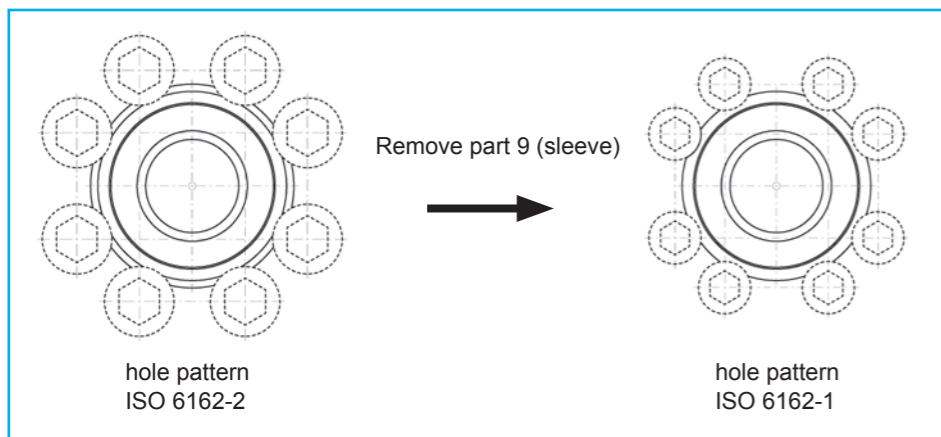
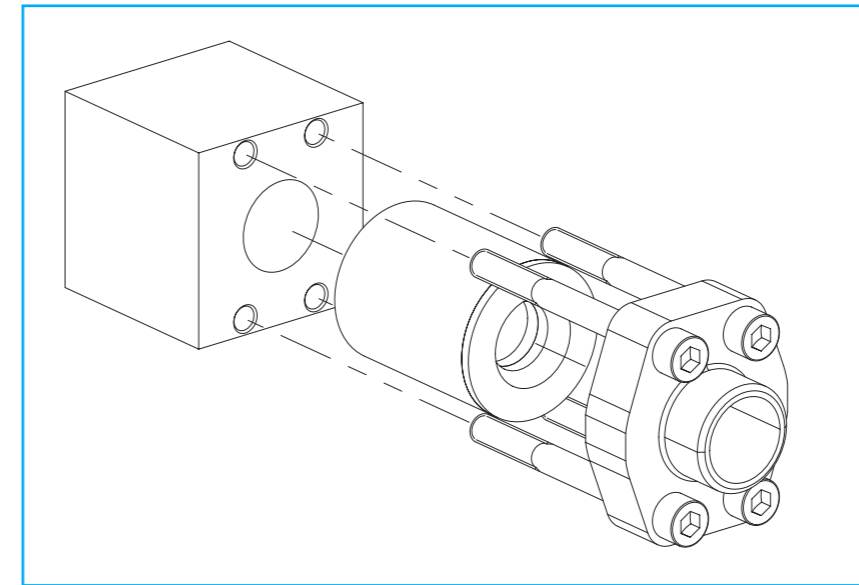


Check valves with ISO-flange connection (SAE) · steel · DN 13 - DN 51



Please check pressure rating acc. to ISO 6162
 Custom orders on request
 All dimensions subject to change without notice
To turn the direction of the flow switch part 3, 4, 5 and 8
Remove part 9 for ISO 6162-1
 Dimensions in mm
 Weight in kg
 Pressure in bar

- ① Body
- ② Cap
- ③ Piston
- ④ Spring
- ⑤ Seat
- ⑥ O-Ring
- ⑦ O-Ring
- ⑧ Inverted ring
- ⑨ Sleeve



Connection

ISO 6162-1/-2

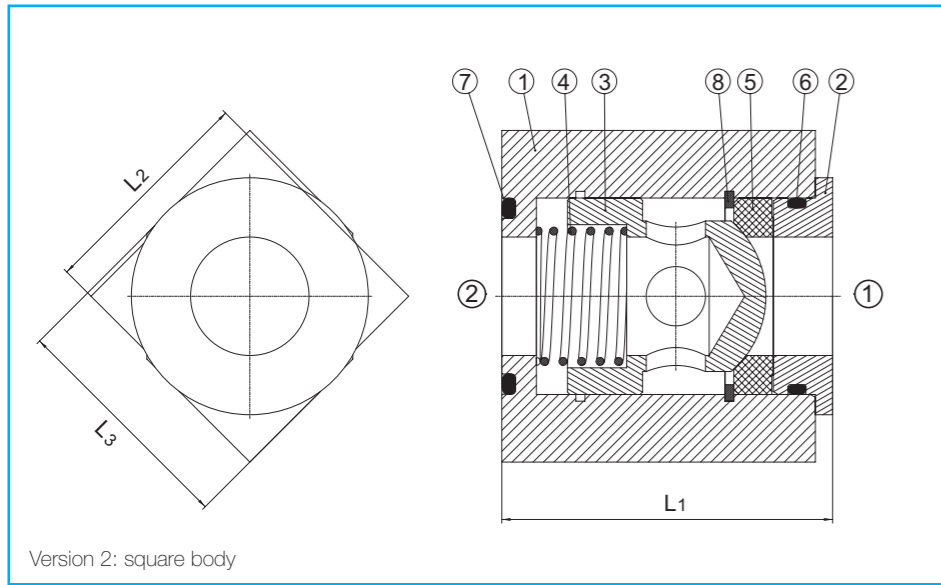
DN	L1	D1	D2	Opening-pressure	Weight
13	47,0	33,5	36,0	1	0,24
19	59,0	42,0	46,0	1	0,40
25	67,0	48,0	51,0	1	0,57
32/25	70,0	55,0	61,0	1	0,92
38/32	80,0	65,0	70,0	1	1,28
51/32	82,0	76,0	86,0	1	2,12

Steel, zinc plated/POM-FKM

PN	Article-No.
420	233 091
420	233 092
420	233 093
420	233 094
420	233 095
420	233 096



Check valves with ISO-flange connection (SAE) · steel · DN 13 - DN 51



Please check pressure rating acc. to ISO 6162
Custom orders on request

All dimensions subject to change without notice

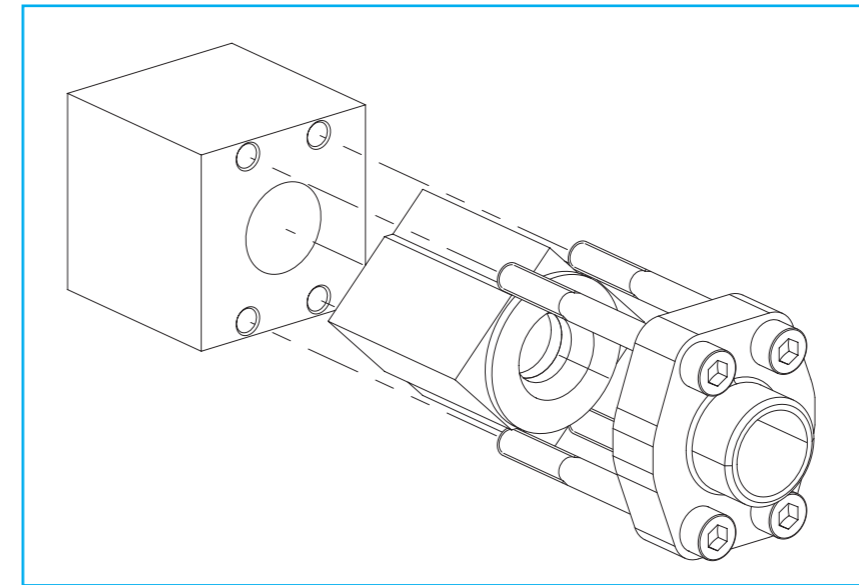
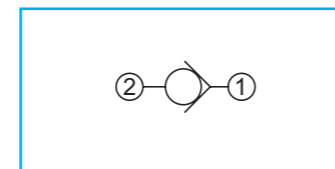
**To turn the direction of the flow switch
part 3, 4, 5 and 8**

Dimensions in mm

Weight in kg

Pressure in bar

- ① Body
- ② Cap
- ③ Piston
- ④ Spring
- ⑤ Seat
- ⑥ O-Ring
- ⑦ O-Ring
- ⑧ Inverted ring



Connection

ISO 6162-1/-2

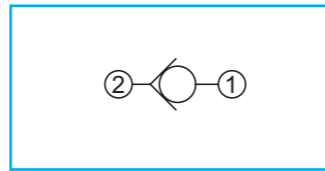
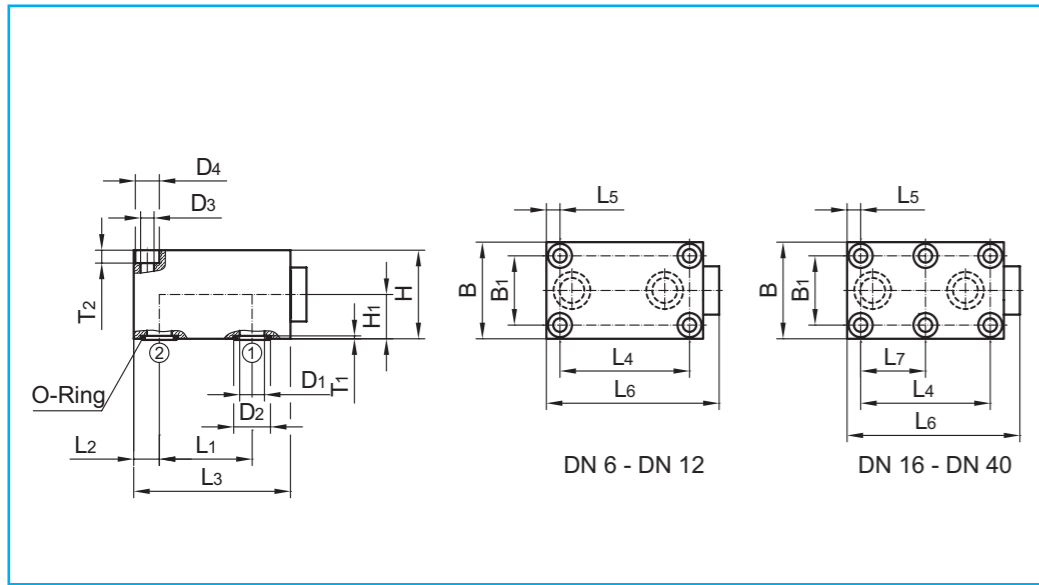
DN	L1	L2	L3	Opening-pressure	Weight
13	47,0	31,0	33,4	1	0,30
19	59,0	39,0	41,5	1	0,50
25	67,0	45,5	47,5	1	0,74
32/25	70,0	52,0	57,0	1	1,22
38/32	80,0	62,0	65,0	1	1,67
51/32	82,0	73,0	79,0	1	2,87

Steel/POM-FKM

PN	Article-No.
420	233 097
420	233 098
420	233 099
420	233 100
420	233 101
420	233 102



Check valves for manifold mounting · steel · DN 6 - DN 40



O-Rings included in delivery
 All dimensions subject to change without notice
 Dimensions in mm
 Weight in kg
 Pressure in bar

Body: steel, zinc plated
 O-Rings: FKM

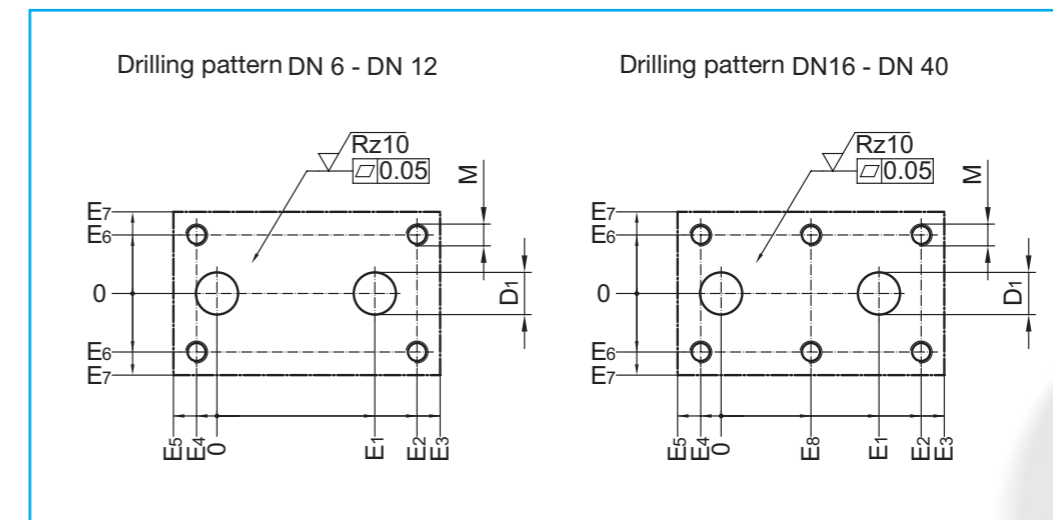
Connection	DN	L1	L2	L3	L4	L5	L6	L7	B	B1	H	H1
Body flange with O-Ring-sealing	6	16,0	8,0	39,0	19,0	6,4	43,0	-	41,5	28,5	16,0	8,0
	8	25,5	11,0	57,0	35,0	6,5	62,0	-	46,0	33,5	20,0	10,0
	10	25,5	13,0	60,0	33,5	9,0	65,0	-	51,0	38,0	25,0	12,5
	12	30,0	15,0	70,0	38,0	11,0	75,0	-	57,5	44,5	32,0	16,0
	16	54,0	21,4	104,0	76,0	10,0	109,0	38,0	70,0	54,0	45,0	22,5
	20	57,0	28,0	120,0	95,0	9,0	127,0	47,5	76,5	60,0	50,0	25,0
	25	79,5	32,6	152,0	120,0	12,0	158,0	60,0	100,0	76,0	55,0	27,5
	30	95,0	36,8	178,0	143,0	13,0	184,0	71,5	115,0	92,0	75,0	37,5
	40	89,0	39,5	170,0	133,5	14,0	178,0	67,0	140,0	111,0	100,0	50,0

DN	D1	D2	D3	D4	T1	T2	Weight	Opening-pressure	For cylinderhead screw DIN EN ISO 4762 (DIN 912)
6	5,0	9,7	6,4	10,5	1,3	6,8	0,2	0,5	M6 - 8.8
8	6,0	12,3	6,4	10,5	1,5	6,8	0,4	0,5	M6 - 8.8
10	8,0	15,7	6,4	10,5	1,5	6,8	0,5	0,5	M6 - 8.8
12	10,0	18,7	6,4	10,5	1,5	6,8	0,9	0,5	M6 - 8.8
16	12,0	23,6	8,4	13,5	1,9	9,0	2,2	0,5	M8 - 8.8
20	19,0	30,5	8,4	13,5	2,2	9,0	3,1	0,5	M8 - 8.8
25	25,0	37,5	10,5	18,0	2,2	11,0	5,2	0,5	M10 - 8.8
30	30,0	43,5	13,0	20,0	2,2	13,0	10,3	0,5	M12 - 8.8
40	40,0	57,5	13,0	20,0	2,2	13,0	15,8	0,5	M12 - 8.8

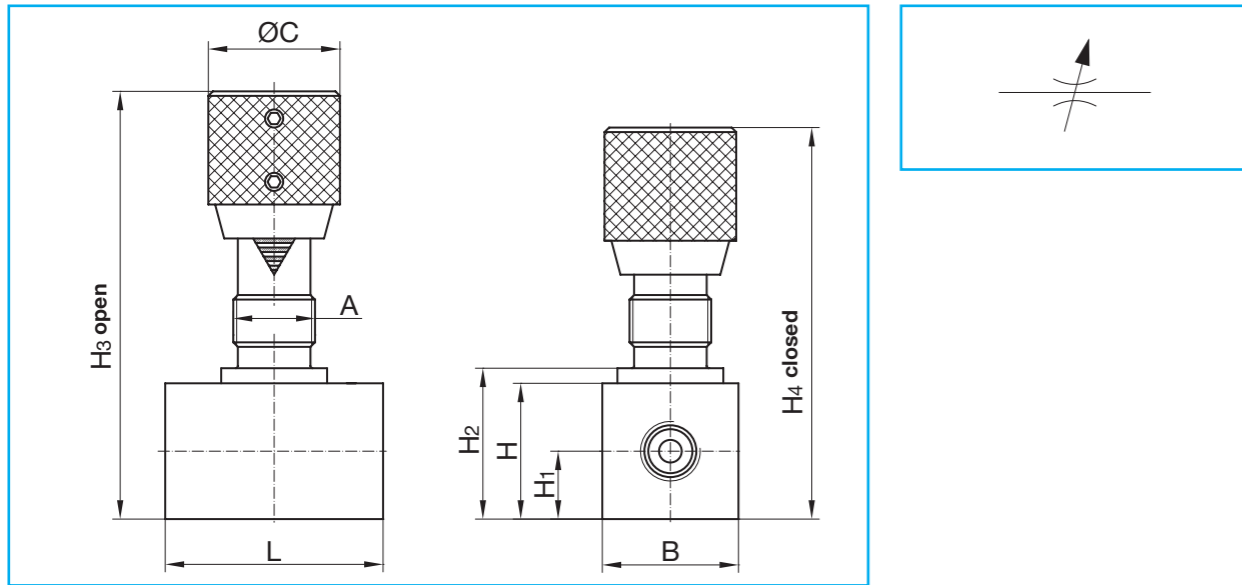
PN	Article-No.
350	233081
350	233082
350	233083
350	233084
350	233085
350	233086
350	233087
350	233088
350	233089

DN	D1	E1	E2	E3	E4	E5	E6	E7	E8	M	O-Ring
6	5,0	16,0	17,4	31,0	1,6	8,0	14,25	20,75	-	M6	6,30 x 1,80
8	6,0	25,5	30,5	46,0	4,5	11,0	16,75	23,00	-	M6	8,50 x 2,00
10	8,0	25,5	29,5	47,0	4,0	13,0	19,00	25,50	-	M6	12,00 x 2,00
12	10,0	30,0	34,0	55,0	4,0	15,0	22,25	28,75	-	M6	15,00 x 2,00
16	12,0	54,0	64,6	82,6	11,4	21,4	27,00	35,00	26,6	M8	19,00 x 2,50
20	19,0	57,0	76,0	92,0	19,0	28,0	30,00	38,25	28,5	M8	25,00 x 3,00
25	25,0	79,5	99,4	119,4	20,6	32,6	38,00	50,00	39,4	M10	32,00 x 3,00
30	30,0	95,0	119,2	141,2	23,8	36,8	46,00	57,50	47,7	M12	38,00 x 3,00
40	40,0	89,0	108,0	130,5	25,5	39,5	55,50	70,00	41,5	M12	52,00 x 3,00

General tolerances
 DIN ISO 2768
 Surfaces
 DIN EN ISO 4287



Needle valves with threaded connector · DN 4 - DN 50



Custom orders on request

All dimensions subject to change without notice

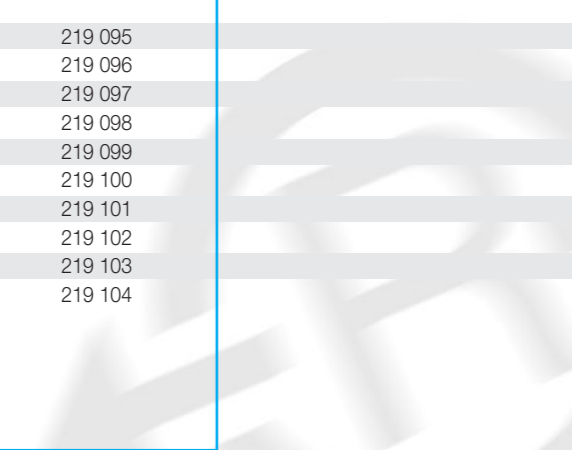
Dimensions in mm

Weight in kg

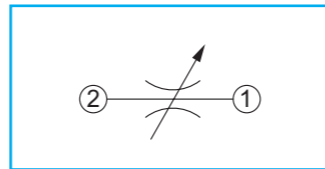
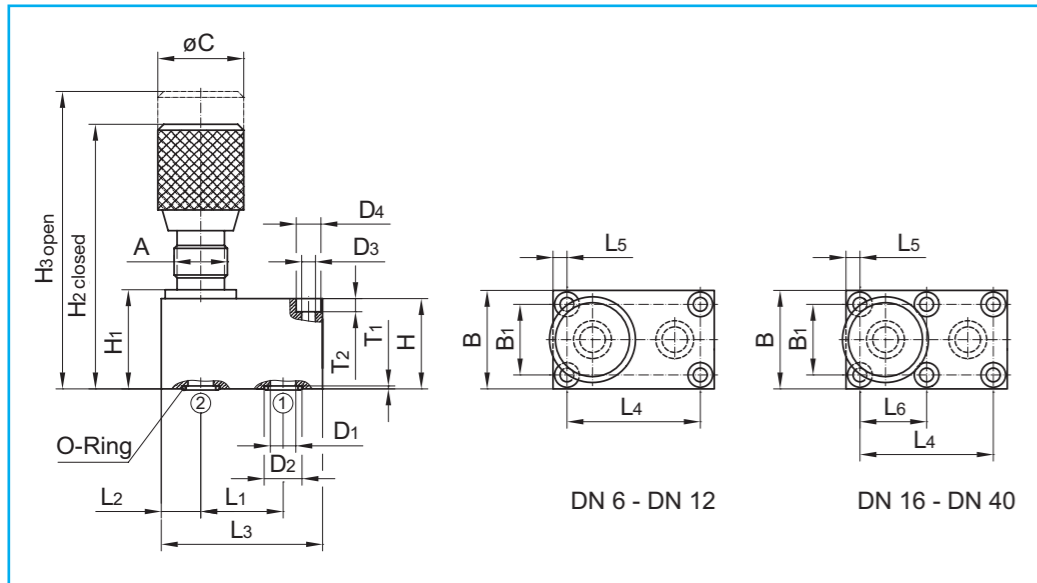
Pressure in bar

Body:	steel, zinc plated	stainless steel
Spindle:	steel	stainless steel
Rotary knob:	aluminium	aluminium
O-Rings:	FKM	FKM

Connection	DN	Thread D	L	L1	A	B	C	H	H1	H2	H3	H4	Weight	DN	PN	Article-No.	PN	Article-No.
BSP-female thread DIN EN ISO 228-1	4	G 1/8	38	10,0	M18x1,5	20	29	20	10,0	23	87	78	0,22	4	350	219 028	350	219 076
	6	G 1/4	48	12,0	M18x1,5	25	29	25	12,5	28	92	83	0,31	6	350	219 029	350	219 077
	10	G 3/8	58	14,0	M18x1,5	30	29	30	15,0	33	98	88	0,47	10	350	219 030	350	219 078
	12	G 1/2	68	15,0	M18x1,5	35	29	35	17,5	38	103	93	0,66	12	350	219 031	350	219 079
	16	G 5/8	78	16,0	M22x1,5	45	38	45	22,5	49	123	111	1,25	16	350	219 058	350	219 080
	20	G 3/4	78	16,0	M22x1,5	45	38	45	22,5	49	123	111	1,25	20	350	219 032	350	219 081
	25	G1	108	20,0	M22x1,5	50	38	50	25,0	54	128	116	1,95	25	350	219 033	350	219 082
	32	G1 1/4	108	20,0	M36x1,5	60	50	60	30,0	66	183	164	3,26	32	350	219 034	350	219 083
	40	G1 1/2	108	23,0	M36x1,5	70	50	70	35,0	76	193	174	4,20	40	350	219 035	350	219 084
	50	G2	130	24,5	M36x1,5	90	50	90	45,0	96	213	194	7,65	50	350	219 036	350	219 085
NPT-female thread ANSI/ASME B1.20.1-1983	4	1/8 - 27 NPT	38	6,9	M18x1,5	20	29	20	10,0	23	87	78	0,22	4	350	219 037	350	219 086
	6	1/4 - 18 NPT	48	10,0	M18x1,5	25	29	25	12,5	28	92	83	0,31	6	350	219 038	350	219 087
	10	3/8 - 18 NPT	58	10,3	M18x1,5	30	29	30	15,0	33	98	88	0,47	10	350	219 039	350	219 088
	12	1/2 - 14 NPT	68	13,6	M18x1,5	35	29	35	17,5	38	103	93	0,66	12	350	219 040	350	219 089
	20	3/4 - 14 NPT	78	14,1	M22x1,5	45	38	45	22,5	49	123	111	1,25	20	350	219 041	350	219 090
	25	1 - 11 1/2 NPT	108	16,8	M22x1,5	50	38	50	25,0	54	128	116	1,95	25	350	219 042	350	219 091
	32	1 1/4 - 11 1/2 NPT	108	17,3	M36x1,5	60	50	60	30,0	66	183	164	3,26	32	350	219 043	350	219 092
	40	1 1/2 - 11 1/2 NPT	108	17,3	M36x1,5	70	50	70	35,0	76	193	174	4,20	40	350	219 044	350	219 093
	50	2 - 11 1/2 NPT	130	17,7	M36x1,5	90	50	90	45,0	96	213	194	7,65	50	350	219 045	350	219 094
	Female thread ISO 11926-1	4	7/16 -20 UNF-2B	42	6,9	M18x1,5	20	29	20	10,0	23	87	78	0,22	4	350	219 047	350
6		1/2 -20 UNF-2B	48	10,0	M18x1,5	25	29	25	12,5	28	92	83	0,31	6	350	219 059	350	219 096
8		9/16 -18 UNF-2B	58	12,7	M18x1,5	30	29	30	15,0	33	98	88	0,47	8	350	219 048	350	219 097
10		3/4 -16 UNF-2B	60	14,3	M18x1,5	30	29	30	15,0	33	98	88	0,47	10	350	219 049	350	219 098
12		7/8 -14 UNF-2B	72	16,7	M18x1,5	35	29	35	17,5	38	103	93	0,66	12	350	219 060	350	219 099
16		1 1/16 -12 UN -2B	84	19,0	M22x1,5	45	38	45	22,5	49	123	111	1,25	16	350	219 050	350	219 100
20		1 5/16 -12 UN -2B	108	19,0	M22x1,5	50	38	50	25,0	54	128	116	1,95	20	350	219 051	350	219 101
25		1 5/8 -12 UN -2B	108	16,8	M22x1,5	60	50	60	30,0	66	183	164	3,26	25	350	219 052	350	219 102
32		1 7/8 -12 UN -2B	108	19,0	M36x1,5	70	50	70	35,0	76	193	174	4,20	32	350	219 053	350	219 103
40		2 1/2 -12 UN -2B	130	19,0	M36x1,5	90	50	90	45,0	96	213	194	7,65	40	350	219 054	350	219 104



Needle valves for manifold mounting · steel · DN 6 - DN 40

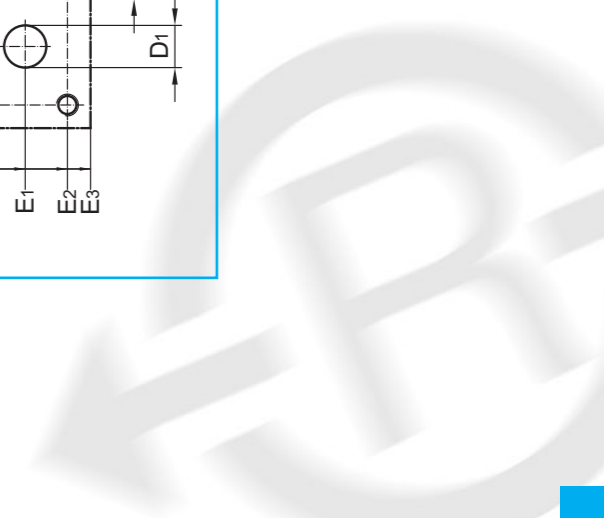
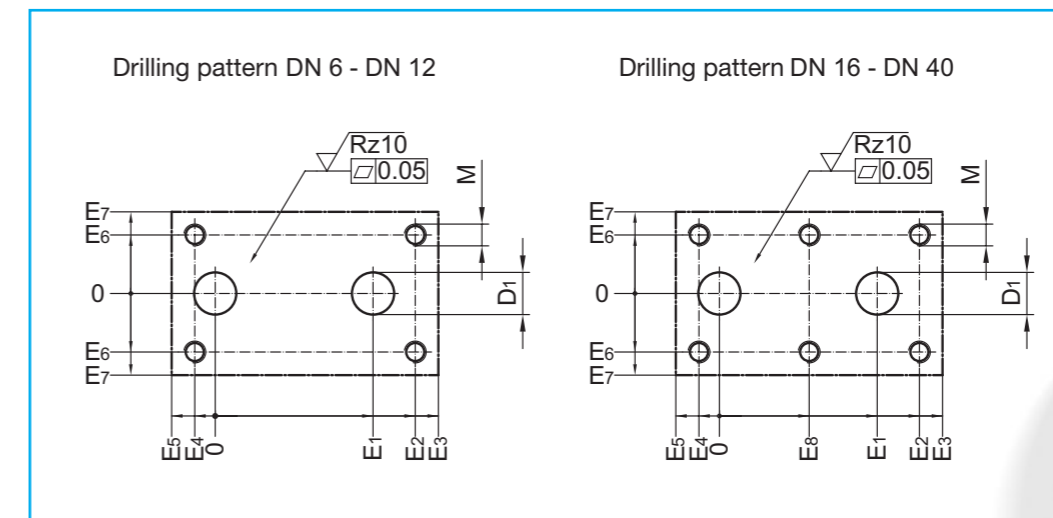


O-Rings included in delivery
 All dimensions subject to change without notice
 Dimensions in mm
 Weight in kg
 Pressure in bar

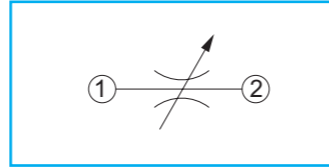
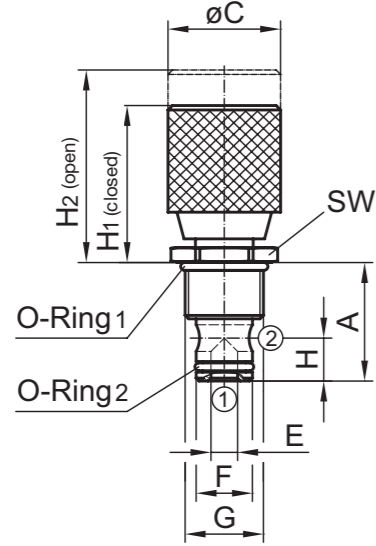
Body: steel, zinc plated
 O-Rings: FKM

Connection	DN	L1	L2	L3	L4	L5	L6	B	B1	øC	H	H1	H2	H3	A	DN	D1	D2	D3	D4	T1	T2	Weight	For cylinderhead screw DIN EN ISO 4762 (DIN 912)		PN	Article-No.
																								M	M		
Body flange with O-Ring-sealing	6	16,0	9,5	35,0	19,0	8,0	-	41,5	28,5	29	16	19	74	84	M18 x 1,5	6	5,0	9,7	6,4	10,5	1,3	6,8	0,2	M6 - 8.8	350	219061	
	8	25,5	11,0	48,0	35,0	6,5	-	46,0	33,5	29	20	23	78	88	M18 x 1,5	8	7,0	12,3	6,4	10,5	1,5	6,8	0,4	M6 - 8.8	350	219062	
	10	25,5	12,7	51,0	33,5	8,5	-	50,0	38,0	29	24	27	82	92	M18 x 1,5	10	10,0	15,7	6,4	10,5	1,5	6,8	0,6	M6 - 8.8	350	219063	
	12	30,0	22,5	75,0	38,0	18,5	-	57,5	44,5	29	25	28	83	93	M18 x 1,5	12	13,0	18,7	6,4	10,5	1,5	6,8	1,0	M6 - 8.8	350	219064	
	16	54,5	19,5	93,5	76,0	8,5	38,0	70,0	54,0	38	30	34	96	108	M22 x 1,5	16	17,0	23,7	8,4	14,0	1,9	9,0	1,6	M8 - 8.8	350	219065	
	20	57,0	27,0	111,0	95,0	8,0	47,5	76,5	60,0	38	45	49	111	123	M22 x 1,5	20	22,0	30,5	8,4	14,0	2,3	9,0	3,5	M8 - 8.8	350	219066	
	25	79,5	32,0	143,0	120,5	11,0	60,0	100,0	76,0	38	45	49	111	123	M22 x 1,5	25	28,5	37,5	10,5	17,0	2,3	11,0	5,2	M10 - 8.8	350	219067	
	30	95,0	37,0	169,0	143,0	13,0	71,5	115,0	92,0	50	50	56	154	173	M36 x 1,5	30	35,0	43,5	13,0	20,0	2,3	13,0	7,5	M12 - 8.8	350	219068	
	40	89,0	39,5	163,0	133,5	14,0	67,0	140,0	111,0	50	50	56	154	173	M36 x 1,5	40	47,5	57,5	13,0	20,0	2,3	13,0	7,0	M12 - 8.8	350	219069	

General tolerances DIN ISO 2768 Surfaces DIN EN ISO 4287	DN	D1	E1	E2	E3	E4	E5	E6	E7	E8	M	O-Ring
	6	5,0	16,0	17,5	25,5	1,5	9,5	14,25	20,75	-	M6	6,30 x 1,80
	8	7,0	25,5	30,5	37,0	4,5	11,0	16,75	23,00	-	M6	8,50 x 2,00
	10	10,0	25,5	29,3	38,3	4,2	12,7	19,00	25,00	-	M6	12,00 x 2,00
	12	13,0	30,0	34,0	52,5	4,0	22,5	22,25	28,75	-	M6	15,00 x 2,00
	16	17,0	54,5	65,0	74,0	11,0	19,5	27,00	35,00	27,0	M8	19,00 x 2,50
	20	22,0	57,0	76,0	84,0	19,0	27,0	30,00	38,25	28,5	M8	25,00 x 3,00
	25	28,5	79,5	99,5	111,0	21,0	32,0	38,00	50,00	39,0	M10	32,00 x 3,00
	30	35,0	95,0	119,0	132,0	24,0	37,0	46,00	57,50	47,5	M12	38,00 x 3,00
	40	47,5	89,0	108,0	123,5	25,5	39,5	55,50	70,00	41,5	M12	52,00 x 3,00



Needle valves for manifold insertion as cartridge type · steel · DN 8 - DN 16



O-Rings included in delivery
 All dimensions subject to change without notice
 Dimensions in mm
 Weight in kg
 Pressure in bar

Body: steel, zinc plated
 O-Rings: FKM

Connection	DN	A	C	E	F	G	H	H ₁	H ₂	SW
Screw-in threaded DIN EN ISO 228-1	8	28	29	5	14	G $\frac{1}{2}$ A	12,0	45	55	27
	10	31	29	6	16	G $\frac{1}{2}$ A	14,5	44	53	27
	12	40	38	8	19	G $\frac{3}{4}$ A	17,5	53	64	32
	16	44	38	8	27	G1 A	21,1	52	63	41

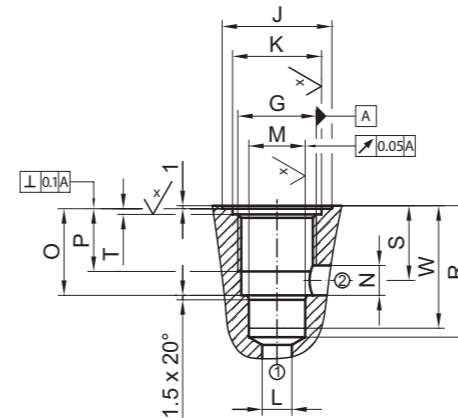
DN	O-Ring 1	O-Ring 2	Assembly torque [Nm]	Weight
8	18,72 x 2,62	11,10 x 1,78	30 ⁺⁵	0,2
10	18,72 x 2,62	13,29 x 1,78	40 ⁺⁵	0,3
12	23,47 x 2,62	13,94 x 2,62	50 ⁺⁵	0,5
16	29,82 x 2,62	21,89 x 2,62	75 ⁺⁵	0,7

PN	Article-No.
350	219071
350	219072
350	219073
350	219074

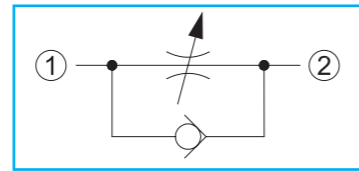
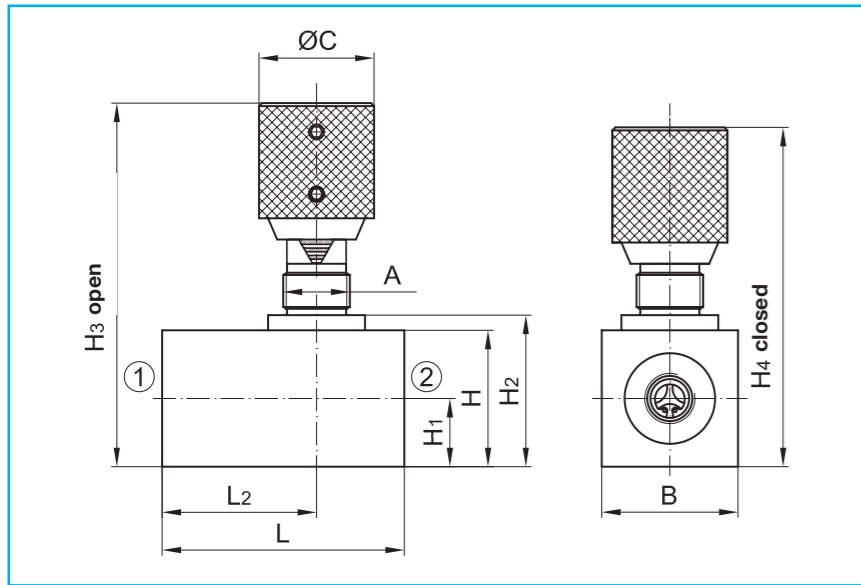
DN	G	J	K +0.1	L max.	M H ₈	N max.	O	P min.	R +1	S	T +0.1	W min.
8	G $\frac{1}{2}$	32	24	5	14	5	17,5	14	29	15	1,9	28
10	G $\frac{1}{2}$	32	24	8	16	8	20,5	14	33	17	1,9	32
12	G $\frac{3}{4}$	37	30	10	19	11	29,0	21	43	24	1,9	41
16	G1	47	36	12	27	12	30,0	21	47	24	1,9	45

General tolerances
 DIN ISO 2768
 Surfaces
 DIN EN ISO 4287

Drilling pattern DN 8 - DN 16

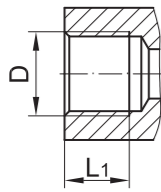
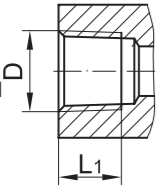
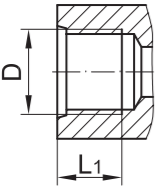


Flow control valves with threaded connector · DN 4 - DN 50

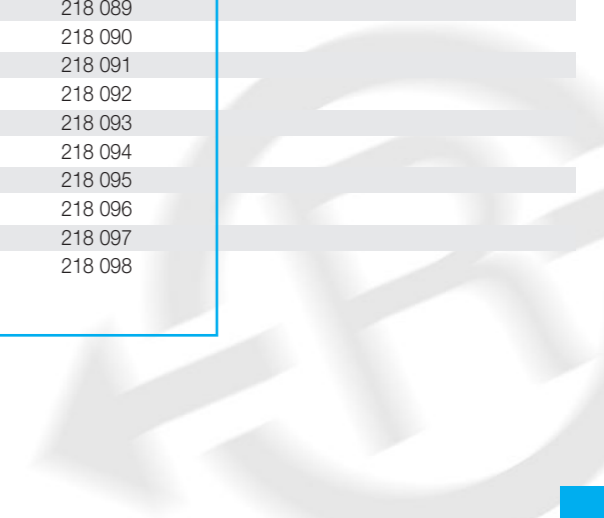


Opening pressure: 0,5
 Custom orders on request
 All dimensions subject to change without notice
 Dimensions in mm
 Weight in kg
 Pressure in bar

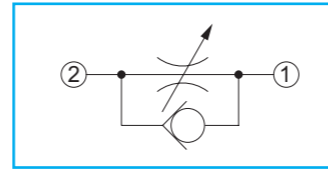
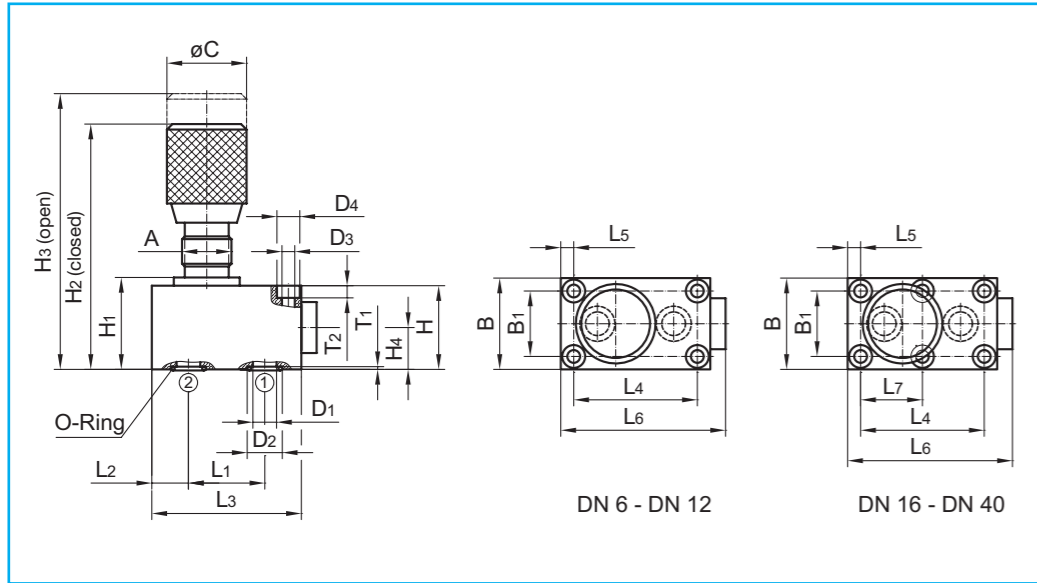
Body:	steel, zinc plated	stainless steel
Spindle:	steel	stainless steel
Rotary knob:	aluminium	aluminium
O-Rings:	FKM	FKM

Connection	DN Thread D	L	L1	L2	A	B	C	H	H1	H2	H3	H4	Weight	DN
BSP-female thread DIN EN ISO 228-1 	4 G 1/8	45	10,0	28	M18x1,5	20	29	20	10,0	23	87	78	0,25	4
	6 G 1/4	55	12,0	35	M18x1,5	25	29	25	12,5	28	92	83	0,36	6
	10 G 3/8	65	14,0	41	M18x1,5	30	29	30	15,0	33	98	88	0,52	10
	12 G 1/2	73	15,0	48	M18x1,5	35	29	35	17,5	38	103	93	0,68	12
	20 G 3/4	88	16,0	57	M22x1,5	45	38	45	22,5	49	123	111	1,37	20
	25 G1	127	20,0	77	M22x1,5	50	38	50	25,0	54	128	116	2,17	25
	32 G1 1/4	143	20,0	93	M36x1,5	60	50	60	30,0	66	183	164	3,96	32
40 G1 1/2	143	23,0	98	M36x1,5	70	50	70	35,0	76	193	174	5,03	40	
50 G2	165	24,5	111	M36x1,5	90	50	90	45,0	96	213	194	9,10	50	
NPT-female thread ANSI/ASME B1.20.1-1983 	4 1/8-27 NPT	45	6,9	28	M18x1,5	20	29	20	10,0	23	87	78	0,25	4
	6 1/4-18 NPT	55	10,0	35	M18x1,5	25	29	25	12,5	28	92	83	0,36	6
	10 3/8-18 NPT	65	10,3	41	M18x1,5	30	29	30	15,0	33	98	88	0,52	10
	12 1/2-14 NPT	73	13,6	48	M18x1,5	35	29	35	17,5	38	103	93	0,68	12
	20 3/4-14 NPT	88	14,1	57	M22x1,5	45	38	45	22,5	49	123	111	1,37	20
	25 1 - 11 1/2 NPT	127	16,8	77	M22x1,5	50	38	50	25,0	54	128	116	2,17	25
	32 1 1/4 - 11 1/2 NPT	143	17,3	93	M36x1,5	60	50	60	30,0	66	183	164	3,86	32
40 1 1/2 - 11 1/2 NPT	143	17,3	98	M36x1,5	70	50	70	35,0	76	193	174	5,03	40	
50 2 - 11 1/2 NPT	165	17,7	111	M36x1,5	90	50	90	45,0	96	213	194	9,10	50	
Female thread ISO 11926-1 	4 7/16-20 UNF-2B	49	11,5	28,0	M18x1,5	20	29	20	10,0	23	87	78	0,25	4
	6 1/2 -20 UNF-2B	55	11,5	33,5	M18x1,5	25	29	25	12,5	28	92	83	0,38	6
	8 9/16-18 UNF-2B	67	12,7	42,0	M18x1,5	30	29	30	15,0	33	98	88	0,52	8
	10 3/4 -16 UNF-2B	67	14,3	42,0	M18x1,5	30	29	30	15,0	33	98	88	0,52	10
	12 7/8 -14 UNF-2B	77	16,7	50,0	M18x1,5	35	29	35	17,5	38	103	93	0,68	12
	16 1 1/16 -12 UN -2B	94	19,0	60,0	M22x1,5	45	38	45	22,5	49	123	111	1,37	16
	20 1 5/16 -12 UN -2B	127	19,0	77,0	M22x1,5	50	38	50	25,0	54	128	116	2,17	20
	25 1 5/8 -12 UN -2B	143	19,0	93,0	M22x1,5	60	50	60	30,0	66	183	164	3,96	25
	32 1 7/8 -12 UN -2B	143	19,0	98,0	M36x1,5	70	50	70	35,0	76	193	174	5,03	32
	40 2 1/2 -12 UN -2B	165	19,0	111,0	M36x1,5	90	50	90	45,0	96	213	194	9,10	40

DN	PN	Article-No.	PN	Article-No.
4	350	218 028	350	218 071
6	350	218 029	350	218 072
10	350	218 030	350	218 073
12	350	218 031	350	218 074
20	350	218 032	350	218 075
25	350	218 033	350	218 076
32	350	218 034	350	218 077
40	350	218 035	350	218 078
50	350	218 036	350	218 079
4	350	218 037	350	218 080
6	350	218 038	350	218 081
10	350	218 039	350	218 082
12	350	218 040	350	218 083
20	350	218 041	350	218 084
25	350	218 042	350	218 085
32	350	218 043	350	218 086
40	350	218 044	350	218 087
50	350	218 045	350	218 088
4	350	218 047	350	218 089
6	350	218 057	350	218 090
8	350	218 048	350	218 091
10	350	218 049	350	218 092
12	350	218 058	350	218 093
16	350	218 050	350	218 094
20	350	218 051	350	218 095
25	350	218 052	350	218 096
32	350	218 053	350	218 097
40	350	218 054	350	218 098



Flow control valves for manifold mounting · steel · DN 6 - DN 40



O-Rings included in delivery
 Opening pressure: 0,5
 All dimensions subject to change without notice
 Dimensions in mm
 Weight in kg
 Pressure in bar

Body: steel, zinc plated
 O-Rings: FKM

Connection	DN	L1	L2	L3	L4	L5	L6	L7	B	B1	øC	H	H1	H2	H3	H4	A	DN	D1	D2	D3	D4	T1	T2	Weight	For cylinderhead screw DIN EN ISO 4762 (DIN 912)		PN	Article-No.
																										M	M		
Body flange with O-Ring-sealing	6	16,0	8,0	41,5	19,0	6,4	41,5	-	41,5	28,5	29	16	19	74	84	8,0	M18 x 1,5	6	5,0	9,7	6,5	10,5	1,3	6,8	0,3	M6 - 8.8	350	218061	
	8	25,5	18,7	63,5	35,0	14,2	68,5	-	46,0	33,5	29	20	23	78	87	10,0	M18 x 1,5	8	7,0	12,3	6,5	10,5	1,5	6,8	0,5	M6 - 8.8	350	218062	
	10	25,5	22,0	70,0	33,5	18,0	75,0	-	51,0	38,0	29	25	28	83	93	12,5	M18 x 1,5	10	10,0	15,7	6,5	10,5	1,5	6,8	0,8	M6 - 8.8	350	218063	
	12	30,0	25,0	80,0	38,0	21,0	85,0	-	57,5	44,5	29	32	35	90	100	16,0	M18 x 1,5	12	13,0	18,7	6,5	10,5	1,5	6,8	1,2	M6 - 8.8	350	218064	
	16	54,0	21,4	104,0	76,0	10,0	111,0	38,0	70,0	54,0	38	45	49	111	123	22,5	M22 x 1,5	16	17,0	23,7	8,4	14,0	2,0	9,0	2,5	M8 - 8.8	350	218065	
	20	57,0	35,0	127,0	95,0	16,0	133,0	47,5	80,0	60,0	38	49	53	115	127	24,5	M22 x 1,5	20	22,0	30,5	8,4	14,0	2,3	9,0	4,0	M8 - 8.8	350	218066	
	25	79,5	35,6	165,0	120,0	15,0	165,0	60,0	100,0	76,0	38	55	59	121	133	27,5	M22 x 1,5	25	28,5	37,5	10,5	17,0	2,3	11,0	6,7	M10 - 8.8	350	218067	
	30	95,0	38,8	186,0	143,0	15,0	192,0	71,5	120,0	92,0	50	75	81	179	198	37,5	M36 x 1,5	30	35,0	43,5	13,0	19,0	2,3	13,0	11,5	M12 - 8.8	350	218068	
	40	89,0	39,5	170,0	133,5	14,0	178,0	67,0	140,0	111,0	50	100	106	204	223	50,0	M36 x 1,5	40	40,0	57,5	13,0	20,0	2,3	13,0	16,5	M12 - 8.8	350	218069	

General tolerances DIN ISO 2768 Surfaces DIN EN ISO 4287	DN	D1	E1	E2	E3	E4	E5	E6	E7	E8	M	O-Ring
	6	5,0	16,0	17,4	33,5	1,6	8,0	14,25	20,75	-	M6	6,30 x 1,80
	8	7,0	25,5	30,5	44,8	4,5	18,7	16,75	23,00	-	M6	8,50 x 2,00
	10	10,0	25,5	29,5	48,0	4,0	22,0	19,00	25,50	-	M6	12,00 x 2,00
	12	13,0	30,0	34,0	55,0	4,0	25,0	22,25	28,75	-	M6	15,00 x 2,00
	16	17,0	54,0	64,6	82,6	11,4	21,4	27,00	35,00	26,6	M8	19,00 x 2,50
	20	22,0	57,0	76,0	92,0	19,0	35,0	30,00	40,00	28,5	M8	25,00 x 3,00
	25	28,5	79,5	99,4	129,4	20,6	35,6	38,00	50,00	39,4	M10	32,00 x 3,00
	30	35,0	95,0	119,2	147,2	23,8	38,8	46,00	60,00	47,7	M12	38,00 x 3,00
	40	40,0	89,0	108,0	130,5	25,5	39,5	55,50	70,00	41,5	M12	52,00 x 3,00

