

PRODUCT SERIES SPECIFICATIONS

Series:
Category:
Pressure:
Temperature: - (-)
Material Compliance
Reach:
RoHS:

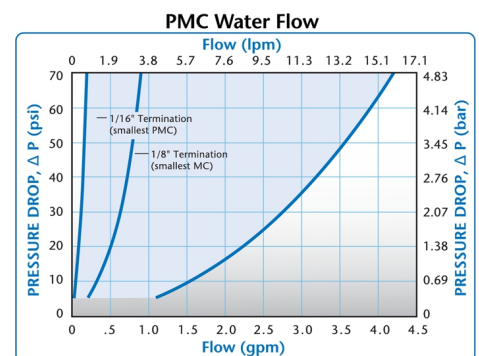
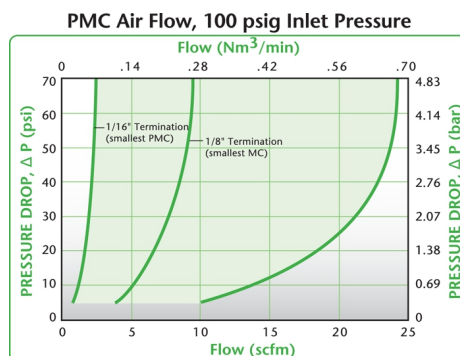
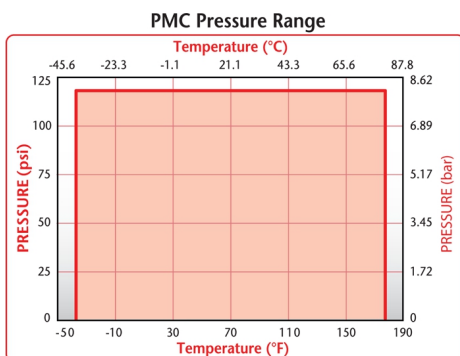
For more information see cpcworldwide.com or contact us at cpcworldwide.com/ContactUs

Interactive 3D graphic, click to activate and rotate.

The 1/8" flow PMC coupling covers a wide variety of general-purpose applications. Featuring the CPC thumb latch, the PMC is easier to use than ball-and-sleeve designs. One-hand connection/disconnection and integral terminations make the PMC the choice for ease of use and manufacture. This coupling is NuSeal® compatible.

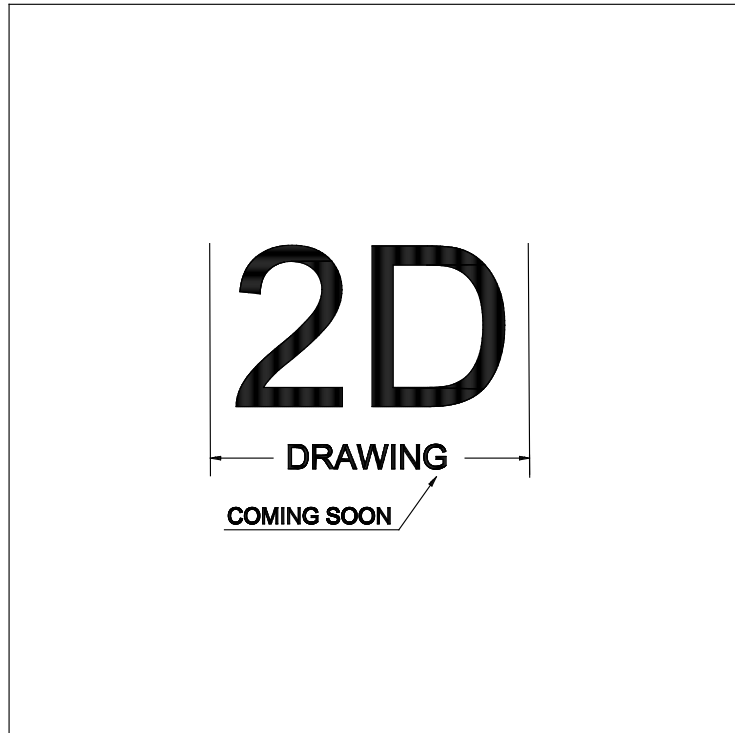
Features - Benefits

Hose barb shroud - Extra protection for the 1/16" hose barb
 Integral terminations - Fewer leak points, shorter assemblies, faster installations
 Compatible - Mates with PMC12 and MC Series couplings
 Clicks when connected - Assurance of a reliable connection



These graphs are intended to give you a general idea of the performance capabilities of each product line. Contact CPC for flow of a particular coupling combination.

Technical details:



Description:

Materials:

Main Components:

Seals:

Valve:

Valve Spring:

Standard Packaging Quantity: